

# Services Directory

INFORMATION FOR STAFF  
WORKING WITH CHILDREN  
AND YOUNG PEOPLE

2008

## INTEGRATING SERVICES FOR WEST LOTHIANS CHILDREN



WEST LOTHIAN CHILDREN'S SERVICES MANAGEMENT GROUP

# Index

Introduction .....	5
How to Use the Directory .....	6
<b>Alphabetical List of Children’s Services</b>	
Access 2 Employment.....	7
Adult Basic Education .....	7
Advice Shop .....	8
Barnardo’s Hazel Grove.....	9
Barnardo’s Lighthouse .....	9
Barnardo’s Skylight Project .....	10
Barnardo’s West Lothian Family Support Team.....	10
Bethany Christian Trust.....	11
Blackburn Family Centre .....	11
B.L.E.S. ....	12
Broxburn Family & Community Development Centre .....	12
Carers of West Lothian .....	14
Childcare Information Service .....	14
Child Disability Service.....	15
Children & Families Resource Team .....	16
Children & Families Social Policy.....	17
Child Protection .....	20
Children & Young People Teams.....	20
Circle West Lothian .....	20
Citizens Advice Bureau (West Lothian) .....	21
COZ (Chill Out Zone).....	22
Couple Counselling Lothian.....	23

Criminal Justice.....	23
Croftmalloch Young People’s Centre.....	24
Cruise Bereavement Care (West Lothian) .....	24
Domestic Abuse Service.....	25
Early Years Outreach Service .....	26
Edinburgh & Lothian Council on Alcohol .....	26
Education and Cultural Services.....	27
- Community Learning and Development.....	27
- Education Development and Quality Assurance .....	31
- Education Establishments .....	32
- Education Support Services.....	43
Family Mediation Lothian .....	44
Family Protection Unit .....	45
First Steps Playgroup.....	46
Homeaid West Lothian.....	46
Home-Start West Lothian.....	47
Includem Hopetoun Street Hostel .....	48
Kiln House .....	48
Letham Young People’s Centre .....	49
Livingston Family Centre.....	49
Looked After Children Team.....	50
Lothian Autistic Society.....	50
NCH Scotland.....	51
NHS Lothian - West Lothian CHCP.....	52
Open Door Accommodation Project.....	58
Residential Schools and Specialist Services .....	59
Reviewing Officers Team.....	65

Save The Children.....	65
Scottish Adoption Association .....	66
Scottish Children’s Reporter Administration .....	66
Scottish Childminding Association (SCMA) .....	67
Scottish Pre-school Playgroup Association.....	68
Sign Post .....	69
Social Care Emergency Team (SCET).....	69
St. Andrew’s Children’s Society .....	70
Sure Start.....	71
Throughcare-Aftercare Team.....	72
Victim Support West Lothian.....	73
Voluntary Action West Lothian .....	74
Voluntary Sector Overview.....	74
West Lothian CHCP.....	76
West Lothian Drug & Alcohol Service.....	77
West Lothian Women’s Aid .....	78
West Lothian Youth Action Project .....	79
Whitdale Family Centre .....	80
Whitrigg House .....	80
Who Cares? Scotland.....	81
Wraparound Care .....	81
Youth Justice Family Support .....	82
YWCA Livingston .....	82



# Introduction

'For Scotland's Children' (October 2001) described the lives of children across Scotland and urged better integrated working among services. The main areas for improvement in the report were listening to young people, easier access to services and working and learning together. The multi-agency West Lothian's Children's Services Management Group (CSMG) is keen to promote more joint working, more co-location of services and more training together on areas of common interest.

In West Lothian, the Integrated Children's Services Plan outlines how we aim to improve services for children, young people and their families. The plan covers all services for all children in West Lothian and has been jointly prepared following consultation with young people and their families, representation from various groups and parents and a wide range of people working in children's services including local authority, health, police, Reporter's Administration and voluntary services.

As a new member of staff in children's services in West Lothian, no matter what type of organisation you work for or service you provide, your help is needed in making sure the plan becomes a reality.

You can do this by joining all our existing staff in working in partnership to deliver best quality services for children, young people and their families. To help you, this pack has been prepared to inform you about all the relevant services and how to contact them, should you need to get advice or information or make a referral.



# How to use the pack

The pack has been prepared from information provided by services. The pack lists each service alphabetically, giving a brief summary of contact details and the role and structure of the service. Where appropriate, this is followed by a list of other locations for the service, for example health centres, educational establishments etc.

For general information on services in West Lothian visit [www.wlonline.org](http://www.wlonline.org)

# Acknowledgements

Thanks to all services for their contributions to the pack.



# Alphabetical list of children's services

## **access2employment**

The Enterprise Centre, Almondvale Boulevard  
Livingston EH54 6QP  
01506 777944  
[sandra.darling@westlothian.gov.uk](mailto:sandra.darling@westlothian.gov.uk)  
[www.westlothian.com](http://www.westlothian.com)

Free and confidential service providing access to:

- skilled employment advisers
- help with producing a CV
- job search resources and vacancies
- help in finding and funding childcare (if eligible)
- available training in West Lothian
- funding to help people move into work (if eligible)
- financial advice and benefits

Advisers are available throughout West Lothian  
– call for an appointment.

**FREEPHONE: 0800 032 9768**

## **Adult Basic Education**

Adult Learning Centre, 6-10 Glasgow Road  
Bathgate EH48 2AA  
01506 776333  
[janice.davidson@westlothian.gov.uk](mailto:janice.davidson@westlothian.gov.uk)  
[www.abeonline.org.uk](http://www.abeonline.org.uk)

### **Summary**

We're here to help anyone over the age of 16 who wishes to improve their literacy or numeracy skills. We would also like to help anyone who is experiencing a hearing loss and wishes to learn lip-reading skills. We are keen to provide training to organisations to help raise awareness of literacy issues and to help spot and refer potential students. We operate throughout the whole of West Lothian and can be contacted on

**FREEPHONE: 0800 731 1831**

### **Service Structure**

Our service is part of Education & Cultural Services – Community Learning and Development.

## **Advice Shop**

Units 9-12 Waverley Industrial Estate  
Waverley Street, Bathgate EH48 4HY  
01506 776444  
advice.shop@westlothian.gov.uk

### **Advice Shop**

*Welfare Strategy Manager*  
Alan Cunningham      01506 776455

The Advice Shop tackles poverty, social exclusion and disadvantage by helping people through income maximisation, debt counselling, employment advice and assisting with housing and fuel poverty.

### **Community Advice Team**

*Campaign Development Officers:*  
Rosie Bunce              01506 776230  
Melanie Bunce          01506 776228  
Saima Akhtar            01506 776229  
Julia Bain                01506 776278

The Community Advice Team works with people at risk of financial exclusion, including:

- families with children
- severely ill people
- housing association tenants

The team works in partnership with St. John's Hospital.

### **Energy Advice**

*Energy Adviser*              John Scott      01506 776442

Advising all residents of West Lothian how to save money on gas and electricity and assisting clients with any energy problems.

### **Money Advice**

*Senior Money Adviser*      Andrew Binnie   01506 775131

Offering a proactive approach, ensuring clients receive the best advice in respect of any debt issues from bank charges to bankruptcy.

### **Not in Employment, Education or Training (NEET)**

*Campaign Development Officer*   Scott Mackay   01506 776232

NEET is for all 16-21 year-olds who are not in employment or training. Services include:

- referrals from other agencies
- assessments on capabilities
- CV production
- employment / education / training search to meet client needs
- assistance with benefits advice

### **Employment 22 Years Plus**

*Employment Adviser* Yvonne Carson 01506 776231

We attempt to find employment for clients and work in conjunction with access 2 employment and Careers Scotland.

- referrals from other agencies
- assessments on capabilities
- CV production
- employment search
- assistance with job applications
- assistance with benefits advice

### **Barnardo's Hazel Grove**

6-8 Hazel Grove, Livingston EH54 5JW

01506 438666

[hazelgrove@barnardos.org.uk](mailto:hazelgrove@barnardos.org.uk)

Work with children aged 12 years and under and their families.

- Assessment
- Group work
- Individual and family work
- Volunteers

The service operates throughout West Lothian, primarily working with referrals from social workers.

### **Barnardo's Lighthouse**

Suite Two, Stanhope House, 12 Stanhope Place,  
Edinburgh EH12 5HH

0131 346 4683

Fax: 0131 346 7993

[lighthouse@barnardos.org.uk](mailto:lighthouse@barnardos.org.uk)

Lighthouse provides a specialist service for children and young people whose sexual behaviour is harmful to others. Services include assessment, family work, consultation and training. Referrals to the service in West Lothian are made through the Social Policy Resources Group.

## **Barnardo's Skylight Project**

27 Ocean Drive, Edinburgh EH6 6JL

0131 561 1464

skylight@barnardos.org.uk

www.barnardos.org.uk/skylight

Skylight offers individual therapeutic work, usually weekly, to young people aged up to 18 years old who have been sexually abused. We use a range of therapeutic approaches to enable young people to explore and understand the thoughts, feelings and behaviours that may have arisen and for them to try and make sense of their experiences. All the staff have different approaches and training but all work in a non directive way.

Different approaches include art therapy, child psychotherapy, counselling and Gestalt therapy. We aim to match the child or young person, following assessment, with the worker whose approach will best suit their needs.

Skylight also delivers parent support to non-abusing parents as well as a consultancy service to the professional network.

We run Carers courses for foster carers in West Lothian at present and can provide a range of training programmes, individually tailored to need, on request (subject to funding)

## **Barnardo's West Lothian Family Support Team**

Melbourne House, 94 Mid Street,

Bathgate EH48 1QF

01506 656325

wlfst.project@barnardos.org.uk

Working in partnership with West Lothian Council to provide disability, family and short break support services to children and young people, from birth to school leaving age, who have significant learning disabilities (including complex health needs) and their families.

### **Services provided:**

- advice to families who have a child\young person with a disability
- holiday activity programmes for children and young people - Beatlie Campus for children with complex disabilities and medical needs, and Melbourne House for children with significant learning disabilities.
- Short Break Service – Home Sitting and Activity Breaks
- Group Work
- intensive family support in conjunction with the Child Disability Service, including assessments

### **Service Structure**

Children's Services Manager, Isobel Denholm, is based in Melbourne House and Assistant Director Children Services, Peter Flanagan, is based in Barnardo's Dundee Office.

## **Bethany Christian Trust**

Bethany Hall (Registered Office)  
18 Jane Street, Edinburgh EH6 5HD  
Tel: 0131 467 3030 Fax: 0131 625 5300  
info@bethanyct.com

### **Summary**

Bethany Christian Trust is a registered charity providing residential accommodation and support services for homeless men and women.

Our accommodation in West Lothian:

#### **Martha House**

*Women's Supported Community*  
West Calder  
T: 01506 870040  
marthahouse@bethanychristiantrust.com

#### **Matthew House**

*Men's Emergency Resettlement*  
2 Bethany Home Farm  
North Greendykes Road  
Broxburn EH52 6PN  
T: 01506 507025  
matthewhouse@bethanychristiantrust.com

Both units provide accommodation for four people. Matthew House is scheduled for closure in 2008 and will be replaced by a new unit in Bathgate.

### **Service Structure**

Residential Support Services Director: John Rogers  
Matthew House Manager: Norrie Webb  
Martha House Manager: Glenn Rogers

## **Blackburn Family Centre**

1a Whitehill Road, Blackburn EH47 7HH  
01506 633438

Blackburn Family Centre aims to provide opportunities for children to socialise in a safe, educational environment. It provides mutual support and self-help amongst parents, enabling both parent and child the chance of further education.

Our goals are to enable parents to address issues relating to improvements in family health and the local community. We ensure that families on low, fixed incomes have access to our resources.

## **Blackburn Local Employment Scheme (BLES Training)**

6A/B Whitestone Place, Whitehill Industrial Estate  
Blackburn EH48 2EW  
01506 634010  
[bles.training@virgin.net](mailto:bles.training@virgin.net)

### **Summary**

If you have just left school or are out of work, BLES offers "A Get Ready For Work" programme and offers skills in many areas of work. BLES offers a structured programme of training taking into account your abilities, aptitude and interests and provides work placements, which could lead to employment. Training is offered in skills of: woodwork, general building, painting and decorating, administration and many other trades/jobs. (tell us what you want to do )

Mon–Thurs	08.30am – 4.30pm
Friday	08.30am – 3.30pm

### **Eligibility**

Anyone aged 16 - 17 years who is out of work and wants to learn new skills in order to find a permanent job.

Local businesses and individuals can contact BLES to have painting and decorating or joinery work done. Project estimates are given free with special rates for OAP's, unemployed and disabled. Trainees are supervised by qualified tradesmen.

## **Broxburn Family and Community Development Centre**

1-3 Henderson Place, Broxburn EH52 6EY  
01506 857158  
[simon@broxburnfamilycentre.org](mailto:simon@broxburnfamilycentre.org)  
[www.broxburnfamilycentre.org](http://www.broxburnfamilycentre.org)

Broxburn Family Centre offers a wide range of social & educational opportunities in an informal & positive environment. Adults and children of all ages and abilities are welcome.

With a focus on information technology, health promotion and the arts we constantly have exciting and innovative new activities. The Family Centre continually develops to meet the changing needs and interests of the community.

Broxburn Family Centre is an independent voluntary organisation recognised as a charity. We offer a wide range of services for both adults and children of all ages. These are detailed below:

- **Adult Classes:** We have a wide variety of classes ranging from First Aid to Coffee & Crafts. For more up to date info contact Simon Henderson or visit [www.broxburnfamilycentre.org/adult](http://www.broxburnfamilycentre.org/adult)

- **Adult Basic Education:** We also offer a supportive learning environment for those wishing to improve their literacy and numeracy skills. This is a 1 to 1 service and fully confidential.
- A **computer suite** with internet access - computer classes and short courses are available.
- **Playwork training.** We currently offer an SVQ in Playwork Level 3. We can also offer practical training session in play related subjects and HSE approved First Aid. Contact Amanda Godsell.
- **The Range Adventure Playground** provides a variety of clubs and activities for children and young people aged 5-15 all year round. For more up to date info contact Simon Henderson or visit [www.broxburnfamilycentre.org/range](http://www.broxburnfamilycentre.org/range)
- A **crèche** for pre-school children.
- Our **Café** is open Monday - Thursday 9.00 - 1.30pm.
- **An Out of School Care Service** for parent or carers in work or education. This service collects children from the 4 local primary schools in Broxburn. It is available after school in term time and all day during school holidays. For more info contact Nathan MacGillivray or visit [www.broxburnfamilycentre.org/oosc](http://www.broxburnfamilycentre.org/oosc)

#### Contact Details:

Simon Henderson - 01506 857158  
[simon@broxburnfamilycentre.org](mailto:simon@broxburnfamilycentre.org) Tel:

Amanda Godsell - 01506 857581  
[amanda@broxburnfamilycentre.org](mailto:amanda@broxburnfamilycentre.org) Tel:

Nathan MacGillivray - 01506 857158  
[oosc@broxburnfamilycentre.org](mailto:oosc@broxburnfamilycentre.org) Tel:

## **Carers of West Lothian**

Strathbrock Partnership Centre  
189a West Main Street, Broxburn EH52 5LH  
01506 771750  
office@carers-westlothian.com  
www.carers-westlothian.com

Provide support, information, advice, and listening ear for carers of all ages across West Lothian. We produce an information pack giving information on support services, benefits and useful contact details for Carers in West Lothian. We also offer a directory of respite services in the area, detailing breaks available to carers in West Lothian. The organisation offers free training courses for carers and facilitates a Carers' Voice Group whose members lobby on behalf of carers locally and nationally. We publish a quarterly newsletter.

Carers Centre Manager, Mary-Denise McKernan, is responsible to the Management Committee. Centre Manager manages a core staff team based within the Carers Centre in Strathbrock. Also manages an Outreach Project based within the Carers Centre, and a Young Carers Partnership Project based in the Children and Young People Teams' office in Bathgate.

### **Other Offices / Locations:**

Young Carers Partnership Project  
25 North Bridge Street, BATHGATE EH48 4PJ  
01506 776999  
wilma.philpot@westlothian.gov.uk

## **Childcare Information Service**

Lindsay House, South Bridge Street  
Bathgate, EH48 1TS  
01506 776660  
chis@westlothian.gov.uk

To provide information and details on all types of registered childcare in the area. Further information is available from the above number and email address.

The service is managed by an Education Officer based in Lindsay House who is responsible for the development of the service and the service is run by an Administrator.

## **Child Disability Service**

2<sup>nd</sup> Floor, Lomond House, Beveridge Square

Livingston EH54 6QF

01506 773789 Fax: 01506 773790

firstname.lastname@westlothian.gov.uk

Manager: Linda Sanders

### **Summary**

The Child Disability Service (CDS) was established to ensure social work services are made available to disabled children and their families in West Lothian. The team strives to promote social inclusion and to maximise the potential of individual children with an emphasis on providing, as far as possible, services in local communities.

The CDS supports children and young people between birth and 16 years who live in West Lothian and have a significant or complex disability and where the child's disability is the main issue for seeking support. This includes:

- learning disability
- physical disability
- motor impairment
- hearing impairment
- visual impairment
- language and communication disorder
- autism spectrum disorder

In addition to providing services directly related to the impact of disability, the CDS is also engaged in delivering statutory services.

### **Service Structure**

The service is part of Social Policy and is line managed by Jo MacPherson, Group Manager (Fieldwork Services)

## **Children & Families Resource Team**

1<sup>st</sup> Floor, Lomond house, Beveridge Square

Livingston EH54 6QF

01506 775959

fostercare@westlothian.gov.uk

www.wlcreources.org.uk

### **Managers: Anne Hampton and Margaret Evans**

#### **Summary**

The Children & Families Resource Team is responsible for the recruitment, assessment, training and support of carers for children and young people. Our services include foster care, adoption and permanence, respite care for children with disabilities, and outreach support. We also provide assessment and support services for kinship care arrangements, and reports for the courts in relation to legally securing family care.

We are committed to supporting carer families in ensuring that National Care Standards are met by upholding principles of dignity, privacy, choice, safety, diversity and equality to maximise the potential of each child and young person. We are committed to working with partner agencies to provide continuously improving services which are responsive to service users' changing needs.

#### **Service Structure**

The service is part of Social Policy and is line managed by Jim Logue, Group Manager (Looked After Children)

## **Children & Families Social Policy**

West Lothian CHCP, Strathbrock Partnership Centre

189A West Main Street, Broxburn, EH52 5LH

01506 775549

firstname.lastname@westlothian.gov.uk

Grahame Blair, Head of Social Policy

Jennifer Scott, Senior Manager

Jo MacPherson, Group Manager (Fieldwork Services)

Jim Logue, Group Manager (Looked After Children)

Rosemary Howe, Group Manager (Specialist Services)

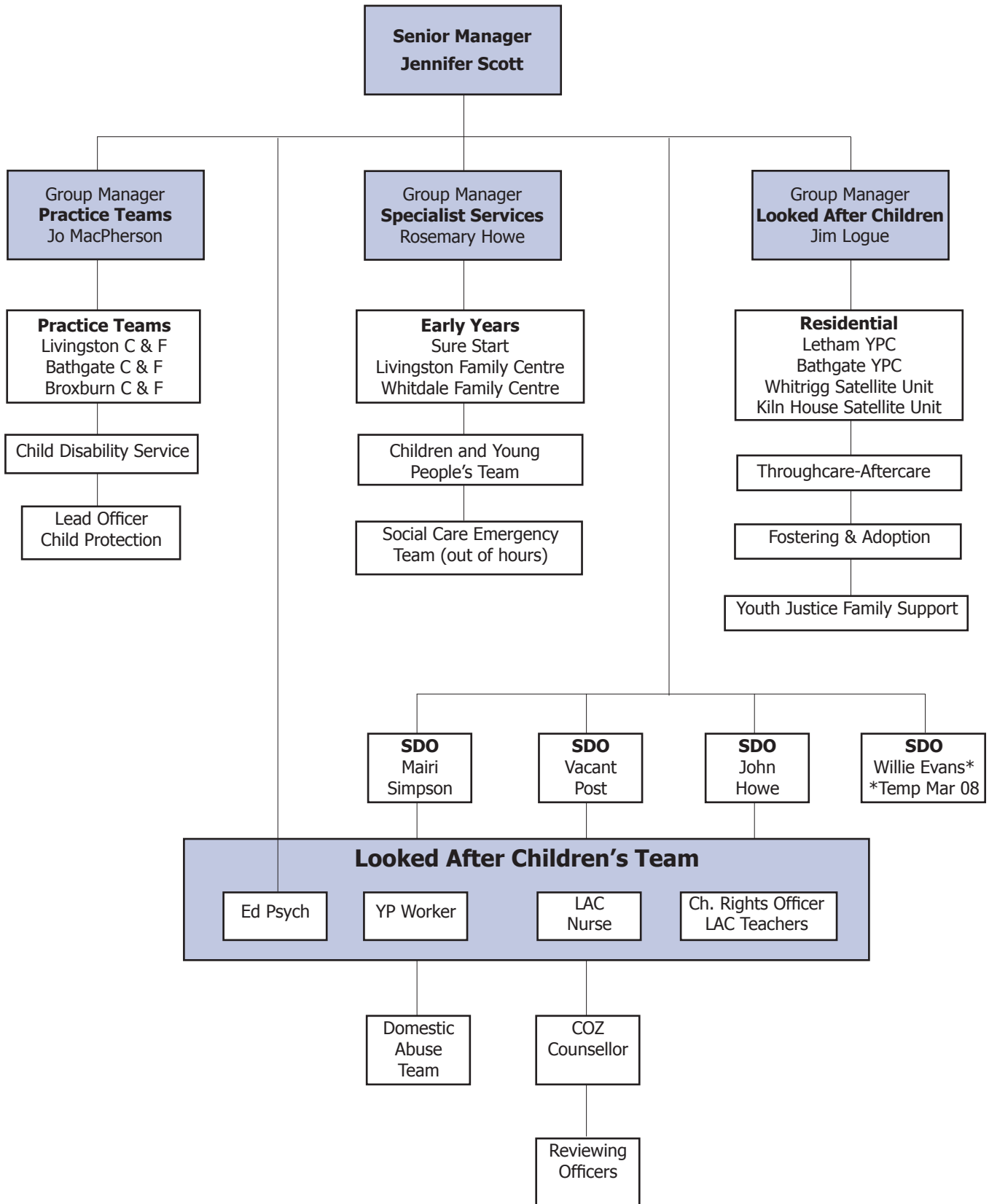
### **Summary**

Provision of all social work services, including practice teams, residential units, family and early years centres, fostering and adoption, schools services and support to young carers. Also covers Sure Start, Child Disability Service, Youth Justice Family Support, Throughcare-Aftercare Team and Domestic Abuse Service. Contributes to joint management arrangements for SW Addictions Team.

### **Statutory duties**

- to 'advise, guide and assist' children and their families
- to look after and accommodate children and young people, and provide throughcare and aftercare services
- to provide foster care and residential accommodation
- to protect children
- to provide reports to the courts and to Scottish Children's Reporter's Administration and carry out duties for the Hearing system
- to offer assessments of need for children with disability, carers of disabled children and those affected by disability of others including young carers.

# West Lothian Council Social Policy Children and Families Service Management Structure



**Croftmalloch Young People's Centre**  
Raeburn Crescent  
WHITBURN EH47 8HQ  
**Manager: Wendy Milne**

**C&F Practice Team**  
Bathgate SW Centre  
69 Whitburn Road  
BATHGATE EH48 1HE  
01506 776700  
**Managers:**  
**Colin Elliott**  
**Susan McKenzie**

**C&F Practice Team**  
Livingston SW Centre  
Cheviot House  
Owen Square  
LIVINGSTON EH54 6PW  
01506 777777  
**Managers:**  
**Margaret Keillar**  
**Sarah Summers**  
**Judith Batson**  
**Norma Paterson**

**C&F Practice Team**  
Strathbrock Partnership Centre  
189a West Main Street  
BROXBURN EH52 5LH  
01506 775666  
**Managers:**  
**Elaine McCready**  
**Sheila Morris**

**Child Disability Service**  
Lomond House  
Beveridge Square  
LIVINGSTON EH54 6QF  
01506 773789  
**Manager: Linda Sanders**

**C&F Resource Team**  
Lomond House  
Beveridge Square  
LIVINGSTON EH54 6QF  
01506 775959  
**Managers:**  
**Anne Hampton**  
**Margaret Evans**

**Children's Right's Officer**  
West Lothian House Almondvale  
Boulevard LIVINGSTON  
01506 777000  
**(Post Vacant)**

**Children and Young People Team**  
25 North Bridge Street  
BATHGATE EH48 4PJ  
01506 776929  
**Team Leaders:**  
**Ian Colgan,**  
**Dale Marsters**  
**Sonja de Rijk**

**Domestic Abuse Service**  
207-209 West Main Street  
WHITBURN EH47 0LP  
01501 745686  
**Manager: Susan Lawson**

**Kiln House**  
34 Kirkfield West LIVINGSTON  
VILLAGE EH54 7BE  
01506 414807  
Fax 01506 591726  
**AUM: Marie Chisholm**

**Letham Young People's Centre**  
Craigshill  
LIVINGSTON EH54 5NX  
01506 777313  
Fax: 01506 777310  
**Manager: Willie Hunter**

**Livingston Family Centre**  
5 Jackson Place  
LIVINGSTON EH54 6RH  
01506 775775  
Fax: 01506 775779  
**Manager: Willie Evans**

**Social Care Emergency Team (SCET)**  
Suite 11  
West Lothian House  
Almondvale Boulevard  
LIVINGSTON EH54 6QG  
01506 777401 / 777402  
**Manager: Lyn McLean**

**Social Work Addictions Team**  
Lomond House  
Beveridge Square  
LIVINGSTON EH54 6QF  
01506 773681  
**Manager: Jane Berkeley**

**Sure Start Team**  
Unit G, Kirkton Business Centre  
1 Kirk Lane  
LIVINGSTON EH54 7AY  
01506 775836  
Fax 01506 775839  
**Manager: Paula Huddart**

**Throughcare-Aftercare Team**  
Lammermuir House  
Owen Square  
LIVINGSTON  
01506 773720  
Fax: 01506 773761  
**Manager: JJ Walsh**

**Whitdale Family Centre**  
55b Whitdalehead Road  
WHITBURN 8JU  
01501 744380  
Fax 01501 749220  
**Manager: Margo McCreight**

**Whitrigg House**  
Whitrigg House, Redmill  
WHITBURN EH47 0RJ  
01501 744183  
**AUM: Linda McGrogan**

**Youth Inclusion Project**  
West Lothian House  
Almondvale Boulevard  
Livingston EH54 6QG  
**YP Development Worker:**  
**Karen Balfour**

**Youth Justice Family Support**  
2a Shiel House  
Shiel Walk  
LIVINGSTON EH54 5EH  
01506 774085  
**Manager: Bobbie Miller**

## Child Protection

West Lothian Child Protection Committee is made up of senior representatives from the local authority, NHS Lothian, Lothian and Borders Police, SCRA, the Procurator Fiscal, the private sector and a representative of the voluntary agencies in West Lothian.

The CPC is chaired by Jo Macpherson, Group Manager for Practice Teams. Jo Macpherson 01506 777770  
[jo.macpherson@westlothian.gov.uk](mailto:jo.macpherson@westlothian.gov.uk)

The main CPC has four sub committees chaired by the Chair of the CPC, vice Chairs and the Lead Officer. Lead Officer for Child Protection: Jane Ridgway 01506 775556  
[jane.ridgway@westlothian.gov.uk](mailto:jane.ridgway@westlothian.gov.uk)

## Children and Young People Teams

25 North Bridge Street, Bathgate  
01506 776929

(Formerly known as Integrated Children & Young People Support Team)

### Team Leaders:

Ian Colgan North Locality  
Sonja de Rijk South Locality  
Dale Marsters West Locality

Three teams, consisting of Youth Strategy Workers, Education Welfare Officers and Family Support Workers, have been established to offer a pupil and family support service.

The teams are based in school clusters and work in collaboration with appropriate partners to help ensure that children and young people with difficulties are prevented from finding themselves the subject of referrals to statutory services, through early intervention and the use of a range of innovative methods.

## Circle West Lothian

c/o Blackburn Homeless Unit  
151 Rowan Drive, Blackburn, EH47 7NZ  
01506 653360  
[firstname.lastname@westlothian.gov.uk](mailto:firstname.lastname@westlothian.gov.uk)

Circle provides intensive support to children and families affected by parental drug and/or alcohol use in West Lothian including:

- Support to parents with parenting issues and on developing a safer lifestyle
- Encouraging and supporting parents to engage with drug and alcohol services
- Individual and group support to children and adults
- Support to access other services for children and families

Referrals can be made by a parent or professional.

## **Citizens Advice Bureau (West Lothian)**

Suite Seven, Shiel House, Craigshill  
Livingston EH54 5EH

01506 432977 (advice)  
01506 436132 (administration)  
01506 431061 (appointments)  
Fax: 01506 441986

[enquiries@cabwestlothian.org.uk](mailto:enquiries@cabwestlothian.org.uk)  
[www.cabwestlothian.org.uk](http://www.cabwestlothian.org.uk)  
[www.adviceguide.org.uk](http://www.adviceguide.org.uk)

### **Summary**

Citizens Advice Bureau West Lothian offers advice, information and assistance across a wide range of subjects to the communities of West Lothian. Our core topics are benefits, consumer debt, employment, housing, relationships, tax and utilities. Our service is delivered by a team of trained volunteer advisors who are supported by our paid staff.

We have specialist advisers who offer assistance in the areas of employment and money advice

### **Service Structure**

Our paid staff team consists of a Manager, Advice Session Supervisor and a Receptionist/Administrator. All our advisers undertake the national Adviser Training Programme and are assessed on their competence on a regular basis.

Our activities are monitored regularly and organisational and quality of advice audits are carried out by Citizens Advice Scotland.

Our core funding is provided by West Lothian Council, who also audit our work through their Best Value process.

### **Advice Sessions**

Mon, Tues & Thurs:	10.00am–12.30pm & 1.30–4.00pm
Wednesday:	10.00am–12.30pm
Friday:	10.00am–3.30pm

All the above sessions offer advice by telephone. Open door (drop-in) access is provided on Monday, Tuesday, Thursday and Friday between 10am and 12.30pm. There is no drop-in service in the afternoons.

**COZ - Chill Out Zone**  
7 Gardners Lane, Bathgate EH48 1TP  
01506 652436  
Contact: Cath Kidd

The Service

Opened in June 2003, the Chill Out Zone (known as COZ) is a Healthy Living Centre for young people aged 12-20 living in West Lothian. Based in Bathgate, its aim is to improve the health and well being of young people through the provision of a range of 'young people centred' health and development services, including: -

- access to a multi-disciplinary staff team with backgrounds in health, education and youth work, offering information, advice and support with a range of health related issues
- health clinic, offering access to a range of confidential medical services concerning young people's physical, emotional, mental and sexual health
- drop in service with access to a range of information and advice from a range of specialist workers and planned activities
- access to a café providing light and healthy snacks and opportunities to develop skills in food preparation and cooking
- referral to specialist agencies
- computer suite with free access to Internet
- community resource offering a unique setting for promotions and launches.
- confidential counselling service  
– contact Lorna Paterson 01506 652436

COZ is funded by:

- Children 1st
- West Lothian Council Social Policy
- West Lothian Council Education Services
- West Lothian NHS Healthcare Trust

Co-ordinated by Children 1st, COZ services are developed and delivered in partnership with: -

- Community Education Services
- West Lothian NHS Healthcare Trust
- Voluntary Organisations
- Young People

## **Couple Counselling Lothian**

9A Dundas Street, Edinburgh, EH3 6QG

0131 556 1527

[cclothian@btopenworld.com](mailto:cclothian@btopenworld.com)

### **Summary**

Couple Counselling Lothian offers counselling and a range of other services for couples and individuals. As well as helping those who are thinking of staying together, separating or dealing with divorce, we see many people whose relationship had ended and who want to explore the issues around making new relationships.

### **Service Structure**

Company limited by guarantee, of charitable status.

Manager: Deirdre Bett (available Mon-Wed)

Practice Manager: Audrey Neill (available Thurs-Fri)

Opening hours for telephone enquiries:

Monday - Thursday 9.00am to 9.00pm

Friday - 9.00am to 4.00pm

Saturday - 10.00am to 1.00pm

## **Criminal Justice**

Ground Floor, Lomond House, Beveridge Square,  
Livingston EH54 6QF

01506 775900 Fax 772925

[criminaljusticeteam@westlothian.gov.uk](mailto:criminaljusticeteam@westlothian.gov.uk)

**Criminal Justice Manager: Tim Ward**

### **Summary**

West Lothian Council Criminal Justice Social Work Service is committed to promoting community safety in order to help make this community a safer place to live. The service provides reports and advice to the Courts and supervises offenders on statutory orders such as Probation and Community Service. Criminal Justice also provides statutory and non-statutory voluntary support to offenders in the community.

### **Service Structure**

The service is operated by West Lothian Council Social Policy.

## **Croftmalloch Young People's Centre**

Raeburn Crescent, Whitburn EH47 8HQ  
firstname.lastname@westlothian.gov.uk  
Manager: Wendy Milne

### **Summary**

Purpose-built in 2007, Croftmalloch Young People's Centre provides residential care and support to six young people. Each young person has a key worker and staff work closely with Practice Team colleagues and partner agencies in providing an individualised care plan which is reviewed regularly through the LAC review process.

Referrals for a placement should be made to the Resources Group which meets weekly.

### **Structure**

The centre is part of Social Policy and is line managed by Jim Logue, Group Manager (Looked After Children)

## **Cruise Bereavement Care (West Lothian)**

01501 645001 - Referrals  
01786 821730 - Administrator

### **Summary**

Cruise provides information, advice and counseling for bereaved children and young people.

National Office: 01738 443444

## **Domestic Abuse Service**

207-209 West Main Street, Whitburn EH47 0LP

01501 745686

domdas@westlothian.gsx.gov.uk

Manager: Susan Lawson

### **The Service**

Opened in 2007, the Domestic Abuse Service works with women and children who have experienced (or are experiencing) domestic abuse.

Our Minority Population Worker provides a service to women and children from the black and minority ethnic, foreign nationals and gypsy travellers communities, and our Partner Support Worker works with female partners of men who have participated (or are participating) in the court-mandated 'Change Programme'

Services for children:

- Safety planning
- Individual work
- Groupwork
- Prevention awareness / training
- 'Drop in' service within selected schools

Services for women:

- Safety planning
- Advocacy, advice and information
- Signposting to other agencies
- Interpretation and translation service available

The service is funded by the Scottish Government and West Lothian Council.

## **Early Years Outreach Service**

C/o Livingston Family Centre, 5 Jackson Place, Eliburn  
Livingston EH54 6RH  
01506 775775 Fax 01506 775779  
lfc@westlothian.gov.uk  
www.livingstonfamilycentre.org.uk

### **Summary**

The Early Years Outreach Team was formed in September 2005 and operates from Livingston Family Centre. Comprising a small team of qualified Nursery Officers, we provide a range of services to families with young children. These include individual support packages, parenting assessments, reports for Children's Hearings and CP case conferences and general advice and guidance on parenting.

Based in Livingston, the outreach team serves the whole of the West Lothian area.

### **Service Structure**

The team is managed by Willie Evans, Unit Manager and supervised by senior staff from Livingston Family Centre.

## **Edinburgh & Lothian Council on Alcohol**

6 Clifton Terrace, Edinburgh, EH12 5DR  
Contact: Meichelle Walker  
0131 337 8188 0131 337 9825 fax  
elca@btconnect.com

### **Summary**

Provision of free specialist advice, information, counselling and support for anyone worried about their own or someone else's drinking. ELCA's services open to anyone 16 years and over. Specific Tenancy Support and Supported Accommodation Service based in West Lothian for anyone who is homeless or at risk of becoming homeless due to their alcohol problem.

Managed by a Board of Directors (Management Committee) the senior management team manages day to day responsibilities:

Meichelle Walker – General Manager, Edinburgh.

Anne Hanley – Practice Manager, Livingston.

Pamela Gordon – Administration Manager, Livingston.

### **Other locations**

ELCA West Lothian Services, Suite P, Kirkton Business Centre,  
Kirk Lane, Livingston Village, Livingston, EH54 7AY  
01506 414 247

Voluntary Counselling Service based in the Primary Care Health Centre in Bathgate on Friday afternoons. Appointments made through our main office in Edinburgh.

## **Education & Cultural Services - Community Learning and Development Service**

Education & Cultural Services, Lindsay House,  
Bathgate EH48 1TS  
01506 776101

### **Summary**

The service works with young people, providing an educational process within safe settings based on experiential learning, participation in decision making and confidence building. Its aim is to provide a range of opportunities which will aid the young people's personal and social development. The core activities are:

- Mainstream Clubs
- Holiday Activities
- Youth Strategy
- Issue Based
- International Work
- Youth Participation/Youth Information
- Young People and Community Safety
- Support to Volunteers

The two Team Managers are based in area offices in the West and North, with functional responsibilities for work with young people and adult education & building community capacity.

### **Contact List**

#### **Gerry Fitzpatrick**

Head of Cultural Services  
01506 776101  
[gerry.fitzpatrick@westlothian.gov.uk](mailto:gerry.fitzpatrick@westlothian.gov.uk)

#### **Teresa Simpson**

Administrative Assistant  
01506 776093 Fax 01506 776095

#### **SOUTH AREA OFFICE**

Almondbank Comm Ed Resource Centre  
Almondbank P.S., Livingston EH54 5EJ

#### **Fiona Stewart**

Clerical Assistant  
01506 777505 Fax 777507

#### **WEST AREA OFFICE**

Murrayfield P.S., Catherine Terrace, Blackburn EH47 7DX

#### **Alastair Colquhoun**

Team Manager – Work with Young People

01506 776478

[alastair.colquhoun@wled.org.uk](mailto:alastair.colquhoun@wled.org.uk)

#### **Pat Cole**

Admin Asst 01506 776479

#### **Annette Lambourne**

Training & Quality Assurance Officer

#### **NORTH AREA OFFICE**

Strathbrock Partnership Centre

189A West Main Street, Broxburn EH52 5LH

#### **Ian McIntosh**

Team Manager - Work with Adults and Communities

01506 7771738

[ian.mcintosh@wled.org.uk](mailto:ian.mcintosh@wled.org.uk)

#### **Linda Sayers**

Admin Asst 01506 771743

#### **ADDIEWELL COMMUNITY EDUCATION WING**

Church Street, Addiewell EH55 8PG

Co-ordinator: Andy Hunter 01501 762796

#### **ARMADALE COMMUNITY EDUCATION CENTRE**

North Street, Armadale EH48 3QB

Co-ordinator: Kath Brown 01501 678512 Fax 01501 678511

#### **BATHGATE COMMUNITY EDUCATION CENTRE**

Marjoribanks Street Bathgate EH48 1AH

Co-ordinator: Joyce Murphy 01506 775151 Fax 775155

#### **BLACKBURN COMMUNITY EDUCATION CENTRE**

Ashgrove Blackburn EH47 7LJ

Co-ordinator: Isobel Smith 01506 653014

#### **BRIDGEND COMMUNITY EDUCATION CENTRE**

Auldhill Road Bridgend EH49 6NZ

Contact: 01506 834536

#### **BROXBURN COMMUNITY CENTRE**

Strathbrock Partnership Centre

189A West Main Street Broxburn EH52 5LH

Co-ordinator: Linda Sayers 01506 771735 Fax 01506 771737

#### **CARMONDEAN COMMUNITY CENTRE**

Fells Rigg Livingston EH54 8AX

Co-ordinator: Isobel Darge 01506 439568

#### **CRAIGINN CENTRE**

Main Street, Blackridge EH48 3SP

Co-ordinator: Linda Maxwell 01501 753227 Fax 753227

**CROFTHED FARM COMMUNITY CENTRE**

Templar Rise, Livingston EH54 8DG  
Co-ordinator: Karen Kirton 01506 777707

**DECHMONT MEMORIAL COMMUNITY EDUCATION CENTRE**

Main Street, Dechmont EH52 6LJ  
01506 811022

**DEDRIDGE COMMUNITY EDUCATION WING**

Dedridge Primary School, Dedridge East, Livingston EH54 6JQ  
01506 412831

**EAST CALDER COMMUNITY EDUCATION CENTRE**

143 Main Street, East Calder EH53 0EP  
Co-ordinator: Marlene Burford 01506 881557

**EAST WHITBURN COMMUNITY EDUCATION CENTRE**

Hen Nest Road, East Whitburn, EH47 8EX  
Co-ordinator: Janette Wood 01501 740938

**ELIBURN COMMUNITY EDUCATION CENTRE**

Garden Place, Eliburn, Livingston  
01506 415492

**FAULDHOUSE COMMUNITY EDUCATION CENTRE**

Lanrigg Road, Fauldhouse EH47 9JA  
Co-ordinator: James Swift 01501 770552 FAX 770910

**FORESTBANK COMMUNITY EDUCATION CENTRE**

Forestbank, Ladywell, Livingston, EH54 6DX  
Co-ordinator: Sandra McLaughlan 01506 430035

**GREENRIGG COMMUNITY EDUCATION CENTRE**

Greenrigg Primary School, Polkemmet Road, Greenrigg,  
Harthill 01501 770552

**LANTHORN COMMUNITY EDUCATION COMPLEX**

Kenilworth Rise, Livingston EH54 6JL  
Co-ordinators: Jim Allan, Donna Lee 01506 777707 FAX  
417679

**LETHAM COMMUNITY EDUCATION WING**

Letham Primary School, Forth Drive, Livingston EH54 5LZ  
01506 432013

**LIVINGSTON STATION COMMUNITY EDUCATION CENTRE**

4 Main Street, Deans, Livingston EH54 8BE  
Co-ordinator: Peter Christie 01506 414002

**LIVINGSTON STATION COMMUNITY EDUCATION YOUTH  
CENTRE**

7 Main Street, Livingston EH54 8BE  
Co-ordinator: Peter Christie 01506 411295

**LIVINGSTON VILLAGE COMMUNITY EDUCATION CENTRE**

Kirkton North Road, Livingston EH54 7EQ  
01506 417343

**MID CALDER INSTITUTE HALL**

15 Market Street, Mid Calder, EH53 0AT  
Co-ordinator: Jim Brophy 01506 881246

**MOSSWOOD COMMUNITY EDUCATION CENTRE**

Ferguson Way, Knightsbridge, Livingston EH54 8JF  
Co-ordinator: Margaret McClafferty 01506 437661

**NEWYEARFIELD FARM COMMUNITY EDUCATION CENTRE**

Hawkbrae, Ladywell West, Livingston EH54 6TW  
01506 462458

**NEWTON COMMUNITY EDUCATION CENTRE**

26 Duddingston Crescent, Newton EH52 6QG  
Co-ordinator: Angela Grant 0131 331 3290

**PHILPSTOUN COMMUNITY EDUCATION CENTRE**

Main Street, Philpstoun EH49 6RA  
Co-ordinator: Hazel Baff 01506 834360

**RIVERSIDE COMMUNITY EDUCATION WING**

Riverside Primary School, The Mall, Livingston EH54 5EJ  
01506 777691

**SEAFIELD COMMUNITY EDUCATION CENTRE**

Main Street, Seafield EH47 7AL  
Co-ordinator: Caroline Fraser 01506 631791

**SPRINGFIELD COMMUNITY EDUCATION WING**

Springfield Primary School, Springfield Road, Linlithgow  
EH49 7SN  
01506 847455 FAX 847455

**STONEYBURN COMMUNITY EDUCATION CENTRE**

Main Street, Stoneyburn EH47 8BY  
Co-ordinator: Joe Smith 01501 762323

**THE JAMES YOUNG HIGH SCHOOL**

Quentin Rise, Dedridge West, Livingston EH54 6NG  
01506 774472 FAX 497014

**TORONTO COMMUNITY EDUCATION WING**

Toronto Primary School, Howden East, Livingston EH54 6BN  
01506 431465

**TORPHICHEN COMMUNITY EDUCATION CENTRE**

Bowyett, Torphichen EH48 4LZ  
Co-ordinator: Laura Redmond 01506 652383

**UPHALL COMMUNITY EDUCATION CENTRE**

Strathbrock Place, Uphall EH52 6BN  
Co-ordinator: Denise Doig 01506 854451

**WEST CALDER COMMUNITY EDUCATION CENTRE**

Dickson Street, West Calder EH55 8DZ  
Co-ordinator: Danny Graham 01506 871278 FAX 871738

**WHITBURN COMMUNITY EDUCATION CENTRE**

Manse Road, Whitburn EH47 8EZ  
Co-ordinator: Archie Munro 01501 678888 FAX 678889

## **WINCHBURGH COMMUNITY EDUCATION CENTRE**

Craigton Place, Winchburgh EH52 6RW  
Co-ordinator: Alfie Carmichael 01506 890348

### **Community High Schools**

#### **DEANS COMMUNITY HIGH SCHOOL**

Eastwood Park, Deans, Livingston EH54 8PS  
01506 431972 FAX 497025

#### **INVERALMOND COMMUNITY HIGH SCHOOL**

Willowbank, Ladywell East, Livingston EH54 6HN  
01506 438093

## **Education & Cultural Services - Education Development and Quality Assurance**

Lindsay House, South Bridge Street, Bathgate, EH48 1TS  
Heads of Service - 01506 776017 & 01506 776107  
General Office - 01506 776130  
firstname.lastname@westlothian.gov.uk

### **The Service**

- Curriculum Support & Development
- Quality Assurance of Schools including Review of Schools and Head Teachers
- Recruitment of Head Teachers & Other Senior Staff

### **Statutory Duties:**

- To monitor the quality of Education Provision in West Lothian Schools and ensure implementation of The Schools (Scotland) Act 2000.

### **Senior Management :**

#### **Gordon Ford**

Director of Education and Cultural Services  
Secretary to the Director: Tracy Sinton - 777415

#### **Pat Sweeney**

Head of Education (Quality Assurance)  
Support Research Assistant: Catherine Jack - 776106

#### **Moira Niven**

Head of Education (Development)  
Support Research Assistant: Grace Harris - 776016

#### **Mary Rankine**

Senior Education Development Manager - 776130

## Education Officers:

Alan Millar	776134
Ronnie Boyd	776136
Isobel Chalmers	776109
Meg Morrison	776137
Donald Stewart	776105
John Tease	776380
Phyllis Wood	776026
Alison Watson	776124
Kay Ryan	776112
Doreen McPhail	776355
David McLean	776367

## Education Establishments

Headquarters, Lindsay House, South Bridge Street  
Bathgate EH48 1TS  
01506 776000 Fax: 01506 776378

## Gordon Ford – Head of Education & Cultural Services

### Early Years Centres

Bathgate Early Years Centre Whitburn Rd Bathgate EH48 2RD	HT: Mvairi Lynch Tel: 01506 776234 Fax: 01506 776244 email: bathgate.eyc@wled.org.uk
Inveralmond Early Years Centre Willowbank, Ladywell Livingston EH54 6HN	HT: Aileen German Tel: 01506 441907 Fax: 01506 438446 email: inveralmond.eyc@wled.org.uk
Knightsridge Early Years Centre Cameron Way, Knightsridge Livingston EH54 8HE	HT: Morag Stewart Tel: 01506 444970 Fax: 01506 444979 email: knightsridge.eyc@wled.org.uk
Whitdale Early Years Centre 55b Whitdalehead Rd Whitburn EH47 8JU	HT: Lynne Glen Tel: 01501 744388 Fax: 01501 749220 email: whitdale.eyc@wled.org.uk

### Nurseries

Bathgate West Nursery 63 Millburn Rd Bathgate EH48 2AF	HT: Mvairi Lynch Tel: 01506 652004 Fax: 01506 652004 email: bathgatewest.ns@wled.org.uk
Bonnytoun Nursery 161 Springfield Rd Linlithgow EH49 7SN	HT: Anne Matonti Tel: 01506 847454 Fax: 01506 847454 email: bonnytoun.ns@wled.org.uk
Eastertoun Nursery Manse Ave Armadaledale EH48 3HS	HT: Susan Cowan Tel: 01501 732299 Fax: email: eastertoun.ns@wled.org.uk
Eliburn Nursery Class 5 Jackson Pl, Eliburn Livingston EH54 6RH	HT: Aileen German Tel: 01506 419484 Fax: email: inveralmond.eyc@wled.org.uk
Glenvue Nursery Dedrige East Livingston EH54 6JQ	HT: Fiona Barber Tel: 01506 412333 Fax: n/a email: glenvue.ns@wled.org.uk

Hopefield Nursery Hopefield Rd Blackburn EH47 7HZ	HT: Irene McCrystal Tel: 01506 630944 Fax: 01506 630944 email: hopefield.ns@wled.org.uk
Kirkhill Nursery Rashierigg Broxburn EH52 6AW	HT: Anne Moir Tel: 01506 853118 Fax: n/a email: kirkhill.ps@wled.org.uk
Ladywell Nursery Willowbank, Ladywell Livingston EH54 6HN	HT: Marian Gibb Tel: 01506 434542 Fax: 01506 439480 email: ladywell.ns@wled.org.uk
Polbeth Nursery Polbeth Rd West Calder EH55 8SR	HT: Fiona Barber Tel: 01506 872511 Fax: 01506 872511 email: polbeth.ns@wled.org.uk
Woodlands Nursery Harburn Ave, Deans Livingston EH54 8NQ	HT: Mary McNamee Tel: 01506 412608 Fax: 01506 412608 email: woodlands.ns@wled.org.uk

## Primary Schools

Addiewell Primary Church St Addiewell EH55 8PG	HT: Ruth Malcolm Tel: 01501 762794 Fax: 01501 762737 Email: addiewell.ps@wled.org.uk
Armadale Primary Academy St Armadale EH48 3JD	HT: Allison Phillips Tel: 01501 730282 Fax: 01501 730301 Email: armadale.ps@wled.org.uk
Balbardie Primary Torphichen St Bathgate EH48 4HL	HT: Audrey Ford (Acting) Tel: 01506 652155 Fax: 01506 631276 Email: balbardie.ps@wled.org.uk
Bankton Primary Kenilworth Dr, Dedridge Livingston EH54 6JL	HT: Marlyn Taylor Tel: 01506 413001 Fax: 01506 418550 Email: bankton.ps@wled.org.uk
Bellsquarry Primary 52 Calder Rd, Bellsquarry Livingston EH54 9AD	HT: Charlette Robertson Tel: 01506 410777 Fax: 01506 410777 Email: bellsquarry.ps@wled.org.uk
Blackburn Primary Riddochhill Rd Blackburn EH47 7HB	HT: Fiona MacKenzie Tel: 01506 653481 Fax: 01506 651329 Email: blackburn.ps@wled.org.uk
Blackridge Primary Main St Blackridge EH48 3RJ	HT: Gillian Millar (Acting) Tel: 01501 751223 Fax: 01501 753347 Email: blackridge.ps@wled.org.uk
Boghall Primary Elizabeth Dr Boghall Bathgate EH48 1JB	HT: Ann Duncan Tel: 01506 652609 Fax: 01506 650352 Email: boghall.ps@wled.org.uk
Bridgend Primary Auldhill Rd Bridgend EH49 6NZ	HT: Helen Rarity Tel: 01506 834204 Fax: 01506 834813 Email: bridgend.ps@wled.org.uk

Broxburn Primary School Lane, off West Main St Broxburn EH52 5RP	HT: Catriona Grant Tel: 01506 852018 Fax: 01506 858554 Email: broxburn.ps@wled.org.uk
Carmondean Primary Knightsridge Rd West Livingston EH54 8PX	HT: Helen McCulloch (Acting) Tel: 01506 432492 Fax: 01506 441795 Email: carmondean.ps@wled.org.uk
Croftmalloch Primary via Raeburn Cres Whitburn EH47 8HQ	HT: Lynn Howitt Tel: 01501 740506 Fax: 01501 742007 Email: croftmalloch.ps@wled.org.uk
Deans Primary Deans Rd South, Deans Livingston EH54 8DB	HT: Lorraine Collins Tel: 01506 411208 Fax: 01506 419296 Email: deans.ps@wled.org.uk
Dechmont Infant Main St, Dechmont Broxburn EH52 6LJ	HT: Lorna Brockbank Tel: 01506 811264 Fax: 01506 811264 Email: dechmontinfant.ps@wled.org.uk
Dedridge Primary Dedridge East Livingston EH54 6JQ	HT: Jean Hutchison Tel: 01506 412830 Fax: 01506 412800 Email: dedridge.ps@wled.org.uk
East Calder Primary 9 Langton Rd East Calder EH53 0BL	HT: Alice Anderson Tel: 01506 880810 Fax: 01506 884570 Email: eastcalder.ps@wled.org.uk
Eastertoun Primary 13 Manse Ave Armadale EH48 3HS	HT: Gerald Cowan Tel: 01501 730462 Fax: 01501 734225 Email: eastertoun.ps@wled.org.uk
Falla Hill Primary Harthill Rd Fauldhouse EH47 9HS	HT: Anita Craig Tel: 01501 770210 Fax: 01501 772758 Email: fallahill.ps@wled.org.uk
Greenrigg Primary Polkemmet Rd, Greenrigg Harthill ML7 5RF	HT: Iain McDermott (Acting) Tel: 01501 751334 Fax: 01501 751334 Email: greenrigg.ps@wled.org.uk
Harrismuir Primary Willowbank Livingston EH54 6HN	HT: Susan MacKenzie Tel: 01506 434501 Fax: 01506 442987 Email: harrismuir.ps@wled.org.uk
Holy Family RC Primary Glendevon Park Winchburgh EH52 6UE	HT: Margaret Johns Tel: 01506 890208 Fax: n/a Email: holyfamily.ps@wled.org.uk
Howden St Andrews RC Primary Kingsport Ave, Howden East Livingston EH54 6BA	HT: Matthew Devine Tel: 01506 433114 Fax: 01506 435954 Email: howdenstandrews.ps@wled.org.uk
Kirkhill Primary Rashierigg Broxburn EH52 6AW	HT: Anne Moir Tel: 01506 853821 Fax: 01506 857926 Email: kirkhill.ps@wled.org.uk
Kirknewton Primary 21 Station Rd Kirknewton EH27 8DD	HT: Jean Fleming (Acting) Tel: 01506 881461 Fax: 01506 885770 Email: kirknewton.ps@wled.org.uk

Knightsridge Primary Davidson Way, Knightsridge Livingston EH54 8HG	HT: Joan Naysmith (Acting) Tel: 01506 434012 Fax: 01506 441198 Email: knightsridge.ps@wled.org.uk
Letham Primary Forth Drive, Craigshill Livingston EH54 5LZ	HT: Valerie Brodie Tel: 01506 432012 Fax: 01506 497091 Email: letham.ps@wled.org.uk
Linlithgow Bridge Primary East Mill Rd Linlithgow Bridge EH49 7PB	HT: Anne Corr Tel: 01506 671428 Fax: 01506 671418 Email: linlithgowbridge.ps@wled.org.uk
Linlithgow Primary Preston Rd Linlithgow EH49 6HB	HT: David Simpson Tel: 01506 842686 Fax: 01506 846298 Email: linlithgow.ps@wled.org.uk
Livingston Village Primary Kirkton Rd North Livingston Village EH54 7EQ	HT: Jill Cameron (Acting) Tel: 01506 429620 Fax: 01506 419408 Email: livingstonvillage.ps@wled.org.uk
Longridge Primary School Rd Longridge EH47 8AG	HT: Elsie Aitken Tel: 01501 770208 Fax: 01501 770208 Email: longridge.ps@wled.org.uk
Low Port Primary Blackness Rd Linlithgow EH49 7HZ	HT: Anne Cook (Acting) Tel: 01506 842060 Fax: 01506 671492 Email: lowport.ps@wled.org.uk
Meldrum Primary Westwood Park, Deans Livingston EH54 8NW	HT: Lilian Davidson Tel: 01506 410440 Fax: 01506 462099 Email: meldrum.ps@wled.org.uk
Mid Calder Primary Spottiswood Gdns Mid Calder EH53 0RR	HT: Alan Girdwood Tel: 01506 882092 Fax: 01506 885814 Email: midcalder.ps@wled.org.uk
Murrayfield Primary Catherine Terr Blackburn EH47 7DX	HT: Margaret Brown Tel: 01506 653400 Fax: 01506 636119 Email: murrayfield.ps@wled.org.uk
Our Lady of Lourdes RC Primary Hopefield Rd Blackburn EH47 7HZ	HT: Patricia Paterson (Acting) Tel: 01506 653103 Fax: 01506 650817 Email: ourladyoflourdes.ps@wled.org.uk
Our Ladys RC Primary 79 Main St Stoneyburn EH47 8BY	HT: Frances Burns Tel: 01501 762265 Fax: 01501 762497 Email: ourladys.ps@wled.org.uk
Parkhead Primary Harburn Rd West Calder EH55 8AH	HT: Carol Gordon Tel: 01506 871404 Fax: 01506 873804 Email: parkhead.ps@wled.org.uk
Peel Primary Garden Pl, Eliburn East Livingston EH54 6RA	HT: Graeme Logan Tel: 01506 414892 Fax: 01506 417886 Email: peel.ps@wled.org.uk
Polkemmet Primary The Avenue Whitburn EH47 0BX	HT: Doreen Steel Tel: 01501 740319 Fax: 01501 744268 Email: polkemmet.ps@wled.org.uk

Pumpherston & Uphall Station Community Primary 18 Uphall Station Rd Pumpherston EH53 0LP	HT: Shameem Ali Tel: 01506 432152 Fax: 01506 437809 Email: pumpherstonuphallst.ps@wled.org.uk
Riverside Primary Maree Walk Livingston EH54 5BP	HT: Margaret Leighton Tel: 01506 432248 Fax: 01506 441539 Email: riverside.ps@wled.org.uk
Seafield Primary Cousland Terr Seafield EH47 7BL	HT: Marjorie W Morris Tel: 01506 652916 Fax: 01506 652916 Email: seafield.ps@wled.org.uk
Simpson Primary School Leyland Road Bathgate EH48 2SG	HT: Lucy MacLean Tel: 01506 656371 Fax: Email: simpson.ps@wled.org.uk
Springfield Primary 141 Springfield Rd Linlithgow EH49 7SN	HT: Linda Simpson Tel: 01506 847452 Fax: 01506 671834 Email: springfield.ps@wled.org.uk
St Anthony's RC Primary South St Armadae EH48 3EU	HT: James McCrory Tel: 01501 731668 Fax: 01501 734349 Email: stanthonys.ps@wled.org.uk
St Columbas RC Primary Philip Ave, Boghall Bathgate EH48 1NQ	HT: Maureen Allan Tel: 01506 653822 Fax: 01506 656081 Email: stcolumbas.ps@wled.org.uk
St John Ogilvie RC Primary Harburn Ave, Deans Livingston EH54 8NQ	HT: Michael Marzella Tel: 01506 412560 Fax: n/a Email: stjohnogilvie.ps@wled.org.uk
St John The Baptist RC Primary Lanrigg Ave Fauldhouse EH47 9JR	HT: Anne Purdie Tel: 01501 770232 Fax: 01501 770232 Email: stjohthebaptist.ps@wled.org.uk
St Josephs RC Primary (Linlithgow) Preston Rd Linlithgow EH49 6HB	HT: Kathleen McMahon Tel: 01506 842578 Fax: 01506 843050 Email: stjosephsliinlithgow.ps@wled.org.uk
St Josephs RC Primary (Whitburn) Gateside Rd Whitburn EH47 0NJ	HT: Maureen McNaughton Tel: 01501 740452 Fax: n/a Email: stjosephswhitburn.ps@wled.org.uk
St Marys RC Primary (Bathgate) Whitburn Rd Bathgate EH48 2DR	HT: Moira Claase Tel: 01506 652511 Fax: 01506 650338 Email: stmarysbathgate.ps@wled.org.uk
St Marys RC Primary (Polbeth) 10 Polbeth Rd, Polbeth West Calder EH55 8SR	HT: Frank Boles Tel: 01506 871520 Fax: 01506 873723 Email: stmaryspolbeth.ps@wled.org.uk
St Nicholas RC Primary West Main St Broxburn EH52 5RH	HT: Karen Brown Tel: 01506 853509 Fax: 01506 852496 Email: stnicholas.ps@wled.org.uk
St Ninians RC Primary Douglas Rise, Dedridge Livingston EH54 6JR	HT: Isobel McKendrick Tel: 01506 414612 Fax: 01506 400048 Email: stninians.ps@wled.org.uk
St Pauls RC Primary Main St East Calder EH53 0ES	HT: Gerry O'Brien Tel: 01506 881665 Fax: 01506 501666 Email: stpauls.ps@wled.org.uk

St Thomas RC Primary Church St Addiewell EH55 8PG	HT: Marie Moynagh Tel: 01501 762794 Fax: 01501 762737 Email: stthomas.ps@wled.org.uk
Stoneyburn Primary 2 Main St Stoneyburn EH47 8BA	HT: Debbie Henry (Acting) Tel: 01501 762253 Fax: 01501 762089 Email: stoneyburn.ps@wled.org.uk
Toronto Primary Howden East Livingston EH54 6BN	HT: Pam Hamilton Tel: 01506 431461 Fax: 01506 432361 Email: toronto.ps@wled.org.uk
Torphichen Primary The Loan Torphichen EH48 4NF	HT: Rita Angus (Acting) Tel: 01506 652246 Fax: 01506 639827 Email: torphichen.ps@wled.org.uk
Uphall Primary Crossgreen Dr Uphall EH52 6DS	HT: Lesley Cameron Tel: 01506 852516 Fax: 01506 854991 Email: uphall.ps@wled.org.uk
Westfield Primary Lomond View Westfield EH48 3DE	HT: Rita Angus (Acting) Tel: 01506 634019 Fax: n/a Email: westfield.ps@wled.org.uk
Whitdale Primary 55a Whitdalehead Rd Whitburn EH47 8JU	HT: Susan Ralston (Acting) Tel: 01501 740548 Fax: 01501 745829 Email: whitdale.ps@wled.org.uk
Williamston Primary Bankton Lane, Murieston Livingston EH54 9DQ	HT: Arlene Black Tel: 01506 415311 Fax: 01506 462829 Email: williamston.ps@wled.org.uk
Winchburgh Primary Glendevon Park Winchburgh EH52 6UE	HT: Frances Rosevear Tel: 01506 890202 Fax: n/a Email: winchburgh.ps@wled.org.uk
Windyknowe Primary Windyknowe Cres Bathgate EH48 2BT	HT: Rae Malcolm Tel: 01506 652083 Fax: 01506 634669 Email: windyknowe.ps@wled.org.uk
Woodmuir Primary Woodmuir Rd, Breich West Calder EH55 8JN	HT: Elsie Aitken (secondment) Tel: 01501 770312 Fax: 01501 770312 Email: woodmuir.ps@wled.org.uk

## Secondary Schools

Armada Academy West Main St Armada EH48 3LY	HT: Graham Johnstone Tel: 01501 730601 Fax: 01501 735900 Email: armadale.ac@wled.org.uk
Bathgate Academy Edinburgh Rd Bathgate EH48 1LF	HT: Joseph Boyd Tel: 01506 653725 Fax: 01506 652262 Email: bathgate.ac@wled.org.uk
Broxburn Academy Cardross Rd Broxburn EH52 6AG	HT: Peter Reid Tel: 01506 852521 Fax: 01506 856211 Email: broxburn.ac@wled.org.uk
Deans Community High School Eastwood Park Livingston EH54 8PS	HT: Margaret Ross Tel: 01506 497090 Fax: 01506 497025 Email: deans.chs@wled.org.uk

Inveralmond Community High School Willowbank, Ladywell Livingston EH54 6HN	HT: William Tevendale Tel: 01506 438093 Fax: 01506 442313 Email: inveralmond.chs@wled.org.uk
James Young High School Quentin Rise, Dedridge West Livingston EH54 6NE	HT: Christopher Horne Tel: 01506 414244 Fax: 01506 497014 Email: thejamesyoung.hs@wled.org.uk
Linlithgow Academy Braehead Rd Linlithgow EH49 6EH	HT: David MacKenzie Tel: 01506 843211 Fax: 01506 848082 Email: linlithgow.ac@wled.org.uk
St Kentigerns RC Academy West Main St Blackburn EH47 7LX	HT: Stephen Campbell Tel: 01506 656404 Fax: 01506 651736 Email: stkentigerns.ac@wled.org.uk
St Margarets RC Academy Howden South Rd Livingston EH54 6AT	HT: James Cameron Tel: 01506 497104 Fax: 01506 497103 Email: stmargarets.ac@wled.org.uk
West Calder High School Limefield, Polbeth West Calder EH55 8QN	HT: Elaine Cook Tel: 01506 871510 Fax: 01506 871345 Email: westcalder.hs@wled.org.uk
Whitburn Academy Shanks Rd Whitburn EH47 0HL	HT: Ian Adair (Acting) Tel: 01501 740675 Fax: 01501 742724 Email: whitburn.ac@wled.org.uk

## Education Support Resources

Beattie School Campus The Mall, Craigshill Livingston EH54 5EJ	HT: Mary Currie Tel: 01506 777598 Fax: 01506 777594 Email: beattie@wled.org.uk
Burnhouse School The Avenue Whitburn EH47 0BX	HT: Liz Speirs / John Bell Tel: 01501 678100 Fax: 01501 678108 Email: burnhouse@wled.org.uk
Cedarbank Cedarbank, Ladywell East Livingston EH54 6DR	HT: Denise McPhail Tel: 01506 442172 Fax: 01506 436955 Email: cedarbank@wled.org.uk
Ogilvie School Campus Ogilvie Way, Knightsridge Livingston EH54 8HL	HT: Sharon Johnston Tel: 01506 777489 Fax: n/a Email: ogilvie@wled.org.uk
Pinewood Elm Grove Blackburn EH47 7QX	HT: Adele Green Tel: 01506 656374 Fax: 01506 650716 Email: pinewood@wled.org.uk
Willowgrove House 1/6 Willowgrove House Livingston EH54 8LU	HT: Liz Speirs / John Bell Tel: 01506 434274 Fax: 01506 432185 Email: willowgrove@wled.org.uk

## **Outreach Services (Education)**

Hearing Impaired Service  
Deans PS, Deans South, Deans, Livingston, EH54 8DB  
01506 418125 Fax 01506 419814  
Carole Torrance

**E.A.L. Service**  
Deans CHS, Eastwood Park, Livingston, EH54 8PS  
01506 497090 Fax 01506 497025  
Gail Hargreaves

**Literacy Resource**  
Boghall Primary School, Elizabeth Drive, Bathgate EH48 1JB  
01506 650384  
Jennifer Livingston  
Karen-Ann MacAlpine  
Technology Support  
ICT Curriculum Development Officer and SEN  
01506 777424 Fax 01506 777422

## **Outreach (Health)**

**Autism Outreach**  
Primary:  
Secondary: Denise McPhail 01506 442172

**Language Resource**  
Primary: Denise McPhail  
01506 436955

New to West Lothian (SN) Outreach Service 01506 777598

Occupational Therapy Needs  
Occupational Therapy Department West Lothian NHS Trust 01506 419666

Partnership with other Agencies

West Lothian NHS Trust 01506 419666  
West Lothian Social Work Department 01506 777333

Physiotherapy Needs  
Physiotherapy Department West Lothian NHS Trust 01506 419666

Pre Five Home Teaching  
Kay Ryan 01506 776112

Social Emotional Behavioural Needs (SEBN)  
Primary: Sharon Johnston 01506 777450  
Secondary: Margaret Gibson 01501 678108

Technology Support  
ICT Curriculum Development Officer and ALN  
01506 777424 Fax 01506 777422

## **PSYCHOLOGICAL SERVICE**

Ogilvie House  
Ogilvie Way, Knightsridge,  
Livingston, EH54 8HL  
01506 777462 Fax 01506 777486  
Doctor Laura Ann Currie

### **EDUCATION TRAINING & RESOURCE CENTRE**

West Lothian Education Centre  
Ogilvie House, Ogilvie Way, Livingston, EH54 8UL  
01506 777451 Fax 01506 777452  
Sheila Smith

### **ARTS UNIT**

Arts Unit  
Craigsfarm Campus, Maree Walk, Livingston, EH54 5BP  
01506 777585 Fax 01506 777590  
(vacancy)

Craigsfarm Community Development Project  
Craigsfarm Campus, Maree Walk, Livingston, EH54 5BP  
01506 777691 Fax 01506 777596  
(vacancy)

Howden Park Centre  
Howden, Livingston, EH54 6AE  
01506 433634 Fax 01506 434525

### **OUTDOOR EDUCATION**

Low Port Centre 01506 775390  
Blackness Road, Linlithgow, EH49 7HZ  
Fax: 01506 775399  
Mr George Thomson

### **SPORTS UNIT**

Sports Unit 01506 776295  
Balbardie Park, Bathgate, EH48 4LA  
Fax: 01506 776186  
Mr Charlie Raeburn

### **SPORTS CENTRES**

Bathgate Sports Centre  
Balbardie Park of Peace  
Torphichen Road  
Bathgate EH48 4LA  
01506 776790 Fax 01506 776784  
William Key

Craigswood Sports Centre  
Craigswood, Craigshill  
Livingston EH54 5ER  
01506 775870 Fax: 01506 775873  
William Key

Linlithgow Leisure Centre  
McGinley Way  
Linlithgow EH49 6SQ  
01506 775440 Fax: 01506 775458  
Lynda Binnie

Broxburn Sports Centre  
Church Street  
Broxburn EH52 2EL  
01506 775690 Fax: 01506 775693  
Eric Stafford

East Calder Sports Centre  
28 Raw Holdings  
East Calder EH53 0JN  
01506 883340 Fax; 01506 881753  
William Key

## SWIMMING POOLS

Armadale Swimming Pool  
North Street  
Armadale EH48 3QB  
01501 678520 Fax: 01501 678523  
John Duff

Broxburn Swimming Pool  
104 E Main Street  
Broxburn EH52 5EQ  
01506 775680 Fax: 01506 775685  
Eric Stafford

Linlithgow Leisure Centre  
McGinley Way  
Linlithgow, EH49 6SQ  
01506 775440 Fax: 01506 775458  
Lynda Binnie

Bathgate Swimming Pool  
78 Mid Street  
Bathgate EH48 1QD  
01506 774670 Fax: 01506 774674  
William Key

Bubbles Leisure Pool  
Almondvale Boulevard  
Livingston, EH54 6QT  
01506 777870 Fax: 01506 777891  
Kerry McMaster

Whitburn Swimming Pool  
77 West Main Street  
Whitburn EH47 0QD  
01501 678070 Fax: 01501 678076  
John Duff

## HALLS

Bellsquarry Community Hall  
Main Street, Bellsquarry  
Mrs Piercy 01506 410830

Burgh Halls, Linlithgow  
The Cross, High Street, Linlithgow  
01506 842572  
Letting Section 01506 776008

Fauldhouse Library Pavilion  
Main Street, Fauldhouse  
Letting Section 01506 776008

Kirknewton Village Hall  
Main Street, Kirknewton  
Mrs Ewing 01506 884454

Polbeth Village Hall  
Main Street, Polbeth  
01506 871034  
West Calder CC 01506 871278

Uphall Station Institute  
Marrfield Terrace, Uphall Station  
01506 432854  
Letting Section 01506 776008

Breich Village Hall  
Main Street, Breich  
Evelyn Russell 01501 770727

Chalmers Hall, Linlithgow  
Falkirk Road, Linlithgow Bridge  
01506 842744  
Letting Section 01506 776008

Harrismuir Bowling Pavilion  
Willowbank, Livingston  
01506 442182  
Joe McLelland 07743 021230

Longridge Village Hall  
School Lane, Longridge  
01501 770339  
Letting Section 01506 776008

Pumpherstons Institute  
Uphall Station Road, Pumpherston  
01506 431546  
Letting Section 01506 776008

## LIBRARIES

Headquarters  
Connolly House, Hopefield Road,  
Blackburn, EH47 7HZ  
01506 776336 Fax: 01506 776345  
Jeanette Castle

Public Reference Library  
Street Building, West Lothian College,  
Almondvale Crescent  
Livingston EH54 7EP  
01506 427601 Fax: 01506 409980  
Linda Hartley

Almondbank  
Craigshill Shopping Mall, Craigshill,  
Livingston, EH54 5EJ  
01506 777500  
Helen Dobie

School Libraries 01506 776334  
Based at Connolly House  
Helen Scott

Armadale  
West Main Street  
Armadale, EH48 3JB  
01501 678400  
Elizabeth Hunter

Bathgate Hopetoun Street Bathgate, EH48 4PD 01506 776400 Anne McIntosh/Margaret Armstrong (Job Share)	Blackburn Shopping Mall Blackburn, EH47 7LJ 01506 776500 Fiona Aitken
Blackridge Craig Inn Centre Blackridge, EH48 3SP 01501 752396 Moirra McCabe	Broxburn West Main Street Broxburn, EH52 5RH 01506 775600 Fax: 01506 856211 Gillian Gillespie
Carondean Carondean Centre Livingston EH54 8PT 01506 777602 Stephen Harris	East Calder Main Street East Calder EH53 0EJ 01506 772621 Gillian Downie
Fauldhouse Lanrigg Road Fauldhouse EH47 9JD 01501 772721 Marilyn James	Lanthorn Kenilworth Rise, Dedridge Livingston EH54 6NY 01506 777700 Gillian Downie
Linlithgow The Vennel Linlithgow EH49 7EX 01506 775490 Kay Ali	Pumpherston Pumpherston Primary School 18 Uphall Station Road Pumpherston EH53 0LP 01506 435837 Ruth Forsythe
West Calder Main Street West Calder EH55 8BQ 01506 772421 Gillian Gillespie	Whitburn Union Road Whitburn EH47 0AR 01501 678050 Sandra Valaitis (acting)

## PUPIL SUPPORT MANAGERS

School Name	
Armada Academy	Carol McDonald
Bathgate Academy	Ellis McKay
Broxburn Academy	Linda Brough
Deans Community High School	Anne Craig
Inverlmond Community High School	Catriona Scott
Linlithgow Academy	Jack Laurie
St Kentigern's Academy	David Glencourse
St Margaret's Academy	Winifred McCall
The James Young High School	Gillian Spence
West Calder High School	Lisa Lorimer
Whitburn Academy	Paula Allison

Senior Education Development Manager – Mary Rankine

Education Officer Outreach Services  
Kay Ryan

Principal Support Officer  
Alison Raeburn

Principal Psychologist  
Liz Gajjar

## **Education Support Services**

Lindsay House, South Bridge Street, Bathgate, EH48 1TS

01506 776110 / 01506 776394

mary.rankine@westlothian.gov.uk

Mary Rankine, Senior Education Development Manager

### **Summary**

- to secure adequate and efficient educational provision for children and young people with additional support needs (including those with additional educational needs, a disability, high achievers and those for whom English is an additional language)
- to ensure that education provided is directed to the development of the personality, talents and mental and physical abilities of the child to their fullest potential and a presumption that education will be provided in a mainstream school.
- Education support services provides a range of additional support to children and young people with additional learning needs, including:
  - o services for visually and/or hearing impaired pupils
  - o psychological services
  - o English as an additional language
  - o hospital and home teaching services
  - o support for learning teachers
  - o specialist provision for pupils with learning difficulties, social, emotional and behavioural needs or severe and complex needs

Through partnership with other agencies, there is also provision of:

- speech and language therapy
- occupational therapy
- physiotherapy
- social work

**Family Mediation Lothian**  
207 West Main Street, Whitburn EH47 0LP  
01501 749780  
Fax: 01501 745094  
fmwestlothian@btconnect.com  
lothian@familymediation.freeserve.co.uk

Family Mediation Lothian aims to prevent damage resulting from family break-up, principally emotional damage to children and young people, by:

- providing information and advice to separating parents
- working with the courts and solicitors to make mediation a ready alternative
- bringing together parents with a trained mediator to achieve agreement on future parenting
- providing centres where parents can enjoy contact with their children
- providing 'surviving the break-up' groups for recently separated people
- providing individual and group support for children

Service covers Edinburgh City, East, Mid and West Lothian.

Director: Carol Barrett  
West Lothian Area Manager: Eleanor Higgins

#### **Other locations**

37 George Street  
Edinburgh  
EH2 2HN  
Tel: 0131 226 4507  
Fax: 0131 220 4324

## **Family Protection Unit**

F Division, Lothian and Borders Police

Bathgate Police Station,

South Bridge Street, Bathgate, EH48 1TL

01506 652615 (Direct Dial)

01506 652323 or via Divisional Headquarters 01506 431200

Firstname.lastname@lbp.pnn.police.uk

### **The Service**

The unit is responsible for the investigation of all allegations relating to sexual offences, reported within West Lothian, reporting of youth offending and child protection issues to the Scottish Children's Reporter's Administration, liaison with victims of Domestic Abuse and appropriate support agencies, monitoring of sex offenders and investigation of reported missing persons.

### **Statutory duties:**

- Investigation of allegations relating to sexual offences
- report findings, following investigation to the Procurator Fiscal and the Scottish Children's Reporter's Administration, where appropriate
- liaise with and provide reports to the Scottish Children's Reporter's Administration regarding youth offending and child protection issues;

### **Domestic Abuse Liaison Officer:**

Anne Robertson

01506 656023

Deals with victims of Domestic Abuse to give them advice and support about criminal proceedings and other agencies that can assist.

### **Sex Offender Assessment Officers:**

Murdo Stewart and Frances Faulds

01506 445344 – based at Livingston Police Station

Deal with the perpetrators and monitor them through the registration period, and makes risk assessments of their conduct in the community.

### **Service Structure**

Detective Inspector John McKenzie has line management responsibility for all detective officers and liaison officers based within the Family Protection Unit. Overall responsibility for the FPU lies with Detective Chief Inspector Keith Anderson.

Details of all police stations within West Lothian are contained below. Whilst FPU officers are based at Bathgate, contact can be made via any of the police station referred to below.

## Police Stations

### Armadale

69/71 West Main Street  
Armadale EH48 3PZ  
Tel: 01501 730219

### Livingston

Divisional Headquarters  
Almondvale South  
Livingston EH54 6PX  
Tel: 01506 431200

### Bathgate

South Bridge Street  
Bathgate, EH48 1TL  
01506 652323

### West Calder

9 East End  
West Calder EH55 8RF  
Tel: 01506 871218

### Broxburn

West Main Street  
Broxburn EH52 5LJ  
Tel: 01506 852121

### Whitburn

West Main Street  
Whitburn EH47 1LR  
Tel: 01501 740222

### Linlithgow

High Street  
Linlithgow EH49 7EQ  
Tel: 01506 843235

## First Steps Playgroup

Beatlie School Campus, The Mall, Craigshill,  
Livingston EH54 5EJ  
01506 777883

### Summary

First Steps operate a playgroup for pre-school children with special needs in the Beatlie Campus, Craigshill, Livingston. It has registered charitable status.

## Homeaid West Lothian

Homeaid West Lothian  
12-14 Gideon Street, Bathgate EH48 4HD  
01506 652230  
Contact: Jackie Agnew MBE  
[home\\_aid@btconnect.com](mailto:home_aid@btconnect.com)

### Summary of role

Recycle donated furniture for homeless and low income families and individuals at low cost

### Service Structure

Co-ordinator responsible to management committee

**Home-Start West Lothian**  
37a McLeod Street, Broxburn EH52 5BN  
01506 854529  
homestartwl@lineone.net

### **Summary of role**

Home-Start offers a unique service. We recruit and train volunteers who are usually parents themselves to visit families at home who have at least one child under 5 and offer them informal, friendly and confidential support which can be practical and/or emotional, for example help getting the family out and/or being a 'listening ear'. Home-Start schemes are rooted in the communities they serve. They are managed locally but supported by the national organization, which offers direction, training, information and guidance to schemes and ensures consistent and quality support for parents and children wherever they are. Home-Start West Lothian's volunteer befrienders offer support to families throughout the whole of West Lothian.

### **Service Structure**

Voluntary organisation and registered charity. Each Home-Start scheme has a Management Committee who employ staff. We have one full-time Senior Co-ordinator, one part-time Co-ordinator and one Administration Assistant. We recruit and train volunteers to support families.

### **Staff Team**

1 Senior Co-ordinator (37hours)  
1 Co-ordinator (32 hours )  
1 Admin Assistant (25 hours)

The scheme's core funding is from West Lothian Council via the Sure Start budget. Funding for the part-time Co-ordinator's post comes from the Big Lottery via the Community Fund. Funding for the 2<sup>nd</sup> Co-ordinator's post is via a Big Lottery tapered development grant and match funding from Lloyds TSB Foundation for Scotland until October 2007 and a further grant from the Robertson Trust until October 2008.

## **Includem Hopetoun Street Hostel**

64 Hopetoun Street, Bathgate EH48 4PD

Tel: 01506 655216

Fax: 01506 655216

[adele.thomson@includem.co.uk](mailto:adele.thomson@includem.co.uk)

### **Summary**

Hopetoun St Hostel provides temporary homeless accommodation and support to four young people aged 16-22. Each tenant has a support package agreed and Includem staff work closely with case managers to ensure the young person's individual support plan is implemented.

Referrals for placement should be made through the Throughcare-Aftercare Team or Youth Housing Support Team.

### **Structure**

The hostel is operated by Includem and is supported by funding from Social Policy Children & Families and Supporting People.

## **Kiln House**

34 Kirkfield West, Livingston Village, Livingston EH54 7BE

Tel: 01506 414807

Fax: 01506 591726

[firstname.lastname@westlothian.gov.uk](mailto:firstname.lastname@westlothian.gov.uk)

Manager: Willie Hunter

### **Summary**

Kiln House provides residential care and support to four young people aged 16-17. Each young person has a key worker and staff work closely with Practice Team colleagues and partner agencies in providing an individualised care plan which is reviewed through the LAC review process.

Referrals for a placement should be made to the Resources Group which meets weekly.

### **Structure**

The centre is part of Social Policy and is line managed by Jim Logue, Group Manager (Looked After Children)

## **Letham Young People's Centre**

Letham Road, Craigshill, Livingston EH54 5NX

01506 777313 Fax 01506 777310

firstname.lastname@westlothian.gov.uk

Manager: Willie Hunter

### **Summary**

Purpose-built in 2007, Letham Young People's Centre provides residential care and support to six young people. Each young person has a key worker and staff work closely with Practice Team colleagues and partner agencies in providing an individualised care plan which is reviewed regularly through the LAC review process.

Referrals for a placement should be made to the Resources Group which meets weekly.

### **Structure**

The centre is part of Social Policy and is line managed by Jim Logue, Group Manager (Looked After Children)

## **Livingston Family Centre**

5 Jackson Place, Eliburn, Livingston EH54 6RH

01506 775775 Fax 01506 775779

firstname.lastname@westlothian.gov.uk

[www.livingstonfamilycentre.org.uk](http://www.livingstonfamilycentre.org.uk)

Manager: Willie Evans

### **Summary**

Livingston Family Centre offers a range of assessment and support services to families with young children, including playroom-based group care, outreach support within the family home and groupwork programmes for parents. Each family has a qualified Nursery Officer as key worker and an individual care plan which is reviewed regularly.

The family centre is co-located with Eliburn Nursery Class, an annexe of Inveralmond Early Years Centre. The centre has its own health visitor available on-site part-week and receives visiting support from community health and other agencies to provide a multi-agency approach. The centre also has dedicated Special Care Nursery Officers for children who require additional support.

The centre serves the east side of West Lothian and referrals for a service should be made to the Early Years Services Group, administered by Sure Start.

The Early Years Outreach Service, serving all of West Lothian, operates from the centre.

### **Structure**

The centre is part of Social Policy and is line managed by Rosemary Howe, Group Manager (Specialist Services)

## **Looked After Children Team**

West Lothian House, Almondvale Boulevard,  
Livingston EH54  
firstname.lastname@westlothian.gov.uk

### **Summary**

The Looked After Children Team comprises a Senior Educational Psychologist, 3 outreach teachers for primary and secondary pupils, Children's Rights Officer, Young Person's Development Worker and LAC Nurse. The team provides a range of support to frontline providers of services to looked after children.

The Young Person's Development Worker oversees the Youth Inclusion Project and PACE (Physical Activity for Confidence and Esteem) project.

### **Contacts:**

Snr Educational Psychologist	Janet Guild	01506 777466
HYS Development Worker	Post Vacant	01506 777329
YP Development Worker	Karen Balfour	01506 777336
LAC Nurse	Avril Gardner	01506 777356
LAC Outreach Teachers	Caroline Meagher	01506 77

### **Structure**

The LAC team sits within the Social Policy structure which provides links to the professional line management within each agency.

## **Lothian Autistic Society**

66A Newhaven Road, Edinburgh EH6 5QB  
0131 554 9362  
office@lothianautistic.org

### **Summary**

Providing advice and support to families affected by autism spectrum condition. Services operating in West Lothian area include flexible respite scheme and play scheme in the Easter and summer holidays.

### **Service Structure**

Board of directors. Management committee. Development manager responsible for managing all aspects of society business on a day-to-day basis.

**NCH Scotland**  
Gilmerton Road Project,  
408 Gilmerton Road,  
Edinburgh EH17 7JH  
0131 672 1702

### **Summary**

Provision of the following services in partnership with social work and health services within Lothian:

- short breaks
- outreach
- assessment
- emergency provision
- psychological services (for families affected by learning disabilities)

Referrals received from West Lothian.

NCH is a national organisation with around 500 projects, covering a range of family-related services. Gilmerton Road is one of these. NCH also has overseas projects. NCH has no offices in West Lothian.

### **Other offices / locations**

NCH Scotland (Head Office for Scotland)  
17 Newton Place  
Glasgow  
G3 7PY  
0141 332 4041

## **NHS Lothian - West Lothian CHCP Children's Services**

Strathbrock Partnership Centre,  
189a West Main Street Broxburn, West Lothian EH52 5LH  
01506 771841  
doreen.trainor@wlt.scot.nhs.uk

### **Summary**

Provision of integrated Children's and Young Peoples Services between Primary Care, Community and acute/secondary care services for the population of West Lothian

### **Service Structure**

Children's and Young People's Services are provided within Health Centres, Schools, other community settings, Children's Ward and out patient departments in St. John's Hospital and include the following services

- Acute Paediatrics
- Child Adolescent Mental Health Services
- Child Development Centre
- Child and Family Psychiatry
- Community Child Health
- Community Children's Nurses
- GPs and Primary Health Care Teams
- Health Visiting Services
- Obstetrics
- Psychology
- School Health – Main Stream and Special Schools
- Special Care Baby Unit
- Allied Health Professionals – Physiotherapists, Occupational Therapists, Speech Therapists, Podiatrists and Dieticians provide services to children within the hospital, community, school and home setting.

### **Responsibilities**

- Health and Wellbeing for all Children and Young People within West Lothian
- Promotion of Health and Prevention of illness
- Provision of health care services to children, young people and their families
- Primary, Community and Secondary care
- Child Health Surveillance Programme (pre school and school)
- Immunisation Programmes (pre school and school)
- School Health Service
- Children with Disability
- Child Protection
- Looked After and Accommodated Children

Within health services we aim to enhance the provision of seamless integrated services across the acute/community interface. There is a strong history of effective interagency working with other statutory and voluntary Agencies which are strengthened by the development of West Lothian Community Health & Care Partnership.

## Details of other offices / locations:

Community Child Health Dept  
St. John's Hospital  
School Health  
01506 524403  
Pre-School Administration  
01506 524424/27  
Office Manager  
Margaret Somerville  
01506 524405  
Consultant Paediatrician  
Dr. Helen Hammond  
01506 524412  
Clinical Medical Officer  
Dr. Joan Ritchie, Snr  
01506 524425

Susan McGill  
Paediatric Nurse Manager  
St Johns Hospital  
01506 524384

Louise Jarman  
Co-ordinator  
Child Development Centre  
Beattie Campus,  
Craigshill, Livingston  
01506 777584

Sister Lynn Haddow  
Children's Ward  
St. John's Hospital  
01506 524398

Doreen Trainor  
Chief Nurse  
Strathbrock Partnership Centre  
01506 771481

Dr. Susie Hume  
Dr. Leonie Boeing  
Consultant Psychiatrists  
Child and Family Psychiatry  
St. John's Hospital  
01506 523785

Community Children's Nurses  
St. John's Hospital  
01506 524382

Phil Harrison  
Head of Department  
Clinical Psychology  
St. John's Hospital  
01506 523799

## GP Practices Within West Lothian

### SOUTH-EAST LOCALITY

Ash Grove Medical Practice  
Health Centre, Ash Grove  
Blackburn EH47 7LL  
08444 770 954

Dedridge Medical Practice  
Health Centre, Nigel Rise  
Livingston EH54 6QQ  
01506 414586

Carmondean Medical Group  
Health Centre, Carmondean  
Centre  
Livingston EH54 8PY  
08444 77 3155

East Calder Medical Practice  
147 Main Street  
East Calder EH53 OEW  
01506 882882

Deans and Eliburn Medical  
Practice  
Health Centre  
Carmondean Centre  
Livingston EH54 8PY  
08444 773144

Howden Medical Practice  
Health Centre, Howden  
Livingston EH56 6TP  
01506 423800

Dr. Shah  
Health Centre, Carmondean  
Centre  
Livingston EH54 8PY  
08444 773166

Murieston Health Centre  
Health Centre, Hamilton Square  
Livingston  
01506 461464

Dr. Handley and Partners  
Health Centre, The Mall  
Craigshill, Livingston  
EH54 5DY  
01506 432621

West Calder Medical Practice  
Health Centre, Stewart Street  
West Calder EH55 8HB  
01506 871359

## GP Practices Within West Lothian

### NORTH-WEST LOCALITY

#### Armadale Group Practice

18 North Street  
Armadale EH48 3QB  
01501 730432

#### Newlands Medical Practice

Primary Care Centre, Whitburn  
Road  
Bathgate EH48 2SS  
01506 655155

#### Simpson Medical Practice

Primary Care Centre, Whitburn  
Road  
Bathgate EH48 2SS  
01506 654444

#### Kingsgate Medical Practice

Primary Care Centre, Whitburn  
Road  
Bathgate EH48 2SS  
01506 653134

#### Dr. Wood and Partners

Strathbrock Partnership Centre  
189a West Main Street, Broxburn  
EH52 5LH  
01506 771800

#### Dr. Gunn and Partners

Strathbrock Partnership Centre  
189a West Main Street, Broxburn  
EH52 5LH  
01506 771771

#### Dr. Ferguson and Partners

Strathbrock Partnership Centre  
189a West Main Street, Broxburn  
EH52 5LH  
01506 771700

#### Blackridge Health Centre

Health Centre, Fleming Place  
Blackridge EH48 3SS  
01501 751238

#### Dr. Ritchie and Dr. Jones

Health Centre, Blackfaulds Place  
Fauldhouse EH47 9AS  
01501 770282

#### Dr. Milne and Partners

Health Centre, Main Street  
Stoneyburn EH47 8BY  
01501 762515

#### Whitburn Medical Practice

Health Centre, Weavers Lane  
Whitburn EH47 OQU  
01501 740297

#### Linlithgow Medical Group

Health Centre, High Street  
Linlithgow EH49 7ER  
01506 670027

#### Linlithgow Family Practice

Health Centre, High Street  
Linlithgow EH49 7ER  
01506 670036

#### Winchburgh GP Practice

Health Centre, Niddry Road  
Winchburgh EH52 6RX  
01506 890737

## Health Centres with Attached Health Visitors

### SOUTH-EAST LOCALITY

Blackburn Ash Grove  
01506 654965  
*Alison Baxter*  
*Carol Denholm*

Carmondean, Livingston  
08444 773186  
*Bernadette McGuigan*  
*Emma Beattie*  
*Gail Connell*  
*Nancy Yuille*  
*Jane Nicholson*

Craigshill, Livingston  
01506 432621  
*Lesley Weir*  
*Trudi Starritt*  
*Alison Scholes*  
*Helen Boxall*

Dedridge, Livingston  
01506 414586  
*Marion Brown*  
*Linda Wilson*  
*Lynne Cooper*  
*Liz Marks*

East Calder Main Street  
01506 880582  
*Elsbeth Neilson*  
*Morag Park*  
*Margo Barr*

Howden, Livingston  
01506 423800  
*Irene Meldrum*  
*Lesley Hunt*  
*Jackie Hilton*

Murieston, Livingston  
01506 463347  
*Brenda Jones-Murty*

Polbeth Clinic, Polbeth Road  
01506 871274  
*Liz Lavelle*

West Calder Stewart Street  
01506 871359  
*Carole Middleton*

Inveralmond Early Years Centre  
01506 441907  
*Norma Martin*

Knightsridge Early Years Centre  
01506 444970 ext 228  
*Norma Martin*

## NORTH-WEST LOCALITY

**Armadale North Street**  
01501 730339  
*Gerry Connor*  
*Dana Crawford*  
*Mia Graham*

**Linlithgow High Street**  
01506 670044  
*Judy Rankin*  
*Lindsay Reagan*  
*Elaine Kirk*

**Bathgate Whitburn Road**  
01506 630771/2  
*Shona Russell*  
*Louise Boyd*  
*Lynn Smith*

**Stoneyburn Main Street**  
01501 762515  
*Joan Watson*

**Blackridge Fleming Place**  
01501 654965  
*Mia Graham*

**Whitburn Weavers Lane**  
01501 740719  
*Jean Lugton*  
*Alison Shaw*  
*Adrienne Campbell*

**Strathbrock Partnership Centre**  
189a West Main Street, Broxburn  
01506 771830  
*Maggie McNeil*  
*Mags Woodward*  
*Jill Douglas*  
*Heather Smith*

**Winchburgh Niddry Road**  
01506 891078  
*Aileen Morrison*  
*Margaret Morris*

**Fauldhouse Blackfaulds Place**  
01501 772038  
*George Hamill*  
*Karen McKeown*

**Whitdale Family Centre**  
55 Whitdalehead Road, Whitburn  
01501 744380  
*Sharon McCourtney*

Other health professionals providing services to children and young people within the above health centres include

- Community Midwives
- Community Psychiatric Nurses
- Treatment Room Nurses
- District Nurses
- Practice Nurses
- Allied Health Professionals
  - o Physiotherapists
  - o Speech and Language Therapists
  - o Dietician
  - o Podiatrists

## School Nurses within West Lothian

School Nurse Base Howden Health Centre  
01506 423800

### Team Leaders 01506 423800

Marilyn Woodhead  
Lorraine McLean

#### Armadale Academy

Beth Lockhart  
01506 423800

#### Bathgate Academy

Dorothy Fleming  
01506 423800

#### Broxburn Academy

Jackie Baggott  
01506 423800

#### Deans Community High School

Rosie Small  
01506 423800

#### Inveralmond Community High School

Vicki Jones  
01506 423800

#### James Young High School

Lorraine McLean  
01506 423800

#### Linlithgow Academy

Moyra Rodgers  
01506 423800

#### St. Kentigern's Academy

Marie MacNamee  
01506 423800

#### St. Margaret's Academy

Nighean Hanna  
01506 423800

#### West Calder High School

Marie Watt  
01506 423800

#### Whitburn Academy

Marilyn Woodhead  
01506 423800

## Specialist Provision

Nurses in Special Schools are based in Beattie Campus and Pinewood School.

Isobel Graham is the Lead Nurse for Children with Disability  
- 07709 400 758

<b>Beattie Campus</b> Craigshill, Livingston Isobel Graham Frances Turnbull Janet Cormack 01506 777598	<b>Cedarbank School</b> Cedarbank, Livingston Isobel Graham 01506 442172	<b>Pinewood School</b> Elm Grove, Blackburn Isobel Graham Irene McLean 01506 656374
---	---	--

## **Open Door Accommodation Project**

Unit U, Kirkton Business Centre

Kirk Lane, Livingston Village, Livingston EH54 7AY

Tel: 01506 203478 Fax: 01506 203184

Email: [susan.harcourt@odap.org.uk](mailto:susan.harcourt@odap.org.uk)

### **Summary**

#### **Hostel**

- Emergency accommodation for a period of up to 8 weeks in a 10-bedded residential unit for young people aged 16-21 years.
- The hostel is staffed 24 hours a day. Young people are allocated a key-worker who will work with them, in conjunction with a worker from the Young Adults Service Team (W.L.C.) to assess their emotional and practical needs and then work towards the goals of the resulting support plan.
- Help to access appropriate move-on accommodation, finding employment, training, education, as well as help and 'signposting' with a range of other issues. Help to access Health Services.

#### **Supported Flats**

- Supported accommodation living within the community, for single people between the ages of 16-21.
- Support, advice and advocacy.
- Help with access to longer term housing, finding employment, Health Services, training or education or to pursue other interests, as well as help and 'signposting' with a range of other issues.
- An allocated support worker, who will work towards a support plan.

#### **Tenancy Support**

- Flexible, practical and emotional support in the early stages of your tenancy, for young people aged 16-25.
- Help setting up your home.
- Help in maintaining your home.
- Support to help you to live independently in your home.
- Help to access appropriate employment, training, education, Health Services or to pursue other interests, as well as help and 'signposting' with a range of other issues.

#### **Service Structure**

- Director (vacant) responsible to voluntary Management Committee
- Operational Manager (Susan Harcourt) - responsible to Director
- Tenancy Support Manager (Audrey Heron) - responsible to Operational Manager
- Supported Flats Manager (Aileen Willmott) - responsible to Operational Manager
- Hostel Manager (Liz Wilkinson) - responsible to Operational Manager

## Locations

Open Door Supported Flats - Unit U, Kirkton Business Centre  
Kirk Lane, Livingston Village, Livingston EH54 7AY  
Tel: 01506 203478 Fax: 01506 203184  
[ailen.willmott@odap.org.uk](mailto:ailen.willmott@odap.org.uk)

Open Door Tenancy Support - Unit H, Kirkton Business Centre  
Kirk Lane, Livingston Village, Livingston EH54 7AY  
Tel: 01506 203478 Fax: 01506 203184  
[audrey.heron@odap.org.uk](mailto:audrey.heron@odap.org.uk)

Open Door Hostel - 7-12 Adelaide Street  
Craigshill, Livingston EH54 5HG  
Tel: 01506 430221 Fax: 01506 431185  
[liz.wilkinson@odap.org.uk](mailto:liz.wilkinson@odap.org.uk)

## **Residential Schools and Specialist Services**

West Lothian Council endeavours to ensure that all young people are educated locally. It is necessary, however, for some young people with complex care and education needs to be placed in a residential school and this list offers a brief overview and contact details of the schools used.

Decisions to place a child in residential school are made by senior management through the Resources Group and the Senior Officers Review Group (SORG), depending on the circumstances and needs of each child.

### RESIDENTIAL SCHOOLS

#### **BALLIKINRAIN SCHOOL**

Fintry Road, Balfron G63 0LL  
Tel: 01360 440244  
Fax 01360 440946  
[chrismcnaught@ballikinrain.org](mailto:chrismcnaught@ballikinrain.org)

Support to boys who have difficulty attending mainstream school. It was first registered on 1st April 2002, for a maximum of 36 boys aged 8 to 14.

#### **BALNACRAIG SCHOOL**

Fairmount Terrace  
Perth PH2 7AR  
Tel: 01738 636456  
Fax: 01738 441863  
[admin@balnacraig.net](mailto:admin@balnacraig.net)  
Manager: Ewen Matthew

Co-educational secondary providing education and residential care for 24 young people.

#### **CAMPHILL SCHOOL**

Murtle Estate  
Aberdeen AB15 9EP  
Tel: 01224 867935  
Manager: Manuela Costa Vincent

Rudolph Steiner school providing care accommodation service for young people aged 6 to 19 with complex special needs. 56 children and young people live within 11 house communities on two campuses.

#### **DALDORCH HOUSE SCHOOL**

Sorn Road  
Catrine KA5 6NA  
Tel: 01290 551666  
Fax: 01290 335599  
[janistoy@nas.org.uk](mailto:janistoy@nas.org.uk)  
Manager: Janis Toy

Daldorch House School is an independent co-educational school providing care and education for 40 pupils with an autism spectrum condition.

**DONALDSON'S COLLEGE**

Edinburgh EH12 5JJ  
Tel: 0131 337 9911

Donaldson's College provides education, accommodation and care to 29 children and young people of school age with hearing impairment.

**FALKLAND HOUSE SCHOOL**

Falkland KY15 7AE  
01337 857268 [davelaing@falklandhouseschool.org](mailto:davelaing@falklandhouseschool.org)

Education, care and support provided to 20 male pupils aged 11 to 16 years experiencing a range of problems, including psychological, emotional and behavioural difficulties, specific learning difficulties, ADHD, Aspergers Syndrome and Tourettes Syndrome.

**GEILSLAND SCHOOL**

Gateside Road  
Beith KA15 1HD  
Tel: 01505 504044  
Fax: 01505 502635  
[geilsland@crossreach.org.uk](mailto:geilsland@crossreach.org.uk)  
Manager- Chris McNaught

Residential special school offering education, care and social support for up to 35 boys aged 14 and 18 who experience educational, social, emotional and behavioural difficulties.

**GOOD SHEPHERD CENTRE**

Greenock Road  
Bishopton  
PA7 5PF  
01505 862 814

Good Shepherd Centre provides accommodation and care for 45 adolescent girls who have experienced social, emotional and behavioural difficulties.

**HARMENY SCHOOL**

Mansfield Road  
Balerno EH14 7JY  
0131 449 3938  
0131 449 7121  
[admin@harmeny.org.uk](mailto:admin@harmeny.org.uk)  
Manager: Peter Doran

Harmeny provides care and education to 32 primary school aged children who are experiencing social, emotional and behavioural difficulties.

**HILLSIDE SCHOOL**

3 Main Street  
Aberdour KY3 ORH  
01383 860731  
01383 860731  
[Smith\\_a@hillsideschool.co.uk](mailto:Smith_a@hillsideschool.co.uk)  
Manager- Michael Greenshields

School care accommodation service for 30 boys aged 11 to 16 years experiencing social, emotional and behavioural difficulties.

**Kibble Education and Care Centre**

1 Goudie Street  
Paisley  
PA3 2LH  
0141 889 0044  
[Graham.bell@kibble.org](mailto:Graham.bell@kibble.org)  
Manager: Graham Bell

Kibble Education and Care Centre is a residential school which provides care and education for up to 64 boys aged between 12 and 18 years who are experiencing educational, social, emotional and behavioural difficulties.

**Linn Moor School**

Aberdeen AB14 OPJ  
01224 732246  
01224 735261  
[Sharon.Napier@vsa.org.uk](mailto:Sharon.Napier@vsa.org.uk)  
Manager: Sharon Napier

Linn Moor School provides care and education to 26 young people with an autistic spectrum disorder/ learning disability.

**MOORE HOUSE CARE AND EDUCATION**

21 Edinburgh Road,  
Bathgate EH48 1EX  
01506 652312  
01506 652312  
Manager: Pat Sheridan

Moore House School is a co-educational privately owned school which provides education, accommodation, care and support to a maximum of 32 young people aged from 12 to 16 years who are experiencing social, emotional and behavioural difficulties.

**Nerston Residential School**

Nerston Village  
East Kilbride G74 4PD  
01355 279201355

Nerston School is managed by Glasgow City Council and provides education and care to 8 young people with social, emotional and behavioural difficulties.

**New School Butterstone**

Butterstone  
Dunkeld PH8 0HJ  
01350 724216  
01350 724283  
Manager: Andrew Wilson

Care and Education for 39 children from P7 to S6, the school works with young people that "educationally fragile"

**New Struan School**

Bradbury Campus  
Alloa  
FK10 1NP  
01259 222000  
01259 724239  
[Taylor@autism-in-scotland.org.uk](mailto:Taylor@autism-in-scotland.org.uk)  
Manager: Cathrine Strip

Struan House School provides education and residential care 27 for young people with autism spectrum conditions.

**Oakbank School**

Mid Stocket Road,  
Aberdeen  
AB15 5XP  
01224 313347  
01224 312017  
[Linda.Gerrard@oakbank.sch.uk](mailto:Linda.Gerrard@oakbank.sch.uk)  
Manager: Jane Arrowsmith

Oakbank School is a co-educational secondary school for young people aged 11 to 17 years, who are experiencing social, emotional and behavioural difficulties.

**Ochil Tower School**

140 High Street,  
Auchterarder  
PH3 1AD  
01764 662 416  
01764 662416  
[office@ochiltowerschool.org.uk](mailto:office@ochiltowerschool.org.uk)  
Manager: Hilary Ruprecht

Ochil Tower's curative education approach combines social care, education and therapy based on the philosophy of Rudolph Steiner. The school provides education and care for 28 children aged 5 to 18 years.

**Parkview School**

309 Blackness Road.  
Dundee  
DD2 1SH  
01382 667903  
[office@parkview-school.co.uk](mailto:office@parkview-school.co.uk)  
Manager: Ian Scanlin

Parkview School provides residential care and education for up to 24 boys aged 10 to 16 years experiencing social, emotional and behavioural difficulties.

**Royal Blind School**

Canaan Campus  
43-45 Canaan Lane  
Edinburgh  
EH10 4SG  
0131 446 3120

30 young people who have visual impairment and, or learning disabilities can be accommodated at the Canaan Campus.

<p><b>Royal Blind School</b>          Craigmillar Park          16 Craigmillar Park          Edinburgh          EH16 5PS          0131 667 1100  <a href="mailto:office@royalblindschool.org.uk">office@royalblindschool.org.uk</a></p>	<p>55 children and young people, who have visual impairment and, or learning disabilities can be accommodated at the Craigmillar Park campus.</p>
<p><b>Seamab School</b>          Rumbling Bridge          Kinross          KY13 OPT          01577840307          Manager: Anne Anderson</p>	<p>Seamab School is a co-educational primary school providing care and education for 15 children aged 5 to 13 years, experiencing severe social, emotional and behavioural difficulties.</p>
<p><b>Seafield School</b>          Ardrossan          01294 470355  <a href="mailto:Seafield.school@quarriers.co.uk">Seafield.school@quarriers.co.uk</a>          Manager: Eddie McCaffrey</p>	<p>Seafield School provides care and education to children and young people aged 7 to 17 years, who are experiencing social, emotional and behavioural difficulties.</p>
<p><b>Snowdon School</b>          31 Spittal Street          Stirling          FK8 1DU          01786 473449          01786 470383  <a href="mailto:Matthewssnowdon@aol.com">Matthewssnowdon@aol.com</a>          Manager: Graham Matthews</p>	<p>Snowdon School provides care and education to 18 girls aged 12 to 18 years, who have experienced social, emotional and behavioural difficulties.</p>
<p><b>Springboig St John's School</b>          1190 Edinburgh Road          Glasgow          G33 4EH          0141 774 9791  <a href="mailto:Bfitzgerald@sjsschool.co.uk">Bfitzgerald@sjsschool.co.uk</a>          Manager: William Fitzgerald</p>	<p>Springboig St John's provides care and education for up to 38 boys aged between 13 and 16.</p>
<p><b>St Phillips School</b>          Plains          Airdrie ML6 7SF          01236 755637  <a href="mailto:Paddy.Hanrahan@cora.org.uk">Paddy.Hanrahan@cora.org.uk</a>          Manager: Patrick Hanrahan</p>	<p>St Phillips School provides care and education to 38 boys aged 11 to 16 years.</p>
<p><b>Stanmore House School</b>          Stanmore House          Lanark          ML11 7RR          01555 665041          01555 665480</p>	<p>Owned and managed by Capability Scotland, providing education and care to young people with severe and complex special educational needs, learning difficulties and with physical and sensory impairment. Residential care is provided for up to 2 children and young people.</p>
<p><b>Starley Hall School</b>          Burntisland KY3 0AG          01383 860314          01383 860956  <a href="mailto:pb@starleyhallschool.co.uk">pb@starleyhallschool.co.uk</a>          Manager: Philip Barton</p>	<p>Starley Hall School provides care and education to 17 boys and girls aged 10 to 18 years.</p>

**SPARK OF GENIUS**

Riverside House  
Newmilns  
North Ayrshire  
KA16 9BU

Spark of Genius operates 3 units.

Riverside House and North Lodge House are for boys aged 10 to 14 years.

**SPARK OF GENIUS**

North Lodge House  
Adamton Estate  
Monkton  
KA9 2SQ

Davidson's Home and Farm accommodates girls aged 12 to 15.

Tel: 01560 323436  
[dsimmers@sparkofgenius.co.uk](mailto:dsimmers@sparkofgenius.co.uk)  
Manager: Debbie Simmers

**SPARK OF GENIUS**

Davidson Home and Farm  
Davidshill Farm  
BY Dalry  
KA24 4JD

## RESIDENTIAL RESOURCES AND SPECIALIST UNITS

**Carolina Trust**

Carolina House trust  
Dundee  
DD1 4LS  
01382 202029

Provides short term respite care in critical situations.

**Care Visions**

Lockerbie  
DG11 2JL  
01576 204777

Care Visions provides short term residential care to children aged 6 to 16 years.

**Clannalba**

Edinburgh Road  
Biggar  
ML11 6HP  
08453009272

Clannalba is a respite and assessment centre for children with Autistic Spectrum Disorders.

**Closeburn Centre**

Closeburn  
Thornhill  
DG3 5HP  
01848 331352

The Closeburn Centre is an independent residential resource providing care and education for young people.

**Frontline Response Residential Service**

35 George Street  
Dumfries DG1 1EA  
01387 252254  
01387 262264

Residential care provision for boys and girls aged 10 to 18 years.

**Gladstone Child Care Ltd**

Gladstone Cottage  
Thornton  
KY1 4DP  
01592 775774

Provides residential care for 5 children aged 5 to 18 years.

**NCH Scotland Gilmerton Project**

Gilmerton Road  
Edinburgh EH17 7JH  
0131 672 1702  
[Barbara.wright@nch.org.uk](mailto:Barbara.wright@nch.org.uk)  
Manager: Barbara Wright

Provides respite care for children aged 5 to 19 years with significant learning difficulties and challenging behaviours.

**Seaview Children's Unit**

Seaview House  
Edinburgh EH15 2LT  
0131 669 7490

Seaview Children's unit provides planned, short-term respite care for children and young people aged between 5 and 16 years who have specialist and complex needs.

**Southfield**

Southfield House  
Falkirk  
FK1 3BB  
01324 851336  
01324 850116  
[enquiries@southfieldhcs.com](mailto:enquiries@southfieldhcs.com)  
Manager: Anita Thomson

Southfield House provides residential care for 10 children and young people aged 12 to 22 years with Autistic Spectrum Disorders.

**Strathallan-Slamannan**

Falkirk  
FK1 3BB  
01324 851110  
01324 850800  
[enquiries@southfieldhcs.com](mailto:enquiries@southfieldhcs.com)  
Manager: Caroline Shephard

Provides respite care for children with Autistic Spectrum Disorders.

**Sycamore Services**

103 Veronica Crescent  
Kirkcaldy  
01592 592123

Veronica Crescent is part of the Aberlour Childcare trust and provides residential care for children aged 10 to 13 years.

**Sycamore Services**

Bellyeoman  
Dunfermline

Bellyeoman provides residential care for children aged 5 to 12 years.

**Sycamore Services**

Cedar  
16 Cedar Avenue  
Kirkcaldy  
KY1 2LP  
01592 592122

## SECURE ACCOMMODATION

**Edinburgh Secure Services**

39 Howdenhall Road  
Edinburgh  
EH16 6PG  
0131 664 8488  
[Frank.Phelan@howdenhall.edin.sch.uk](mailto:Frank.Phelan@howdenhall.edin.sch.uk)  
Manager: Frank Phelan

**The Elms Close Support**

Dundee DD2 2RT  
01382 36730  
01382 436742  
[Alexis.Fitzgerald@dundeecity.gov.uk](mailto:Alexis.Fitzgerald@dundeecity.gov.uk)  
Manager: Alexis Fitzgerald

**Good Shepherd Secure Unit**

Greenock Road  
Bishopton  
PA7 5PF  
01505 864500  
01505 864167

**Kibble Safe Centre**

Goudie Street  
Paisley  
PA3 2LG  
0141 889 0044  
0141 887 6694

**Rossie Secure Accommodation Services**

Montrose  
DD10 9TW  
01674 820204  
[Richard.murray@rossieadmin.org.uk](mailto:Richard.murray@rossieadmin.org.uk)  
Manager: Richard Murray

**St Mary's Kenmure**

St Mary's Road  
Bishopbriggs  
G64 2EH  
0141 586 1200  
[Nsharpe@stmaryskemure.org.uk](mailto:Nsharpe@stmaryskemure.org.uk)  
Manager: Neil Sharpe

**St Phillips Secure Unit**

Main Street  
Plains  
Airdrie  
ML6 7SF  
01236 439200

## **Reviewing Officers Team**

West Lothian House, Almondvale Boulevard,  
Livingston EH54 6QG  
firstname.lastname@westlothian.gov.uk

### **Summary**

Reviewing Officers provide independent administration and chairing of LAC reviews and Child Protection Case Conferences. They are:

Carol Donnachie	01506 777120
Anne Thomson	01506 777338
Katy Potts	01506 773802

### **Structure**

The Reviewing Officers Group is part of Social Policy.

## **Save the Children**

2nd floor, Haymarket House  
8 Clifton Terrace, Edinburgh EH12 5DR  
0131 527 8222  
j.sperber@savethechildren.org.uk

### **Summary**

In addition to its direct work with children and young people, Save the Children in Scotland offers a range of training sessions for voluntary agencies, local councils, schools (teachers) and university courses for education and social work. These courses are described in a series of Training Folders available from Save the Children. The courses are:

- Children's Rights,
- Children's Rights in a wider context of Human Rights,
- Promoting Participation in Children's Services and
- Training on re:action Consultation Toolkit.

In addition to this, new courses include a one-day generic training course in equality and a training based on the publication 'Spice It Up', which offers tools and techniques for youth participation and consultation.

### **Service Structure**

Save the Children does not do any long term work with children and young people in West Lothian. However, training courses are available to staff in West Lothian.

## **Scottish Adoption Association**

161 Constitution Street, Edinburgh EH6 7AD

0131 553 5060

[info@scottishadoption.org](mailto:info@scottishadoption.org)

[www.scottishadoption.org](http://www.scottishadoption.org)

### **Summary**

We are a registered adoption agency providing information, counselling and support to anyone who has adopted, has been adopted or is interested in adoption. Services include:

- recruiting, preparing and supporting adoptive parents and permanent foster families
- confidential counselling, information, advice and support to adopted adults
- information, counselling and support to anyone considering adoption for their child or expected baby and to birth parents of children adopted

### **Service Structure**

Services are generally available to people living in the Lothians (or within 60 miles of Edinburgh for prospective adoptive parents). There are no offices in West Lothian.

## **Scottish Children's Reporter**

### **Administration**

Edinburgh Road, Bathgate, West Lothian, EH48 1BA

01506 632741

### **Summary**

Children and young people can be referred to the Reporter by anyone who has concerns for the child's safety, welfare or behaviour. The Reporter has a legal duty to consider the referral and decide if a children's hearing is required. The children's hearing will decide if a legal order (a supervision requirement) should be made to assist the child.

### **Service Structure**

The Authority Reporter manages the service for West Lothian, which is part of the East Region of the national administration. Individual Reporters in West Lothian deal with referrals arising in a particular geographical area.

## **Scottish Childminding Association (SCMA)**

7 Melville Terrace, Stirling FK8 2ND

01786 445377 Fax 01786 449062

[information@childminding.org](mailto:information@childminding.org)

[www.childminding.org](http://www.childminding.org)

### **Summary**

Scottish Childminding Association (SCMA) promotes childminding as a quality childcare service, through reaching our Vision and Key Priorities for childminding. These are:

- Raising the Profile of Childminding and the Work of the Association
- Improving the Quality of Childminding
- Recruiting and Retaining Quality Childminders

### **Service Structure**

SCMA national staff operate from our Head Office in Stirling; the Chief Executive, Director of Childminding Development and the Childminding Practice Development Team are based there. Head Office also houses three main departments: Project Services, Strategic Services and Marketing Services. These departments serve SCMA members and provide support to over 40 members of Project Staff and our Childminding Development Officers. The nationwide HELpline (open Monday to Friday 10.00am – 4.00pm, on 01786 449063) is operated by fully trained staff from Head Office.

## **Scottish Pre-school Playgroup Association**

SPPA Centre, 45 Finnieston Street, Glasgow G3 8JU  
0141 221 4148  
[www.sppa.org.uk](http://www.sppa.org.uk)

### **Summary**

The SPPA delivers support and guidance services to providers of pre-school education and childcare services, including all-day care groups, playgroups, parent and toddler groups and under-fives groups. Through membership, these groups access a variety of services including insurance, publications and advice on pre-school issues.

SPPA has a forty year track record of working with children and families, encompassing many of the most disadvantaged groups in Scotland, including families on low income, ethnic minority families and families affected by social or rural isolation. We work closely with parents, early years providers, the Scottish Government, regulators, local authorities and childcare Partnerships, as well as training providers and other organisations to support early education and childcare settings. We represent the interests of voluntary sector community based settings, providing input to national and local policy consultations and working groups.

### **Structure**

An elected Board of Directors, made up of volunteers from a range of different backgrounds, determines the policy on which SPPA operates and governs the operations of the organisation.

West Lothian is covered by the SPPA's Glasgow office at 111 Union Street, Glasgow G1 3TA, telephone 0141 227 3922.

## **Signpost**

Beatlie School Campus, Craigshill, Livingston, EH54 5EJ

Helpline: 01506 431 123

Office: 01506 431133

[enquiries@signpost-online.co.uk](mailto:enquiries@signpost-online.co.uk)

[www.signpost-online.co.uk](http://www.signpost-online.co.uk)

Signpost is a voluntary organisation (registered charity SCV32398) which offers information and support to families of young people (birth to 18 approx) who have additional support needs.

We offer a helpline, drop-in office, regular newsletter and website, a well-stocked library for parents and professionals as well as individually tailored information for enquirers. Open to families, carers and professionals who support them.

A 'one-stop shop' so that people do not have to phone around many different agencies.

Staff discuss and identify the needs of the whole family then put them in touch with the most appropriate support.

The majority of staff members are also parents of a child with special needs so families appreciate our understanding of their situation.

Informal emotional support is also offered.

Office hours:

Monday 9.30am - 4.00pm

Tues/Wed 9.00am - 5.00pm

Thursday 9.00am - 3.30pm

Friday 9.00am - 1.00pm

We have no other offices in West Lothian.

## **Social Care Emergency Team (SCET)**

Suite 11, West Lothian House

Almondvale Boulevard, Livingston EH54

01506 777401 / 02 Fax 01506 777404

**Emergency Services Manager: Lyn McLean**

### **Summary**

SCET offers a full range of social work services outwith office hours.

### **Service Structure**

The service is part of Social Policy and is line managed by Rosemary Howe, Group Manager (Specialist Services)

## **St. Andrew's Children's Society**

7 John's Place, Edinburgh EH6 7EL

0131 454 3370

[info@standrews-children.org.uk](mailto:info@standrews-children.org.uk)

[www.standrews-children.org.uk](http://www.standrews-children.org.uk)

### **Summary**

St Andrew's Children's Society is a voluntary adoption agency based in Edinburgh and operating within a 60 mile radius of the city. We provide permanent and temporary homes through Fostering and Adoption for children from all sections of society irrespective their of religious, ethnic and cultural backgrounds.

**ADOPTION** - We place children with adoptive families when it is clear that they can not be cared for by their birth families. These children range in age from 0 to about 10 years of age.

**FOSTER CARE** - There are many children for whom adoption may not be the plan but who need to be cared for by families other than their birth families. This could be for short periods in order to see if a child could return to their birth family or it could be until the child becomes an adult.

**RESPITE FOSTER CARE** - We have approved Respite Carers who take children into their homes at regular intervals to give them and their families a break.

**POST-ADOPTION COUNSELLING** - Many of the adoptive families we place children with require ongoing contact and support. We also have regular contact from adults who were adopted as children and want to talk about their adoptions or to find out more about the circumstances of their adoption and may even wish to trace birth family relatives.

A number of birth parents and birth siblings contact us to enquire about a relative who was adopted and, although limited in what we can do for such people, we can offer an understanding and empathy in our counselling work with them.

**PREGNANCY COUNSELLING** - The focus on this counselling work is to help pregnant women consider the best course of action for them and their child.

### **Service Structure**

President:	Cardinal Keith O'Brien
Chairperson:	Maureen McEvoy
Director:	Stephen Small
Service Manager:	Charlie Egan

## **Sure Start**

Unit G, Kirkton Business Centre, 1 Kirk Lane

Livingston Village EH54 7AY

01506 775836 Fax 772839

surestart@westlothian.gov.uk

www.wlcsurestart.org.uk

**Manager: Paula Huddart**

### **Summary**

The aim of Sure Start is to give very young children (from pre-birth to 3 years) the best possible start in life by working closely with parents and health, voluntary and local authority services to provide a cohesive service to parent and child in a non-stigmatising way.

### **Services offered:**

- local groups which aim to improve parent-child interaction through play and provide advice and support to parents in furthering children's development
- group work for those at risk of social exclusion, through e.g. mental or physical ill health, domestic violence, drug or alcohol misuse, minority groups and looked after children
- individual support to parents to enable them to develop parenting skills and to access other support services
- career development advice for parents

### **Service Structure**

Sure Start is part of Social Policy and is line managed by Rosemary Howe, Group Manager (Specialist Services)

## **Throughcare-Aftercare Team**

Ground Floor, Lammermuir House, Owen Square

Livingston EH54 6PW

Tel: 01506 773720

Fax: 01506 773761

firstname.lastname@westlothian.gov.uk

**Manager: JJ Walsh**

### **Summary**

The Throughcare Aftercare Team offers support and advice to all looked after young people aged 15–20 years in planning for their future.

Throughcare is the support offered to looked after young people, either living with family or in a residential or foster care placement. This may include:

- understanding what young people need and want
- health & well-being
- education, training & employment
- getting on with others
- having fun, hobbies and interests
- understanding & dealing with problems
- practical skills like cooking & budgeting
- making mistakes and learning from them

Aftercare is the support offered from the whole Local Authority when young people are no longer Looked After. Aftercare is offered if young people were looked after when reaching school leaving age. We have a duty to offer support up until the young person's 19th birthday, and, if needed, further support can be offered until your 21st birthday.

### **Service Structure**

TCAC is part of Social Policy and is line managed by Jim Logue, Group Manager (Looked After Children) who also serves as Lead Officer: Throughcare-Aftercare.

## **Victim Support West Lothian**

15-19 Jarvey Street, Bathgate, EH48 4EZ

Tel & Fax: 01506 635050

vswl@btconnect.com

### **Summary**

Victim Support is a voluntary organisation providing a free, confidential and independent service to all victims of reported and unreported crime and those affected by crime.

- Emotional support
- Practical help
- Information on the Criminal Justice System
- Support at court
- Free assistance with Criminal Injuries Compensation claims and information on other sources of help.

Our services can be provided by means of a home visit, telephone contact or an office appointment.

### **Service Structure**

Victim Support West Lothian is a voluntary organisation run by an Area Management Committee. It is part of a National Organisation, affiliated to Victim Support Scotland. The area office is staffed by a part-time Area Co-ordinator plus a part-time Administrator.

The core hours are Monday - Friday 10.00am to 2.00pm and the frontline services are provided by a trained team of dedicated volunteers.

## **Voluntary Action West Lothian**

19 Jarvey Street, Bathgate, EH48 4EZ

01506 634115

info@vawl.org.uk

### **Summary**

Voluntary Action exists to provide support to local voluntary organisations. Some of the main services include:

- Funding Advice
- Support in the development of funding applications
- Advice on legal structures
- Information on Charity law
- Voluntary Sector Forum
- Newsletter
- Information Events
- Good Practice Guides
- Access to ICT
- Training Information
- New Deal
- Business Plan Development
- Organisational support.

### **Service Structure**

The service is based in Bathgate with outreach throughout West Lothian.

### **Voluntary Sector Overview**

In Scotland there are an estimated 50,000 voluntary organisations providing a wide range of services to a diverse client group and has an estimated income of over £2.62 billion annually which equates to 1.2 % of the annual turnover of the Scottish Economy. There has been increasing recognition of the strategic value of the voluntary sector not only as providers of services but also as a force for economic growth and social inclusion. The commitment of the Scottish Parliament to the value of the sector was underlined in February 2004 by the launch of the Scottish Compact which underpins the relationship between the Scottish Executive and the sector.

The West Lothian Voluntary Sector provides as diverse and vibrant a picture as the national perspective. There is in excess of 1,800 voluntary organisations in operation in West Lothian ranging from the small volunteer run group to large organisations delivering services which contribute both directly and indirectly to the local and national policy framework. Collectively the local sector has an income of in excess of £30 million per annum.

The sector locally has a key role to play in the following:

- Providing the first point of contact
- Service provider
- Referrer to mainstream services
- Key partner

The West Lothian organisations provide a diverse range of services to all parts of society including:

- Anti-poverty initiatives
- Children's Services
- Training
- Community Economic Development
- Counselling
- Environmental Initiatives
- ICT Training
- Mediation
- Regeneration
- Provision of information and advice
- Services for older people
- Services for people with disabilities
- Specialist support
- Training for Work
- Promotion of Social Inclusion

The sector has a key role to play in cross-sectoral working and cross-agency collaboration to respond to the complex needs of society, which often cannot be compartmentalised.

## **West Lothian Community Health and Care Partnership (CHCP)**

Strathbrock Partnership Centre, 189a West Main Street,  
Broxburn, West Lothian, EH52 5LH  
01506 775535

### **Summary**

West Lothian Community Health and Care Partnership was established in April 2005 to bring together a wide range of Health and Council services including children's services, community care, personal care, residential care, health improvement/promotion, continuing care, mental health, general practitioners, dentists, opticians, pharmacists, district nursing, learning and physical disabilities and health visiting.

The vision of the West Lothian CHCP is to develop an organisation that will further enhance and develop the delivery of integrated health and social care services to the people of West Lothian. The CHCP will operate for an initial two years and will be subject to independent evaluation and formal agreement to continue within this period.

### **Service Structure**

The work of the CHCP is governed by the Partnership Board which is made up of

Bob Anderson (Chair)	NHS Lothian
Jane Houston (Partnership rep)	NHS Lothian
Lesley Jamie	NHS Lothian
Dr Mike Boyle	NHS Lothian
Councillor Bruce Ferrie	West Lothian Council
Councillor Ellen Glass	West Lothian Council
Councillor John Cochrane	West Lothian Council
Councillor Janet Campbell	West Lothian Council

The CHCP Senior Management Team is made up of

David Kelly	Director
Grahame Blair	Head of Council Services
Jim Forrest	Head of Health Services
Doreen Trainor	Chief Nurse
Dr James Hendry	Acting Clinical Director
Robert Naysmith	Clinical Director (SPCDS)

## **West Lothian Drug & Alcohol Service**

43 Adelaide Street, Craigshill, Livingston, EH54 5HQ

01506 430225

[enquiries@wldas.org](mailto:enquiries@wldas.org)

### **Education Service**

Delivers sessions on drugs, alcohol, tobacco and sexual health in secondary schools throughout West Lothian. Tobacco education is also delivered in all primary schools. Sessions are also available to community groups, youth clubs and uniformed organisations.

### **Back on Track**

This service works with young people who are experiencing problems due to their own or a significant other's misuse of drugs or alcohol.

### **Cloud Nine**

Assists and supports vulnerable young people up to 21 who want to reduce or stop smoking.

### **Packit In**

This tobacco education and smoking cessation project works with young people, parents and staff who wish to address smoking issues in Inveralmond High School and Whitburn Academy and their feeder primaries.

### **Healthy Respect**

Runs five drop-in sexual health clinics for young people in Deans and The James Young Community High Schools, Whitburn Academy, Boghall Health Clinic and Strathbrock Partnership. Access to contraception and pregnancy testing are available.

### **Wise Up on Drugs**

Offers drug education to parents in their workplace.

All these services operate within Child Protection Guidelines.

For further information on the wide range of WLDAS services, contact Margot Ferguson, General Manager on 01506 430225 or 01506 446640.

## **West Lothian Women's Aid**

92 Ivanhoe Rise, Dedridge, Livingston EH54 6HZ  
01506 413721  
wlwomensaid@msn.com or cypwl@hotmail.co.uk

### **Summary**

To provide refuge, support and advice for women and any accompanying children fleeing from domestic abuse.

There are two designated children's worker who supports children and young people one of which is involved in outreach through referral. This is tailored to the child's needs and can be one - one, group work, outings and follow-on support.

### **Service Structure**

West Lothian Women's Aid operates as a collective and as such does not have a hierarchical structure. We have only one office in West Lothian, two refuges and four cluster houses and the staffing is comprised of one finance worker, one administration worker two children's workers, one cluster house worker and three refuge workers.

## **West Lothian Youth Action Project**

33 Aller Place, Eliburn, Livingston, West Lothian, EH54 6RF

01506 461588

office@wlyap.org.uk

### **Summary**

The project provides information, support and advice services to young people aged 10-21 throughout West Lothian. We particularly focus on young people that do not engage with other youth services. The project is a voluntary charitable organisation

Services provided include:

- A detached youth service
- Early Intervention work (offending)
- A befriending scheme
- Youth Forum work
- School work (challenging behaviour workshops, self esteem and confidence building etc)
- Internet Café facilities
- C. Card Service
- Drug and Alcohol Peer Education Programme
- Youth Consultation
- Active Steps (activity programme for those at risk of offending)

### **Service Structure**

Project Director – Helen Davis

The Project Director manages a team of 27 +and volunteers. The organisation is steered by a management committee including representatives from Social Work (Youth Crime), Lothian and Borders Police, Community Education, Local Councillors, The Royal Bank of Scotland, Ecumenical Church and other independent members.

### **Other Locations**

yacc.com - Internet Café located on the corner of Almondell Road and Strathbrock Place, Broxburn.

Open Monday 5.00-8.00pm

Wednesday 6.00 to 9.00pm

Friday 2.00pm until 5.00pm.

Wee Croft, Bents/Stoneyburn

Open Monday 6.00 to 9.00pm

Wednesday 6.00 to 9.00pm

Friday 2.00 to 5.00pm.

Detached youth work is carried out using a specially converted vehicle. This is located at specific venues throughout the region - for details of these please contact the project on 01506 461588.

## **Whitdale Family Centre**

Whitdale Early Years Centre  
55b Whitdalehead Road, Whitburn EH47 8JU  
01501 744380 Fax 01501 749220  
firstname.lastname@westlothian.gov.uk  
**Manager: Margo McCreight**

### **Summary**

Whitdale Family Centre offers a range of assessment and support services to families with young children, including playroom-based group care, outreach support within the family home and groupwork programmes for parents. Each family has a qualified Nursery Officer as key worker and an individualised care plan which is reviewed regularly.

The Family Centre is co-located with Whitdale Nursery School and Wraparound Care, together forming Whitdale Early Years Centre. The centre has its own health visitor available on-site part-week and receives visiting support from Community Health and other agencies providing a multi-agency approach. The centre also has a dedicated Special Care Nursery Officer for children who require additional support.

The centre serves the west side of West Lothian and referrals for a service should be made to the Early Years Services Group, administered by Sure Start.

### **Structure**

The family centre service is part of Social Policy and is line managed by Rosemary Howe, Group Manager (Specialist Services)

## **Whitrigg House**

Main Street, East Whitburn, Livingston EH54  
01501 74 Fax 01506 777310  
firstname.lastname@westlothian.gov.uk  
**Manager: Wendy Milne**

### **Summary**

Whitrigg House provides residential care and support to four young people aged 16-17. Each young person has a key worker and staff work closely with Practice Team colleagues and partner agencies in providing an individualised care plan which is reviewed through the LAC review process.

Referrals for a placement should be made to the Resources Group which meets weekly.

### **Structure**

The centre is part of Social Policy and is line managed by Jim Logue, Group Manager (Looked After Children)

## **Who Cares? Scotland**

1st Floor, Oswald Chambers, Glasgow G1 4QR  
0141 226 4441  
[enquiries@whocaresscotland.org](mailto:enquiries@whocaresscotland.org)  
[www.whocaresscotland.org](http://www.whocaresscotland.org)

### **Summary**

Who Cares? Scotland provides advocacy, support and information for young people in residential care, foster care and residential schools. We act as a voice for young people and campaign for change.

### **Service Structure**

Director - Deirdre Watson.

Who Cares? Worker      Ray MacLean 07787 560471

Manager                      Janice Watson 07793 447251

Dundee sub-office  
11 Castle Street, Dundee DD1 3AA  
01382 202888 Fax: 01382 202889

Kilmarnock sub-office  
28-30 Grange Street, Kilmarnock KA1 2DD  
01563 573015 Fax: 01563 573122

Edinburgh sub-office  
c/o BAAF, 40 Shandwick Place, Edinburgh  
0131 226 7403 Fax: 0131 226 3778

## **Wraparound Care**

Education Services, Lindsay House, South Bridge Street,  
Bathgate, EH48 1TS  
01506 776127  
[chis@westlothian.gov.uk](mailto:chis@westlothian.gov.uk)  
[www.scottishchildcare.gov.uk](http://www.scottishchildcare.gov.uk)

### **Summary**

To provide childcare alongside pre-school education, for three and four year olds, and for children in Primary 1-3, where space permits. Wraparound care is available in eleven locations.

Further information is available from Irene McInnes at the Childcare Information Service on 01506 776660 or at the above website.

### **Service Structure**

The service is managed by the Head Teachers of the schools concerned, with an Education Officer based in Lindsay House being responsible for policy development.

## **Youth Justice Family Support Team**

2a Shiel House, Shiel Walk, Livingston EH54 5EH

01506 774085

firstname.lastname@westlothian.gov.uk

Manager: Bobbie Miller

### **Summary**

The Youth Justice Family Support Team offers an integrated flexible service to Young People and their families to reduce Youth Offending across West Lothian. The team works closely with its partners particularly the Reporter to the Children's Hearing, Police, Education and the voluntary sector to divert Young People from the Children's Hearing System. We seek to identify at an early stage young people whose behaviour is causing concern as well as working with persistent offenders and young people 16 to 18 years who are in the Criminal Justice System.

### **Service Structure**

The service is part of Social Policy and is line managed by Jim Logue, Group Manager (Looked After Children)

## **YWCA Livingston**

31 Canberra Street, Craigshill, Livingston EH54 5HA

01506 432911

Fax: 01506 439708

livingstonywca@care4free.net

### **Summary**

YWCA Livingston aims to enable women, particularly those under 30, to develop their full potential and participate at all levels of society. It does this by providing education, information and advice to girls and women in the Livingston area.

We offer:

- Drop-in service
- Information and advice on issues such as housing, health,
- Educational opportunities and career development
- Summer playscheme for children aged 5 - 12 years
- Young mothers group
- Young women's group for 16 - 19 year olds
- Girls clubs
- Volunteering opportunities

