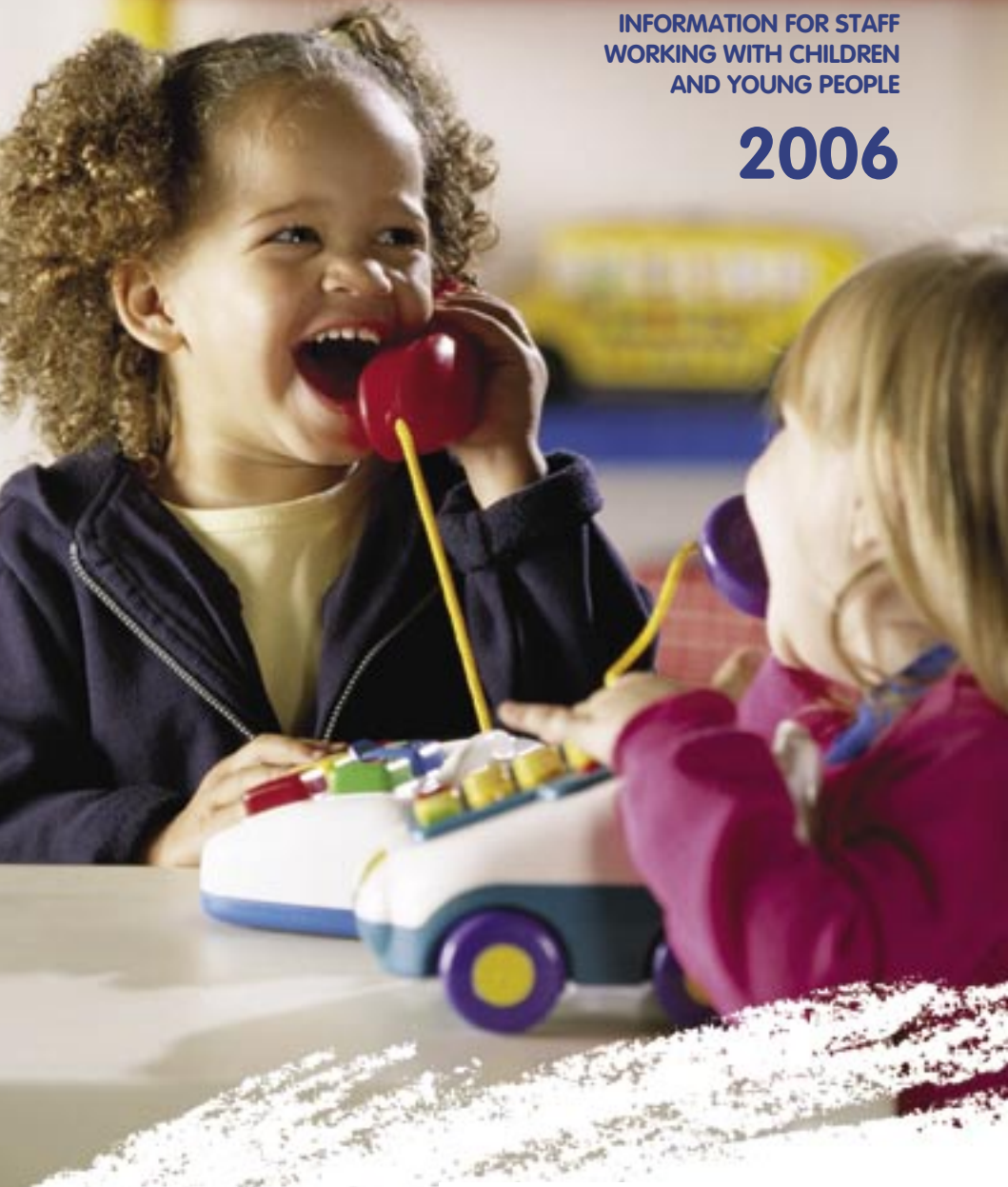


Services Directory

INFORMATION FOR STAFF
WORKING WITH CHILDREN
AND YOUNG PEOPLE

2006



**INTEGRATING
SERVICES FOR WEST
LOTHIANS CHILDREN**



WEST LOTHIAN CHILDREN'S SERVICES MANAGEMENT GROUP



Index

Introduction	3
How to Use the Directory	4
Alphabetical List of Children’s Services	
Barnardo’s Family Assessment and Support Service	6
Barnardo’s Lighthouse	7
Barnardo’s Skylight	8
Barnardo’s West Lothian Family Support Team	9
Blackburn Family Centre	10
Broxburn Family and Community Development Centre	11
Carers of West Lothian	12
Childcare Information Service	13
Child Disability Service.....	14
Children and Families Social Work	
- <i>Overview</i>	15-16
- <i>Useful Contacts</i>	17
Community Learning and Development Service	
- <i>Overview</i>	18
- <i>Useful Contacts</i>	19-25
Couple Counselling Lothian	26
COZ	27
Edinburgh & Lothian Council on Alcohol	28
Education Development and Quality Assurance	29
Education Establishments.....	30-46
Education Support Services.....	47
Family Mediation Lothian	48
Family Protection Unit	49-50
First Steps Playgroup.....	51

Hearth Project.....	52
Homeaid West Lothian.....	53
Home-Start West Lothian.....	54
Integrated Children and Young People Support Teams	55
Lothian Autistic Society.....	56
NCH Scotland.....	57
NHS Lothian - West Lothian Community Health & Care Partnership Children's Services	
- <i>Overview</i>	58-59
- <i>Useful Contacts</i>	59-65
Open Door Accommodaton Project.....	66
Save The Children.....	67
Scottish Adoption Association	68
Scottish Children's Reporter Administration	69
Sign Post	70
Sure Start.....	71
Victim Support West Lothian.....	72
Voluntary Action West Lothian	73
Voluntary Sector Overview.....	74
West Lothian Community Health & Care Partnership (CHCP)	75
West Lothian Drug & Alcohol Service.....	76
West Lothian Women's Aid	77
West Lothian Youth Action Project	78
Who Cares? Scotland.....	79
Wraparound Care	80
YWCA Livingston	81

Introduction

'For Scotland's Children' (October 2001) described the lives of children across Scotland and urged better integrated working. The main areas for improvement in the report were listening to young people, easier access to services and working and learning together. The multi-agency West Lothian's Children's Services Management Group programme has been set up in order to promote more joint working, more co-location of services and more training together on areas of common interest.

In West Lothian, the Children's Services Plan for 2005/08 outlines how we aim to improve services for children, young people and their families. The plan covers all services for all children in West Lothian. It has been jointly prepared drawing on consultations with young people and their families, representation from various groups and parents, and a wide range of people working in children's services including local authority, health, police, Reporter's Administration and voluntary services.

As a new member of staff in children's services in West Lothian, no matter what type of organisation you work for, or service you provide, your help is needed in making sure the plan becomes a reality.

You can do this by joining all our existing staff in working in partnership to deliver best quality services for children, young people and their families. To help you, this pack has been prepared to inform you about all the relevant services and how to contact them, should you need to get advice or information or make a referral.



How to use the pack

The pack has been prepared from information provided by services. The pack lists each service alphabetically, giving a brief summary of contact details and the role and structure of the service. Where appropriate, this is followed by a list of other locations for the service, for example health centres, educational establishments etc.

Leaflets have been provided by some organisations, either in addition to or instead of summary information.

For general information on services in West Lothian visit www.wlonline.org

Acknowledgements

Thanks to all services for their contributions to the pack.

Alphabetical list of children's services



Barnardo's Family Assessment and Support Service

6-8 Hazel Grove, Livingston, West Lothian, EH54 5JW
01506 438666
fass@barnardos.org.uk

Summary of role of service and/or statutory duties (if any)

Work with children aged 11 years and under and their families.

- Assessment
- Group work
- Individual and family work
- Volunteers

How the service is organised or its basic structure including whether it has any other offices in West Lothian

Throughout West Lothian, primarily social work referrals.

Barnardo's Lighthouse

Suite Two, Stanhope House, 12 Stanhope Place,
Edinburgh, EH12 5HH
01506 656325
Fax: 0131 346 7993
lighthouse@barnardos.org.uk

Summary of role of service and/or statutory duties (if any)

Lighthouse provide a specialist service for children and young people whose sexual behaviour is harmful to others. services include assessment, family work, consultation and training.

Referrals to the service in West Lothian are made through the Social Policy Resource Group.

Barnardo's Skylight

Skylight Project, 27 Ocean Drive, Edinburgh, EH6 6JL
0131 561 1464
skylight@barnardos.org.uk
www.barnardos.org.uk/skylight

Summary of role of service and/or statutory duties (if any)

Skylight offers individual therapeutic work, usually weekly, to young people aged up to 18 years old who have been sexually abused.

We use a range of direct work approaches to help young people express how they feel about themselves and how they can make sense of their experiences. All the staff have different approaches and training but all work in a non-directive way. The different approaches include Art Therapy, Child Psychotherapy, Counselling and Gestalt Therapy. We aim to match the child or young person with the worker whose approach will best suit their needs.

Skylight staff also deliver parent support work and training.

Barnardo's West Lothian Family Support Team

Melbourne House, 94 Mid Street, Bathgate, EH48 1QF
01506 656325
wlfst.project@barnardos.org.uk

Summary of role of service and/or statutory duties (if any)

To provide support services to families living in West Lothian who have a child(ren) with a significant learning disability aged from birth to school leaving age or 18.

Current Service Level Agreement with West Lothian Council to work in partnership to provide services to families living in West Lothian.

Services provided:

- To provide advice to families who have a child\young person with a disability
- Holiday playschemes for children and young people, one based in Beatlie Campus for children\young people with a significant disability and complex medical needs, the other based in Melbourne House for children\young people with learning disabilities.
- Provide Short Break Sitting Service
- Provide a Community Links Service
- Provide youth participation work for children\young people with disabilities and their siblings
- Provide groups for children\young people with disabilities
- Provide intensive family support in conjunction with the Disability Team Children and Families

How the service is organised or its basic structure including whether it has any other offices in West Lothian

Children's Services Manager (Isobel Denholm) based in Melbourne House and Assistant Director Children's Services (May Martindale) based in Barnardo's Glasgow Office.

Blackburn Family Centre

1a Whitehill Road, Blackburn, EH47 7HH
01506 633438
contact@familycentre.co.uk
www.familycentre.co.uk

Summary of role of service and/or statutory duties (if any)

Blackburn Family Centre aims to provide opportunities for children to socialise in a safe, educational environment. It Provides mutual support and self-help amongst parents, enabling both parent and child the chance of further education.

Our goals are to enable parents to address issues relating to improvements in family health and the local community. We ensure that families on low, fixed incomes have access to our resources.

Broxburn Family and Community Development Centre

1-3, Henderson Place, Broxburn, EH52 6EY
01506 857158
enquiry@broxburnfamilycentre.org
www.broxburnfamilycentre.org

Summary of role of service and/or statutory duties (if any)

The organisation provides a service which aims to meet the needs of the local community using a Community Development Approach. The organisation is based on the philosophy that education is the key to individual and community development. It has been in existence since 1989 and has evolved over the years to provide the present services which are wide ranging. The General Manager is Raymond Branton.

How the service is organised or its basic structure including whether it has any other offices in West Lothian

BFDC is an independent Voluntary Organisation recognised as a Charity by the Inland Revenue and is a Company Limited by Guarantee. It is run by a Management Board comprising local people. The organisation has a Service Level Agreement with West Lothian Council and receives funding from a variety of sources. The various services on offer are detailed as below. There are different locations but all use the same postal address.

Details of other offices/locations

Adult Education-classes run mornings and afternoons with the programme changing each term. Contact Simon Henderson.

A computer suite with internet access is available for classes and individual use. This is supported by laptop lending.

Information and advice is available on demand with an Adult Guidance Service being available 2 mornings per week.

Playwork training is available to staff working in Out of School Care Clubs throughout West Lothian. Training is SVQ in Playwork Levels 2 and 3.

Tel 01506 857581 Training Services Manager - Amanda Godsell

The Range Adventure Playground provides a variety of clubs and activities for children and young people aged 5-15 all year round.
Tel 01506 858455 Playleader - Robert Gillies

Early years training is available to staff working with pre-school children. Training is in Level 2 SVQ in Early Years Care and Education.

A crèche for pre-school children supports the adult programme. A Healthy Café is open 9.00 - 1.30 on weekdays.

An Out of School Care Service for Parents in work or education is available after school in term time and during school holidays.
Tel 01506 857158 Playleader - Nathan McGillivray

Carers of West Lothian

Strathbrock Partnership Centre, 189a West Main Street,
Broxburn EH52 5LH
01506 771750
office@carers-westlothian.com
www.carers-westlothian.com

Summary of role of service and/or statutory duties (if any)

Provide support, information, advice, and listening ear for carers of all ages across West Lothian. Produces an information pack giving information on support services, benefits and useful contact details for Carers in West Lothian. Also offers a directory of respite services in the area, detailing breaks available to carers in West Lothian. The organisation offers free training courses for carers. It facilitates a Carers Forum whose members lobby on behalf of carers locally and nationally. It publishes a quarterly newsletter.

How the service is organised or its basic structure including whether it has any other offices in West Lothian Carers Centre Manager (Mary-Denise McKernan) responsible to Management Committee. Centre Manager manages a core staff team based within the Carers Centre in Strathbrock. Also manages an Outreach Project based in Bangour Village Hospital, and a Young Carers Partnership Project based in the Youth Strategy team office in Bathgate.

Details of other offices/locations

Carers Outreach Project

Bangour Village Hospital, DECHMONT EH52 6LW
01506 811935
outreach@carers-westlothian.com

Young Carers Partnership Project

Youth Strategy Team
25 North Bridge Street, BATHGATE EH48 4PJ
01506 776999
wilma.Philpot@westlothian.gov.uk

Childcare Information Service

Education Services

Lindsay House, South Bridge Street, Bathgate, EH48 1TS
01506 776660
Chis@westlothian.gov.uk

Summary of role of service and/or statutory duties (if any)

To provide information and details on all types of registered childcare in the area. Further information is available from the above number and email address.

How the service is organised or its basic structure including whether it has any other offices in West Lothian

The service is managed by an Education Officer based in Lindsay House, who is responsible for the development of the service and the service is run by an Administrator.

Child Disability Service

**Lomond house
Beveridge Square, Livingston , EH54 6QF
01506 773789**

The Child Disability Service assesses the needs of children with disabilities and their families and offers a range of service provisions, including direct work with families and practical resources. In addition the service provides the same range of services as are offered by the other Children and Families Practice Teams.

Children and Families Social Policy

West Lothian Community Health and Care Partnership

Strathbrock Partnership Centre

189A West Main Street, Broxburn, EH52 5LH

01506 775547 Grahame Blair, Head of Social Policy

01506 775675 Bill Atkinson, Senior Manager, Children and Families

01506 771799 Jennifer Scott, Service Development Officer

01506 771798 Mairi Simpson, Service Development Officer

01506 771786 Dougie Short, Service Development Officer

01506 775549 (General Office)

firstname.lastname@westlothian.gov.uk

Summary of role of service and/or statutory duties (if any)

Provision of social work services, including practice teams, residential units, family and early years centres, fostering and adoption, youth strategy and support to young carers. Also covers Surestart, Disability Team, Intensive Support Team, Youth Justice and Support Team, and Through-Aftercare Team. Contributes to joint management arrangements for SW Drugs Team.

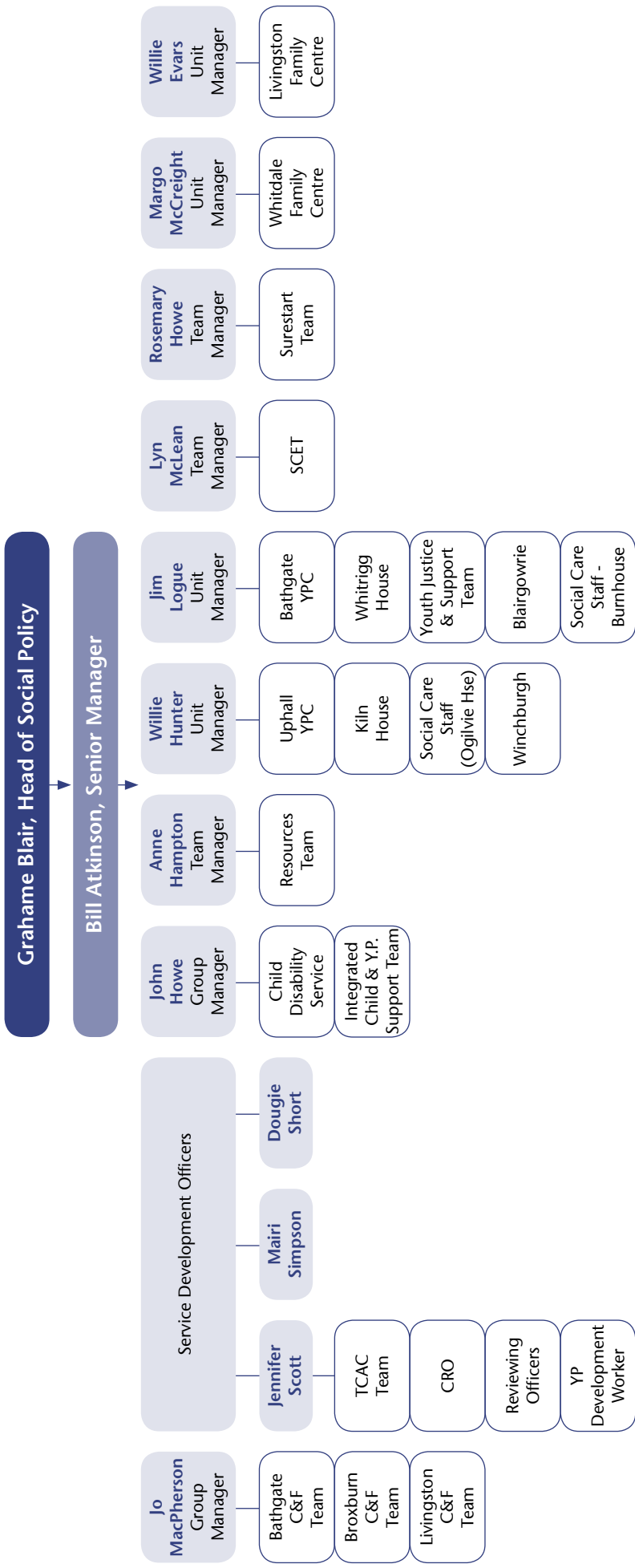
Statutory duties

- to 'advise, guide and assist' children and their families;
- to look after and accommodate children and young people, and provide throughcare and aftercare services;
- to provide foster care and residential accommodation; to protect children;
- to provide reports to the courts and to Scottish Children's Reporter's Administration and carry out duties for the Hearing system;
- to offer assessments of need for children with disability, carers of disabled children and those affected by disability of others including young carers.

Details of other offices/locations - see over

Sure-start - see separate entry

Management Structure Social Policy - Children's Services



Bathgate Young People's Centre

24 Race Road
BATHGATE
EH48 2AU
01506 775146

Children and Families Team

Bathgate Social Work Centre
69 Whitburn Road
BATHGATE
EH48 1HE
01506 776700

Children and Families Team

Livingston Social Work Centre
Cheviot House, Owen Square
LIVINGSTON
EH54 6PW
01506 777777

Children and Families Team

Strathbrock Partnership Centre
189a West Main Street
BROXBURN
EH52 5LH
01506 775666

Child Disability Service

Lomond House
Beveridge Square
LIVINGSTON
EH54 6QF
01506 773789

Children's Resource Team

Lomond House
Beveridge Square
LIVINGSTON
EH54 6QF
01506 775959

Children's Right's Officer

(Wendy Milne)
West Lothian House
Almondvale Boulevard
LIVINGSTON
07881 852984

Integrated Children and Young People Support Teams

25 North Bridge Street
BATHGATE
EH48 4PJ
01506 776929

Kiln House Satellite Unit

34 Kirkfield West
LIVINGSTON VILLAGE
EH54 7BE
01506 414807

Livingston Family Centre

5 Jackson Place
LIVINGSTON
EH54 6RH
01506 775775

Social Care Emergency Team

Suite 11
West Lothian House
Almondvale Boulevard
LIVINGSTON
EH54 6QG
01506 777401/402

Social Work Drugs Team

Lomond House
Beveridge Square
LIVINGSTON
EH54 6QF
01506 773681

Throughcare/Aftercare Team

01506 773720

Health and Homelessness Team

01506 773706
both Lammermuir House
LIVINGSTON

Uphall Young People's Centre

132 Forrest Walk
UPHALL
EH52 5PW
01506 775590

Whitdale Early Years Centre

Whitdale Family Centre
55b Whitdalehead Road
Whitburn
01501 742388

Whitrigg House Satellite Unit

Whitrigg House, Redmill
WHITBURN
EH 47 0RJ
01501 744183

Youth Justice Family Support

2a Shiel House
Shiel Walk
LIVINGSTON
EH54 5EH
01506 774085

Community Learning and Development Service

West Lothian Council, Education & Cultural Services
Lindsay House, Bathgate, West Lothian, EH48 1TS
01506 776104

Gerry Fitzpatrick:
Culture, Leisure and Community Services Manager
01506 776478

Gerry.fitzpatrick@westlothian.gov.uk

alastair.colquhoun@wled.org.uk
(Team Manager, Work with Young People)

ian.mcintosh@wled.org.uk
(Team Manager, Work with Adults and Communities)

Summary of role of service and/or statutory duties (if any)

The services work with young people is concerned with providing an educational process within safe settings based on experiential learning, participation in decision making and confidence building. Its aim is to provide a range of opportunities, which will aid the young people's personal and social development. The core activities are:

- Mainstream Clubs
- Holiday Activities
- Youth Strategy
- Issue Based
- International Work
- Youth Participation/Youth Information
- Young People and Community Safety
- Support to Volunteers

How the service is organised or its basic structure including whether it has any other offices in West Lothian

Culture, Leisure and Community Services
Two Team Managers based in area offices in the West and South. Functional responsibilities for Work with Young People. Adult Education and Building Community Capacity. One Training and Quality Assurance Officer.

Details of other offices/locations
See over

Contact List

Lindsay House, South Bridge Street, Bathgate EH48 1TS

Gerry Fitzpatrick

Culture, Leisure and
Community Services Manager
01506 776104

Teresa Simpson

Administrative Assistant
01506 776093
FAX 776095

SOUTH AREA OFFICE Almondbank Community Education Resource Centre

**Almondbank P.S. Livingston
EH54 5EJ**

Ian McIntosh

Team Manager - Work with
Adults and Communities
01506 777506

Frances Anderson

Community Education Worker
01506 777504

Marilyn Stimson

Administrative Assistant
01506 777505
FAX 777507

WEST AREA OFFICE Murrayfield Primary School

**Catherine Terrace, Blackburn
EH47 7DX**

Alastair Colquhoun

Team Manager - Work with
Young People
01506 776478

Pat Cole

Administrative Assistant
01506 776479

Annette Lambourne

Training and Quality Assurance
Officer

Nan Matthew

Snr C. E. Worker (Young Scot)

NORTH AREA OFFICE Strathbrock Partnership Centre

**189A West Main Street
Broxburn EH52 5LH**

Linda Sayers

Administrative Assistant
01506 771743

ADULT LEARNING CENTRE

**6-10 Glasgow Road,
Bathgate EH48 2AA**

Elaine Nisbet

ABE Organiser West Lothian
01506 776333

Lindsay Blackwood

ABE Tutor/Organiser
01506 776351

Alison Nicol

ABE Tutor/Organiser Open
Access Centre
01506 776352

Janice Davidson

Administrative Assistant
01506 776333

Fiona Stewart

P/T Clerical Assistant
Fax 776323
P/T ABE Tutor Organiser

Margaret Dickinson

P/T ABE Tutor Organiser

**ADDIEWELL COMMUNITY
EDUCATION WING**

**Church Street, Addiewell
EH55 8PG**

Claire Dougall
Community Education Worker
01501 762796

**ARMADALE COMMUNITY
EDUCATION CENTRE**

**North Street Armadale
EH48 3QB**

John McGhee
Snr Community Education
Worker
01501 678512

Colin Wilkinson
Community Education Worker
FAX 678511

Catherine Duffin
Clerical Assistant

**BATHGATE COMMUNITY
EDUCATION CENTRE**

**Marjoribanks Street,
Bathgate, EH48 1AH**

John Lockhart
Snr Community Education
Worker
01506 775151

Elaine Reekie
Community Education Worker
FAX 775155

Joyce Murphy
Clerical Assistant

**BLACKBURN COMMUNITY
EDUCATION CENTRE**

**Ashgrove, Blackburn
EH47 7LJ**

Jock Kerr
Snr Community Education
Worker
01506 653014

Catherine Roberts
Community Education Worker

Isobel Smith
Snr Clerical Assistant

**BRIDGEND COMMUNITY
EDUCATION CENTRE**

**Auldhill Road, Bridgend
EH49 6NZ**

Mike Scott
Snr Community Education
Worker
01506 834536
(Contact at Court Square)

**BROXBURN COMMUNITY
CENTRE STRATHBROCK
PARTNERSHIP**

**189A West Main Street,
Broxburn EH52 5LH**

Derek Catto
Snr Community Education
Worker

Margo Mitchell
Snr Community Education
Worker (job share)
01506 771735

Heather Thomson
Snr Community Education
Worker (job share)

Janet Wood
Community Education Worker
01506 771736

Ann Rogan
Community Education Worker

Moira Steven
P/T Clerical Assistant
01506 771733
Fax: 01506 771737

**CARMONDEAN
COMMUNITY CENTRE**

**Fells Rigg, Livingston
EH54 8AX**

Isobel Darge
P/T Clerical Assistant
01506 439568

**COURT SQUARE
(Team Office)**

2 Court Square, Linlithgow

Mike Scott
Snr Community Education
Worker
01506 775420

Carole Cameron
Community Education Worker
FAX 775424

CRAIGINN CENTRE

**Main Street, Blackridge
EH48 3SP**

John McGhee
Snr Community Education
Worker (Contact at Armadale)
01501 753227

Robina McGregor
P/T Clerical Assistant
FAX 753227

**CROFTHEAD FARM
COMMUNITY CENTRE**

**Templar Rise, Livingston
EH54 8DG**

Dennis Cairney
SCEW (Contact at Lanthorn)
01506 777707

**DECHMONT MEMORIAL
COMMUNITY EDUCATION
CENTRE**

**Main Street, Dechmont
EH52 6LJ**

Heather Thomson
Snr CEW (Contact at Broxburn
CEC)
01506 811022

**DEDRIDGE COMMUNITY
EDUCATION WING**

**Dedridge Primary School,
Dedridge East, Livingston
EH54 6JQ**

Denis Cairney
Snr CEW (Contact at Lanthorn
CEC)
01506 777707

Centre Tel. No 01506 412831

**EAST CALDER COMMUNITY
EDUCATION CENTRE**

**143 Main Street, East Calder,
EH53 0EP**

Isobel Johnson
Community Education Worker
01506 881557

Marlene Burford
P/T Clerical Assistant

**EAST WHITBURN
COMMUNITY EDUCATION
CENTRE**

**Hen-ness Road, East
Whitburn, EH47 8EX**

Albert Mancini
Snr Community Education
Worker
(Contact at Whitburn CEC)
01501 740938

**ELIBURN COMMUNITY
EDUCATION CENTRE**

**Garden Place, Eliburn,
Livingston**

June Close

Snr Community Education
Worker
01506 871278
(Contact at West Calder CEC)
Centre Tel. No 01506 415492

**FAULDHOUSE COMMUNITY
EDUCATION CENTRE**

**Lanrigg Road, Fauldhouse,
EH47 9JA**

Jim Mackay

Snr Community Education
Worker
01501 770552

Linda Bennett

P/T Clerical Assistant
FAX 770910

**FORESTBANK COMMUNITY
EDUCATION CENTRE**

**Forestbank, Ladywell,
Livingston, EH54 6DX**

June Close

SCEW (Contact at West
Calder)
01506 871278

Sandra McLaughlin

Receptionist/Attendant
01506 430035

Joan Murray

Receptionist/Attendant
01506 430035

**GREENRIGG COMMUNITY
EDUCATION CENTRE**

**Greenrigg Primary School
Polkemmet Road, Greenrigg,
Harthill**

Jim Mackay

Snr Community Education
Worker
01501 770552

**LANTHORN COMMUNITY
EDUCATION COMPLEX**

**Kenilworth Rise, Livingston,
EH54 6JL**

Denis Cairney

Snr Community Education
Worker
01506 777707

Alastair Dempster

Community Education Worker
FAX 417679

**LETHAM COMMUNITY
EDUCATION WING**

**Letham Primary School,
Forth Drive, Livingston
EH54 5LZ**

Dennis Cairney

(Contact at the Lanthorn)
01506 777707

Centre Tel. No. 01506 432013

**LIVINGSTON STATION
COMMUNITY EDUCATION
CENTRE**

**4 Main Street, Deans,
Livingston, EH54 8BE**

(Contact at Mosswood)

01506 414002

**LIVINGSTON STATION
COMMUNITY EDUCATION
YOUTH CENTRE**

**7 Main Street, Livingston,
EH54 8BE**

Helen Johnston

P/T Clerical Assistant
01506 411295

**LIVINGSTON VILLAGE
COMMUNITY EDUCATION
CENTRE**

**Kirkton North Road,
Livingston, EH54 7EQ**

June Close

**Snr CEW (Contact at West
Calder)
01506 871278**

Centre Tel. No. 01506 417343

**MID CALDER
INSTITUTE HALL**

**15 Market Street, Mid
Calder, EH53 0AT**

June Close

**Snr CEW (Contact at West
Calder)
01506 871278**

**Margaret McClafferty
P/T Clerical Assistant
01506 881246**

**MOSSWOOD COMMUNITY
EDUCATION CENTRE**

**Ferguson Way,
Knightsbridge, Livingston
EH54 8JF**

Mark Drysdale

Community Education Worker

**NEWYEARFIELD FARM
COMMUNITY EDUCATION
CENTRE**

**Hawkbrae, Ladywell West,
Livingston EH54 6TW**

June Close

**Snr CEW (Contact at West
Calder)
01506 871278**

Centre Tel. No. 01506 462458

**NEWTON COMMUNITY
EDUCATION CENTRE**

**26 Duddingston Crescent,
Newton EH52 6QG**

Mike Scott

**Snr CEW (Contact at
Springfield)
0131 331 3290**

**PHILPSTOUN
COMMUNITY
EDUCATION CENTRE**

**Main Street, Philpstoun
EH49 6RA**

Mike Scott

**Snr CEW (Contact at
Springfield)
01506 834360**

**RIVERSIDE COMMUNITY
EDUCATION WING**

**Riverside Primary School,
The Mall, Livingston
EH54 5EJ**

John Hoey

**Managed by Craigsfarm
Campus
01506 777691**

**SEAFIELD COMMUNITY
EDUCATION CENTRE**

**Main Street, Seafield
EH47 7AL**

Jock Kerr

**(Contact at Blackburn CEC)
01506 631791**

**Caroline Fraser
P/T Clerical**

**SPRINGFIELD COMMUNITY
EDUCATION WING**

**Springfield Primary School,
Springfield Road, Linlithgow,
EH49 7SN**

Mike Scott
Snr Community Education
Worker
01506 847455

Helen Kiczun
P/T Clerical Assistant
FAX 847455

**STONEYBURN
COMMUNITY
EDUCATION CENTRE**

**Main Street, Stoneyburn
EH47 8BY**

Jock Kerr
CEW (Contact at Blackburn)
01501 762323

Margaret Stevenson
P/T Clerical Assistant

**THE JAMES YOUNG HIGH
SCHOOL**

**Quentin Rise, Dedbridge
West, Livingston EH54 6NG**

Alyia Zaheed
Snr Community Education
Worker
01506 774472

Etta Kontou
P/T Clerical Assistant
FAX 497014

**TORONTO COMMUNITY
EDUCATION WING**

**Toronto Primary School,
Howden East, Livingston
EH54 6BN**

**Community Education
Worker**
01506 431465

Helen Johnston
P/T Clerical Assistant
Torphichen Community
Education Centre
Bowyett, Torphichen
EH48 4LZ

John Lockhart
Snr Community Education
Worker
(Contact at Bathgate C.C.)
01506 652383

Careen Hamilton
P/T Clerical Assistant

**UPHALL COMMUNITY
EDUCATION CENTRE**

**Strathbrock Place, Uphall
EH52 6BN**

Denise Doig
Centre Co-ordinator
01506 854451

**WEST CALDER
COMMUNITY EDUCATION
CENTRE**

**Dickson Street, West Calder
EH55 8DZ**

June Close
Snr Community Education
Worker
01506 871278

Dianne Paul
Clerical Assistant
Fax 871738

**WHITBURN COMMUNITY
EDUCATION CENTRE**

**Manse Road, Whitburn
EH47 8EZ**

Albert Mancini
Snr Community Education
Worker
01501 678888

Derek Bonnar
Community Education Worker

Karen Marshall
Clerical Assistant
FAX 678889

**WINCHBURGH
COMMUNITY
EDUCATION CENTRE**

**Craigton Place, Winchburgh
EH52 6RW**

Heather Thomson

Snr CEW (Contact at Broxburn
CEC)
01506 890348

**Community High
Schools**

**DEANS COMMUNITY
HIGH SCHOOL**

**Eastwood Park, Deans,
Livingston, EH54 8PS**

Anne Coia

Community Education Worker
01506 431972
FAX 497025

**INVERALMOND
COMMUNITY HIGH
SCHOOL**

**Willowbank, Ladywell East,
Livingston EH54 6HN**

Brendan Moohan

Snr Community Education
Worker
01506 438093

Couple Counselling Lothian

9A Dundas Street, Edinburgh, EH3 6QG

0131 556 1527

cclothian@btopenworld.com

Summary of role of service and/or statutory duties (if any)

Couple Counselling Lothian offers counselling and a range of other services for couples and individuals. As well as helping those who are thinking of staying together, separating or dealing with divorce, we see many people whose relationship had ended and who want to explore the issues around making new relationships.

How the service is organised or its basic structure including whether it has any other offices in West Lothian

Company limited by guarantee, of charitable status.

Manager: Deirdre Bett

(available Monday - Wednesday 9am to 5pm)

Practice Manager: Audrey Neill

(usually available Thursday & Friday)

Opening hours for telephone enquiries:

Monday - Thursday 9.00am to 9.00pm

Friday - 9.00am to 4.00pm

Saturday - 10.00am to 1.00pm

COZ

7 Gardners lane, Bathgate, West Lothian, EH48 1TP
01506 652436
Contact: APRIL ZOLIK

The Service

Opening in June 2003 The Chill Out Zone (known by the young people as Coz) is a Healthy Living Centre for young people aged 12-20 living in West Lothian. Based in Bathgate, its aim is to improve the health and well being of young people through the provision of a range of 'young people centred' health and development services, including: -

- Access to a multi-disciplinary staff team with backgrounds in Health, Education and Youth Work, offering information, advice and support with a range of health related issues.
- A Health Clinic, offering access to a range of confidential medical services concerning young people's physical, emotional, mental and sexual health.
- A drop in service with access to a range of information and advice from a range of specialist workers and planned activities.
- Access to a café providing light and healthy snacks and opportunities to develop skills in food preparation and cooking.
- A structure for young people's referral to specialist agencies.
- Free access to the Internet and a computer suite.
- A Community Resource offering a unique setting for promotions and launches.
- A confidential counselling service.

Coz is funded by:

- Children 1st
- West Lothian Council, Social Policy and Education Services
- West Lothian NHS Healthcare Trust

Co-ordinated by Children 1st, Coz services are developed and delivered in partnership with: -

- West Lothian Council, Community Education Services
- West Lothian NHS Healthcare Trust
- Voluntary Organisations
- Young People

Edinburgh & Lothian Council on Alcohol

6 Clifton Terrace, Edinburgh, EH12 5DR
Contact: Meichelle Walker
0131 337 8188
elca@btconnect.com

Summary of role of service and/or statutory duties (if any)

Provision of free specialist advice, information, counselling and support for anyone worried about their own or someone else's drinking. ELCA's services open to anyone 16 years and over.

Specific Tenancy Support and Supported Accommodation Service based in West Lothian for anyone who is homeless or at risk of becoming homeless due to their alcohol problem.

How the service is organised or its basic structure including whether it has any other offices in West Lothian

Managed by a Board of Directors (Management Committee)
Senior Management Team manages day to day responsibilities:
Meichelle Walker - Business Manager based in Edinburgh,
Eddie Dunlop - Manager for West Lothian Counselling Practice
Manager based in Edinburgh.

Details of other offices/locations

ELCA West Lothian Services, Suite P, Kirkton Business Centre
Kirk Lane, Livingston Village, Livingston, EH54 7AY
01506 414 247

Voluntary Counselling Service based in the Primary Care Health Centre in Bathgate.

Appointments made through our main office in Edinburgh
Tuesday afternoon service.

Education Development and Quality Assurance

Lindsay House, South Bridge Street, Bathgate, EH48 1TS
Heads of Service - 01506 776017 & 01506 776107
General Office - 01506 776130
Firstname.lastname@westlothian.gov.uk

Summary of role of service and/or statutory duties (if any)

- Curriculum Support & Development
- Quality Assurance of Schools including Review of Schools and Headteachers
- Recruitment of Headteachers & Other Senior Staff
Statutory Duties:
- To monitor the quality of Education Provision in West Lothian Schools and ensure implementation of The Schools (Scotland) Act 2000.

How the service is organised or its basic structure including whether it has any other offices in West Lothian

Heads of Service :

Moira Niven - 776017

Gordon Ford - 776130

Education Development Manager :

Pam Slater 776130

Bryan Paterson - 77638 (Additional Support Needs)

Education Officers :

Ann Durnian - 776134

Ronnie Boyd - 776136

Isobel Chalmers - 776105

Colin Hutcheon - 776357

Meg Morrison - 776137

Mary Rankine - 776355

Donald Stewart - 776023

John Tease - 776380

Phyllis Wood - 776026

Alison Watson - 776130

Margaret Cooper - 776114

Kay Ryan - 776112

Details of other offices/locations

See over

Education Establishments

Headquarters, Lindsay House, South Bridge Street, Bathgate,
EH48 1TS
01506 776000
Fax: 01506 776378
Mrs Kate Reid

NURSERY SCHOOLS

■ indicates Wraparound
Centre,

◆ indicates HT appointment in
progress

Bathgate West

01506 652004
63 Millburn Road, Bathgate,
EH48 2AF
Mrs Mvairi Lynch

Bonnytoun

01506 847454
141 Springfield Road,
Linlithgow, EH49 7SN
Fax: 01506 847454
Mrs Anne Matonti

Eastertoun

01501 732299
Manse Avenue, Armadale,
EH48 3HS
Mrs Alison Kennedy (acting)

Eliburn Nursery Class

01506 419484
Eliburn Family Centre,
5 Jackson Pl, Eliburn,
EH54 6RH
Mrs Aileen German

Glenvue ◆

01506 412333
Dedridge East, Livingston,
EH54 6JQ
Mrs Fiona Barber

Hopefield ■

01506 630944
Hopefield Road, Blackburn,
EH47 7HZ
Fax: 01506 630944
Mrs Irene McCrystal

Inveralmond

Early Years Centre ■

01506 441907
Willowbank, Ladywell,
Livingston, EH54 6HN
01506 438446
Mrs Aileen German

Kirkhill

01506 853118
Rashierig, Broxburn,
EH52 6AW
Mrs Norma A Watson

Knightsridge

Early Years Centre ■

01506 444970
Cameron Way, Knightsridge,
Livingston, EH54 8HE
Fax: 01506 436364
Ms Morag Stewart

Ladywell

01506 434542
Willowbank, Ladywell,
Livingston, EH54 6HW
Fax: 01506 439480
Mrs Marian Gibb

Polbeth

01506 872511
Polbeth Road, West Calder,
EH55 8SR
Fax: 01506 872511
Mrs Fiona Barber

Whitdale Early Years Centre ■

01501 744388
55b Whitdalehead Road,
Whitburn, EH47 8JU
Fax: 01501 749220
Ms Lynne Glen

Woodlands

01506 412608
Harburn Avenue, Deans,
Livingston, EH54 8NQ
Fax: 01506 412608
Mrs Mary McNamee

PRIMARY SCHOOLS

- indicates Nursery Class,
- ▼ indicates Education Support Resource
- indicates Wraparound Centre,
- ◆ indicates HT appointment in progress

Addiewell ●

01501 762794
Church Street, Addiewell,
West Calder, EH55 8PG
Fax: 01501 762737
Mrs Ruth Malcolm

Armadale ●

01501 730282
Academy Street, Armadale,
EH48 3JD
Fax: 01501 730301
Mrs Alison Philips

Balbardie ▼

01506 652155
Torphichen Street, Bathgate,
EH48 4HL
Fax: 01506 631276
Mrs Doreen McPhail

Bankton ● ■

01506 413001
Kenilworth Rise, Dedridge,
Livingston, EH54 6JL
Fax: 01506 418550
Mrs Marlyn Taylor

Bellsquarry ●

01506 410777
52 Calder Road, Bellsquarry,
Livingston, EH54 9AD
Fax: 01506 410777
Mrs Charlette Robertson

Blackburn

01506 653481
Riddochhill Road, Blackburn,
EH47 7HB
Fax: 01506 651329
Mrs Margaret Brown (Acting)
Miss Janet Wemyss

Blackridge ●

01501 751223
Main Street, Blackridge,
EH48 3RJ
Fax: 01501 753347
Mrs Susan Ralston

Boghall

01506 652609
Elizabeth Drive, Boghall,
Bathgate, EH48 1JB
Fax: 01506 650352
Mrs Ann Duncan

Bridgend ●

01506 834204
Auldhill Road, Bridgend,
EH49 6NZ
Fax: 01506 834813
Mrs Helen Rarity

Broxburn ● ▼ ■

01506 852018
School Lane, off West Main
Street, Broxburn, EH52 5RP
Fax: 01506 858554
Mr David Edwards

Carmondean ●

01506 432492
Knightsridge Road West,
Livingston, EH54 8PX
Fax: 01506 441795
Mrs Jan Lumsden

Cawburn Community

01506 432152
18 Uphall Station Road,
Pumpherston, EH53 0LP
Fax: 01506 437809
Mrs Shameem Ali

Croftmalloch ●

01501 740506
Via Raeburn Crescent,
Whitburn, EH47 8HQ
Fax: 01501 742007
Mrs Lynn Howitt

Deans ●

01506 411208
Deans South, Deans,
Livingston, EH54 8DB
Fax: 01506 419296
Mrs Lorraine Collins

Dechmont Infant ●

01506 811264
Main Street, Dechmont,
Broxburn, EH52 6LJ
Fax: 01506 811264
Catriona Grant (Acting)

Dedridge ▼
01506 412830
Dedridge East, Livingston,
EH54 6JQ
Fax: 01506 412800
Mrs Jean Hutchison

East Calder ●■
01506 880810
9 Langton Road, East Calder,
EH53 0BL
Fax: 01506 884570
Mrs Alice Anderson

Eastertoun
01501 730462
13 Manse Avenue, Armadale,
EH48 3HS
Fax: 01501 734225
Mr Gerald Cowan

Falla Hill ●■
01501 770210
Harthill Road, Fauldhouse,
EH47 9HS
Fax: 01501 772758
Mrs Anita Craig

Greenrigg ●
01501 751334
Polkemmet Road, Greenrigg,
Harthill, ML7 5RF
Fax: 01501 751334
Mrs Susan Mackenzie

Harrysmuir
01506 434501
Willowbank, Ladywell,
Livingston, EH54 6HN
Fax: 01506 442987
Ian Conaghan (acting)

Holy Family RC
01506 890208
Glendevon Park, Winchburgh,
EH52 6UE
Fax: 01506 890202
Mrs Theresa Edgar

Howden St Andrew's RC ●
01506 433114
Kingsport Avenue, Howden
East, Livingston, EH54 6BA
Fax: 01506 435954
Mrs Katrina McAuley

Kirkhill
01506 853821
Rashierig, Broxburn,
EH52 6AW
Fax: 01506 857926
Miss Ann Moir

Kirknewton ●
01506 881461
21 Station Road, Kirknewton,
EH27 8DD
Fax: 01506 885770
Mr Alan Millar

Knightsridge
01506 434012
Davidson Way, Knightsridge,
Livingston, EH54 8HG
Fax: 01506 441198
Mrs Elaine Merrilees

Letham ●
01506 432012
Forth Drive, Livingston,
EH54 5LZ
Fax: 01506 497091
Mrs Valerie Brodie

Linlithgow ●■
01506 842686
Preston Road, Linlithgow,
EH49 6HB
Fax: 01506 846298
Mr David Simpson

Linlithgow Bridge ●
01506 671428
East Mill Road, Linlithgow
Bridge, EH49 7PB
Fax: 01506 671418
Mrs Anne Corr

Livingston Village ●■
01506 429620
Kirkton North Road, Livingston
Village, EH54 7EQ
Fax: 01506 419408
Mrs Audrey Ford

Longridge ●
01501 770208
School Road, Longridge,
EH47 8AG
Fax: 01501 770208
Mrs Elizabeth Aitken

Low Port
01506 842060
Blackness Road, Linlithgow,
EH49 7HZ
Fax: 01506 671492
Mr Graeme Logan

Meldrum
01506 410440
Westwood Park, Deans,
Livingston, EH54 8NW
Fax: 01506 462099
Lilian Davidso

Mid Calder ●

01506 882092
Mid Calder, EH53 0RR
Fax: 01506 885814
Mr Alan Girdwood

Murrayfield ●

01506 653400
Catherine Terrace, Blackburn,
EH47 7DX
Fax: 01506 636119
Mrs Lorna Brockbank (Acting)

Our Lady of Lourdes RC

01506 653103
Hopefield Road, Blackburn,
EH47 7HZ
Fax: 01506 650817
Mr Matthew D Devine

Our Lady's RC ●

01501 762265
Stoneyburn Nursery Class
01501 763074
79 Main Street, Stoneyburn,
EH47 8BY
Fax: 01501 762497
Mrs Frances Burns

Parkhead ●

01506 871404
Harburn Road, West Calder,
EH55 8AH
Fax: 01506 873804
Mrs Rita Angus (acting)

Peel

01506 414892
Garden Place, Eliburn East,
Livingston, EH54 6RA
Fax: 01506 417886
Mrs Jan Short

Polkemmet ●

01501 740319
The Avenue, Whitburn,
EH47 0BX
Fax: 01501 744268
Mrs Doreen Steel

Riverside ●

01506 432248
Maree Walk, Livingston,
EH54 5BP
Fax: 01506 441539
Mrs Margaret Leighton

Seafield ●

01506 652916
Cousland Terrace, Seafield,
by Bathgate, EH47 7BL
Fax: 01506 652916
Mrs Marjorie W Morris

Springfield

01506 847452
141 Springfield Road,
Linlithgow, EH49 7SN
Fax: 01506 671834
Mrs Linda Mitchell

St Anthony's RC ●■

01501 731668
South Street, Armadale,
EH48 3EU
Fax: 01501 734349
Mr James McCrory

St Columba's RC ■

01506 653822
Nursery Class
01506 650536
Philip Avenue, Boghall,
Bathgate, EH48 1NQ
Fax: 01506 775102
Mrs Maureen Allan

St John Ogilvie RC

01506 412560
Harburn Avenue, Deans,
Livingston, EH54 8NQ
01506 464043
Mr Michael Marzella

St John The Baptist RC ●

01501 770232
Fax: 01501 770232
Mrs Anne Purdie
Nursery Class
01501 770782
Fax: 01501 770782
Mrs Anne Purdie
Lanrigg Avenue, Fauldhouse,
EH47 9JR

St Joseph's RC (Linlithgow)

01506 842578
Preston Road, Linlithgow,
EH49 6HB
Fax: 01506 843050
Mrs Kathleen McMahon

**St Joseph's RC
(Whitburn)** ●■

01501 740452
Gateside Road, Whitburn,
EH47 0NJ
Miss Mary Prior

St Mary's RC (Bathgate) ●
01506 652511
Nursery Class
01506 633106
Whitburn Road, Bathgate,
EH48 2RD
Fax: 01506 650338
Mrs Moira Claase

St Mary's RC (Polbeth)
01506 871520
10 Polbeth Road, Polbeth,
West Calder, EH55 8SR
Fax: 01506 873723
Mr Frank Boles

St Nicholas RC ●
01506 853509
Nursery Class
01506 858907
West Main Street, Broxburn,
EH52 5RH
Fax: 01506 852496
Mrs Karen Brown

St Ninian's RC ●
01506 414612
Douglas Rise, Dedridge,
Livingston, EH54 6JR
Fax: 01506 400048
Mrs Isabel McKendrick

St Paul's RC ●
01506 881665
Main Street, East Calder,
EH53 0ES
Fax: 01506 501666
Mr Gerald O'Brien

St Thomas's RC
01501 762794
Church Street, Addiewell,
EH55 8PG
Fax: 01501 762737
Ms Marie Moynagh

Stoneyburn
01501 762253
2 Main Street, Stoneyburn,
EH47 8BA
Fax: 01501 762089
Miss Alison Jack

Toronto ●
01506 431461
Howden East, Livingston,
EH54 6BN
Fax: 01506 432361
Mrs Pam Hamilton

Torphichen
01506 652246
The Loan, Torphichen,
EH48 4NF
Fax: 01506 639827
Mr Lewis Paul

Uphall ●
01506 852516
Crossgreen Drive, Uphall,
EH52 6DS
Fax: 01506 854991
Mrs Lesley Cameron

Westfield
01506 634019
Lomond View, Westfield,
EH48 3DE
Mrs Susan MacKenzie

Whitdale
01501 740548
13 Spruce Drive, Whitburn,
EH47 8JP
Fax: 01501 745829
Ms Maria Hybszer

Williamston ●■◆
01506 415311
Bankton Lane, Murieston,
Livingston, EH54 9DQ
Fax: 01506 462829
Mrs Arlene Black

Winchburgh ●
01506 890202
Glendevon Park, Winchburgh,
EH52 6UE
Fax: 01506 890202
Mrs Frances Rosevear

Windyknowe ●
01506 652083
Windyknowe Crescent,
Bathgate, EH48 2BT
Fax: 01506 634669
Mrs Rae Malcolm

Woodmuir
01501 770312
Woodmuir Road, Breich,
West Calder, EH55 8JN
Fax: 01501 770312
Mrs Susan Henry

SECONDARY SCHOOLS

▼ indicates Education Support Resource

Armadale Academy

01501 730601

West Main Street, Armadale,
EH48 3LY

Fax: 01501 735900

Mr Graham Johnstone

Bathgate Academy

01506 653725

Edinburgh Road, Bathgate,
EH48 1LF

Fax: 01506 652262

Mr Joseph Boyd

Broxburn Academy

01506 852521

Cardross Road, Broxburn,
EH52 6AG

Fax: 01506 856211

Mrs Anne McKay

Deans Community High

01506 497090

Eastwood Park, Livingston,
EH54 8PS

Fax: 01506 497025

Mrs Margaret Ross

Inveralmond Community High

01506 438093

Willowbank, Ladywell,
Livingston, EH54 6HN

Fax: 01506 442313

Mr William F Tevendale

Linlithgow Academy

01506 843211

Braehead Road, Linlithgow,
EH49 6EH

Fax: 01506 848082

Mr John Low

St Kentigern's RC Academy ▼

01506 656404

West Main Street, Blackburn,
EH47 7LX

Fax: 01506 651736

Mrs Kathleen Gibbons

St Margaret's RC Academy

01506 497104

Howden South Road,
Livingston, EH54 6AT

Fax: 01506 497103

Mr Patrick Sweeney

The James Young High ▼

01506 414244

Quentin Rise, Dedridge West,
Livingston, EH54 6NE

Fax: 01506 497014

Mr Christopher Horne

West Calder High

01506 871510

Limefield, Polbeth, West
Calder, EH55 8QN

Fax: 01506 871345

Mrs Elaine Cook

Whitburn Academy

01501 740675

Shanks Road, Whitburn,
EH47 0HL

Fax: 01501 742724

Mr W David Williamson

EDUCATION SUPPORT RESOURCE

▼ indicates Education Support Resource

● indicates Nursery Class,

◆ indicates HT appointment in progress

(also see under Primary & Secondary Schools for Special Classes)

Beattie School Campus ●

01506 777598

The Mall, Craigshill,
Livingston, EH54 5EJ

Fax: 01506 777594

Mrs Mary Currie

Burnhouse School ▼

01501 678100

The Avenue, Whitburn,
EH47 0BX

Fax: 01501 678108

Mrs Margaret Gibson

Cedarbank ▼

01506 442172

Cedarbank, Ladywell East,
Livingston, EH54 6DR

01506 436955

Mrs Denise McPhail

Ogilvie School Campus

01506 777489
Ogilvie Way, Knightsridge,
Livingston, EH54 8HL
Fax: 01506 777450
Mrs Sharon Johnston

Pinewood

01506 656374
86 Elm Grove, Blackburn,
Bathgate, EH47 7QX
Fax: 01506 650716
Mrs Mary O'Brien

Willowgrove House ◆

01506 434274
1/6 Willowgrove, Craigshill,
Livingston, EH54 5LU
Fax: 01506 432185
Mrs Margaret Gibson

OUTREACH SERVICES (EDUCATION)

Hearing Impaired Service

01506 418125
Deans PS, Deans South,
Deans, Livingston, EH54 8DB
Fax: 01506 419814
Carole Torrance

E.A.L. Service

01506 497090
Deans CHS, Eastwood Park,
Livingston, EH54 8PS
Fax: 01506 497025
Gail Hargreaves

Literacy Resource

01506 650384
Boghall Primary School,
Elizabeth Drive, Bathgate,
EH48 1JB
Jennifer Livingston
Karen-Ann MacAlpine

Technology Support

ICT Curriculum Development
Officer and SEN
01506 777424
Fax: 01506 777422

OUTREACH (HEALTH)

Autism Outreach

Primary: Mary O'Brien
01506 656374
Secondary: Denise McPhail
01506 442172

Language Resource

Primary: Denise McPhail
01506 436955

New to West Lothian (SN) Outreach Service

01506 777598
Occupational Therapy Needs
Occupational Therapy
Department
West Lothian NHS Trust
01506 419666

Occupational Therapy Needs

Occupational Therapy
Department
West Lothian NHS Trust
01506 419666

Partnership with other Agencies

West Lothian NHS Trust
01506 419666
West Lothian Social Work
Department
01506 777333

Physiotherapy Needs

Physiotherapy Department
West Lothian NHS Trust
01506 419666

Pre Five Home Teaching

Kay Ryan
01506 776112

Social Emotional Behavioural Needs (SEBN)

Primary: Sharon Johnston
01506 777450
Secondary: Margaret Gibson
01501 678108

Technology Support

ICT Curriculum Development
Officer and ALN
01506 777424
Fax: 01506 777422

PSYCHOLOGICAL SERVICE

Ogilvie House

01506 777462
Ogilvie Way, Knightsridge,
Livingston, EH54 8HL
Fax: 01506 777486
Doctor Laura Ann Currie

EDUCATION TRAINING & RESOURCE CENTRE

West Lothian Education Centre

01506 777451
Ogilvie House, Ogilvie Way,
Livingston, EH54 8UL
Fax: 01506 777452
Sheila Smith

EDUCATION WELFARE SERVICE

Education Welfare Office

01506 776117
Lindsay House, South Bridge
Street, Bathgate, EH48 1TS
Fax: 01506 776120
Mr John McDonald

ADULT LEARNING CENTRE

Adult Learning Centre

01506 776333
6-10 Glasgow Road, Bathgate,
EH48 2AA
Fax: 01506 776323
Mrs Elaine Nisbet
Mrs Lindsey Blackwood

ARTS UNIT

Arts Unit

01506 777585
Craigsfarm Campus, Maree
Walk, Livingston, EH54 5BP
Fax: 01506 777590
(vacancy)

Craigsfarm Community Development Project

01506 777691
Craigsfarm Campus, Maree
Walk, Livingston, EH54 5BP
Fax: 01506 777596
(vacancy)

Howden Park Centre

01506 433634
Howden, Livingston, EH54 6AE
Fax: 01506 434525

COMMUNITY EDUCATION SERVICE

Addiewell Community Wing

01501 762796
Church Street, Addiewell,
EH55 8PG
Claire Dougall

South Area Office

01506 777505
Almondbank PS, The Mall,
Livingston, EH54 5EJ
Fax: 01506 777507
Ian McIntosh

Armadale

01501 678511
North Street, Armadale,
EH48 3QB
Fax: 01501 678511
John McGhee

Bathgate

01506 775151
Marjoribanks Street, Bathgate,
EH48 1AH
Fax: 01506 775155
John Lockhart

Blackburn

01506 653014
The Centre, Ashgrove,
Blackburn, EH47 7LJ
John (Jock) Kerr

Bridgend

01506 834536
Auldhill Road, Bridgend,
EH49 6NZ
(contact Court Square)
Fax: 01506 775424
Mike Scott

Carmondean

01506 439568
Nether Dechmont Farm, Fells
Rigg, Livingston, EH54 8AX

Court Square

01506 775419
2 Court Square, Linlithgow,
EH49 6NB
Fax: 01506 775424
Mike Scott

Craig Inn

01501 753227
Main Street, Blackridge,
EH48 3SP
Fax: 01501 753227
John McGhee

Crofthead Farm

01506 775991
Templar Rise, Livingston,
EH54 8DG
Dennis Cairney

Deans Community High

01506 497090
Eastwood Park, Deans,
Livingston, EH54 8PS
Fax: 01506 497025
Beth Blue

Dechmont Memorial

01506 811022
71 Main Street, Dechmont,
EH52 6LJ
(contact Strathbrock
Partnership Centre)
Heather Thomson

Dedridge Community Wing

01506 412831
Dedridge PS, Dedridge East,
Livingston, EH54 6JQ
(contact Lanthorn CEC)

East Calder

01506 881557
133 Main Street, East Calder,
EH53 0EP
Isobel Johnson

East Whitburn

01501 740938
Hen Nest Road, East Whitburn,
EH47 8EX
(contact Whitburn CEC)
Albert Mancini

Eliburn

01506 415492
Peel PS, Garden Place, Eliburn,
Livingston, EH54 6RA
(contact West Calder CEC)
Fax: 01506 871738
June Close

Fauldhouse

01501 770552
Lanrigg Road, Fauldhouse,
EH47 9JA
Fax: 01501 770910
James Mackay

Forestbank

01506 430035
Forestbank, Ladywell,
Livingston, EH54 6DX
(Contact West Calder CEC)
June Close

Greenrigg

01501 770552
Greenrigg PS, Polkemmet
Road, Greenrigg, ML7 5RF
(contact Fauldhouse CEC)
Fax: 01501 770910
Mr James Mackay

Inveralmond Community High

01506 439631
Willowbank, Ladywell East,
Livingston, EH54 6HW
Brendan Moohan

Knightsridge Adventure Project

01506 433307
Knightsridge East, Livingston,
EH54 8R
Tracy Waddell

Lanthorn

01506 777707
Kenilworth Rise, Dedridge,
Livingston, EH54 6JL
Fax: 01506 417679
Dennis Cairney

Letham Youth Wing

01506 432013
Letham Primary School, Forth
Drive, Livingston,
EH54 5LZ
(contact Lanthorn CEC)
Dennis Cairney

Livingston Station Youth Centre

01506 411295
7 Main Street, Deans,
Livingston, EH54 8BE

Livingston Station

01506 414002
4 Main Street, Deans,
Livingston, EH54 8BE
(contact Livingston Station
Youth Centre)

Livingston Village

01506 417343
Kirkton North Road, Livingston
Village, EH54 7EQ
Sheila Oxley (caretaker)

Mid Calder

01506 881246
Institute Hall, 15 Market
Street, Mid Calder, EH53 0AL
June Close

Mosswood

01506 437761
85 Ferguson Way,
Knightsridge, Livingston,
EH54 8JF
Tracy Waddell

Newton

0131 3313290
26 Duddingston Crescent,
Newton, EH52 6QG

Newyearfield Farm

01506 462458
Hawkbrae, Ladywell West,
Livingston, EH54 6TW
(contact Almondbank)
Fax: 01506 777507

North Area Office

01506 771743
Strathbrock Partnership
Centre,
189a West Main Street,
Broxburn, EH52 5LH
Fax: 01506 771731
Derek Catto

Philpstoun

01506 834360
Main Street, Philpstoun,
EH49 6RA
(contact Court Square)
Mike Scott

Polbeth Community Centre

01506 871034
Polbeth Road, Polbeth,
EH55 8SR
(contact West Calder)
Fax: 01506 871738

Pumpherstoun Institute

01506 431546
Uphall Station Road,
Pumpherstoun, EH53 0LY
(contact Almondbank)
Fax: 01506 777507

Riverside

01506 777690
Riverside PS, The Mall,
Livingston, EH54 5EJ
(contact Craigsfarm
Community Development
Project)
Fax: 01506 777596

Seafield

01506 631791
Main Street, Seafield,
EH47 7AL
(contact Blackburn CEC)

Springfield

01506 847455
Springfield PS, 141 Springfield
Road, Linlithgow, EH49 7SN
Fax: 01506 847455
Mike Scott

Stoneyburn

01501 762323
75 Main Street, Stoneyburn,
EH47 7BY
Vacancy

**Strathbrock Partnership
Centre**

01506 771733
Community Education,
189a West Main Street,
Broxburn, EH52 5LH
Fax: 01506 771737
Margo Mitchell

The James Young High

01506 774471
Quentin Rise, Dedridge West,
Livingston, EH54 6NE
Fax: 01506 497014
Alyia Zaheed

Toronto

01506 431465
Toronto PS, Toronto Avenue,
Howden East, Livingston,
EH54 6NB

Torphichen

01506 652383
Bowyett, Torphichen,
EH48 4LZ
(contact Bathgate CEC)

Uphall

01506 854451
Strathbrock Place, Uphall,
EH52 6BN
Margo Mitchell

West Area Office

01506 776478
Murrayfield PS, Rowan Street,
Blackburn, EH47 7DX
Fax: 01506 776480
Alastair Colquhoun

West Calder

01506 871278
Dickson Street, West Calder,
EH55 8EG
Fax: 01506 871738
June Close

Whitburn

01501 743034
Manse Road, Whitburn,
EH47 8EZ
Fax: 01501 742220
Albert Mancini

Winchburgh

01506 890348
Craigton Place, Winchburgh,
EH52 6RW
Margo Mitchell

OUTDOOR EDUCATION

Low Port Centre
01506 775390
Blackness Road, Linlithgow,
EH49 7HZ
Fax: 01506 775399
Mr George Thomson

SPORTS UNIT

Sports Unit
01506 776295
Balbardie Park, Bathgate,
EH48 4LA
Fax: 01506 776186
Mr Charlie Raeburn

SPORTS CENTRES

Bathgate Sports Centre

01506 776790
Balbardie Park of Peace,
Torphichen Road, Bathgate,
EH48 4LA
Fax: 01506 776784
William Key

Broxburn Sports Centre

01506 775690
Church Street, Broxburn,
EH52 2EL
Fax: 01506 775693
Eric Stafford

Craigswood Sports Centre

01506 775870
Craigswood, Livingston,
EH54 5ER
Fax: 01506 775873
William Key

East Calder Sports Centre

01506 883340
28 Raw Holdings, East Calder,
EH53 0JN
Fax: 01506 881753
William Key

Linlithgow Leisure Centre

01506 775440
McGinley Way, Linlithgow,
EH49 6SQ
Fax: 01506 775458
Lynda Binnie

SWIMMING POOLS

Armadale Swimming Pool

01501 678520
North Street, Armadale,
EH48 3QB
Fax: 01501 678523
John Duff

Bathgate Swimming Pool

01506 774670
78 Mid Street, Bathgate,
EH48 1QD
Fax: 01506 774674
William Key

Broxburn Swimming Pool

01506 775680
104 East Main Street,
Broxburn, EH52 5EQ
Fax: 01506 775685
Eric Stafford

Bubbles Leisure Pool

01506 777870
Almondvale Boulevard,
Livingston, EH54 6QT
Fax: 01506 777891
Kerry McMaster

Linlithgow Leisure Centre

01506 775440
McGinley Way, Linlithgow,
EH49 6SQ
Fax: 01506 775458
Lynda Binnie

Whitburn Swimming Pool

01501 678070
77 West Main Street,
Whitburn, EH47 0QD
Fax: 01501 678076
John Duff

HALLS**Bellsquarry Community Hall**

Main Street, Bellsquarry
Contact: Mrs Piercy
01506 410830

Breich Village Hall

Main Street, Breich
Contact: Evelyn Russell
01501 770727

Burgh Halls, Linlithgow

01506 842572
The Cross, High Street,
Linlithgow
Contact: Letting Section
01506 776008

Chalmers Hall, Linlithgow

01506 842744
Falkirk Road, Linlithgow Bridge
Contact: Letting Section
01506 776008

Fauldhouse Library Pavilion

Main Street, Fauldhouse
Contact: Letting Section
01506 776008

Harrysmuir Bowling Pavilion

01506 442182
Willowbank, Livingston
Contact: Joe McLelland
07743 021230

Kirknewton Village Hall

Main Street, Kirknewton
Contact: Mrs Ewing
01506 884454

Longridge Village Hall

01501 770339
School Lane, Longridge
Contact: Letting Section
01506 776008

Polbeth Village Hall

01506 871034
Main Street, Polbeth
Contact: West Calder CC
01506 871278

Pumpherstons Institute

01506 431546
Uphall Station Road,
Pumpherstons
Contact: Letting Section
01506 776008

Uphall Station Institute

01506 432854
Marrfield Terrace, Uphall
Station
Contact: Letting Section
01506 776008

OAP SHELTERS**Blackridge**

West Main Street, Blackridge
Not bookable

Westrigg

Park Road, Westrigg
Contact: Letting Section
01506 776008

LIBRARIES

Headquarters

01506 776336
Connolly House, Hopefield
Road, Blackburn, EH47 7HZ
Fax: 01506 776345
Jeanette Castle

School Libraries

01506 776334
Based at Connolly House
Helen Scott

Almondbank

01506 777500
Craigshill Shopping Mall,
Craigshill, Livingston, EH54 5EJ
Helen Dobie

Armadale

01501 678400
West Main Street, Armadale,
EH48 3JB
Elizabeth Hunter

Bathgate

01506 776400
Hopetoun Street, Bathgate,
EH48 4PD
Anne McIntosh/Margaret
Armstrong (Job Share)

Blackburn

01506 776500
Shopping Mall, Blackburn,
EH47 7LJ
Fiona Aitken

Blackridge

01501 752396
Craig Inn Centre, Blackridge,
EH48 3SP
Moira McCabe

Broxburn

01506 775600
West Main Street, Broxburn,
EH52 5RH
Fax: 01506 856211
Gillian Gillespie

Carmondean

01506 777602
Carmondean Centre,
Livingston, EH54 8PT
Stephen Harris

East Calder

01506 772621
Main Street, East Calder,
EH53 0EJ
Gillian Downie

Fauldhouse

01501 772721
Lanrigg Road, Fauldhouse,
EH47 9JD
Marilyn James

Lanthorn

01506 777700
Kenilworth Rise, Dedridge,
Livingston, EH54 6NY
Gillian Downie

Linlithgow

01506 775490
The Vennel, Linlithgow,
EH49 7EX
Kay Ali

Pumpherston

01506 435837
Pumpherston Primary School,
18 Uphall Station Road,
Pumpherston, EH53 0LP
Ruth Forsythe

West Calder

01506 772421
Main Street, West Calder,
EH55 8BQ
Gillian Gillespie

Whitburn

01501 678050
Union Road, Whitburn,
EH47 0AR
Sandra Valaitis (acting)

Public Reference Library

01506 427601
Street Building, West Lothian
College, Almondvale Crescent,
Livingston, EH54 7EP
Fax: 01506 409980
Linda Hartley

EO ROLES AND RESPONSIBILITIES - AUGUST 2005

Education Officer	Cluster(s)	Curricular Areas
Alison Watson	James Young HS Bankton PS Dedridge PS Williamston PS Bellsquarry PS Nurseries Bonnytoun NS Glenvue/Polbeth NS Hopefield NS Woodlands NS Knightsridge EYC Kirkhill NS Bathgate EYC (when ready)	Childcare Parent Partners
Isobel Chalmers	Whitburn Academy Croftmalloch PS Falla Hill PS Greenrigg PS Longridge PS Polkemmet PS Whitdale PS Stoneyburn PS	Assessment Performance Management Curriculum Flexibility
Ann Durnian	West Calder High School Addiewell PS East Calder PS Mid Calder PS Parkhead PS Woodmuir PS Kirknewton PS Nurseries Bathgate West NS Eastertoun NS Inveralmond EYC (Eliburn) Whitdale EYC Ladywell NS	3-8 Curriculum Early Intervention English
Ronnie Boyd	Armadale Academy Armadale PS Blackridge PS Eastertoun PS Westfield PS Windyknowe PS	Probationer Induction and Support Student Placement
Meg Morrison	Inveralmond Community HS Harrysmuir PS Peel PS Livingston Village PS Letham PS Riverside PS Toronto PS	Performance Management Modern Languages Science

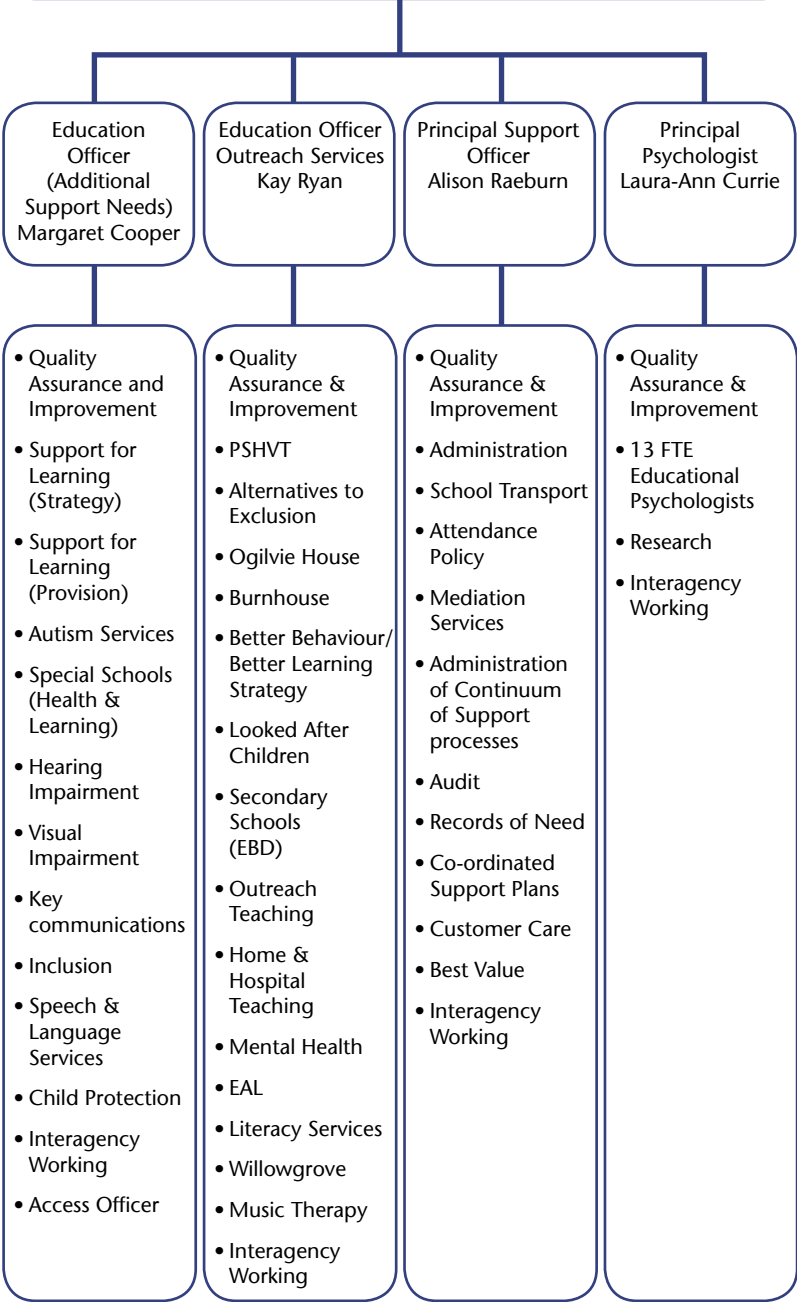
Education Officer	Cluster(s)	Curricular Areas
John Tease	Linlithgow Academy Linlithgow PS Linlithgow Bridge PS Low Port PS Springfield PS Bridgend PS Winchburgh PS	Performance Management Maths ICT Business Education
Mary Rankine	Broxburn Academy Broxburn PS Dechmont Infant Kirkhill PS Uphall PS Uphall Station Infant Pumpherstons PS Deans cluster Primaries Carmondean PS Deans PS Knightsridge PS Meldrum PS	Performance Management Curriculum for Excellence Learning and Teaching Development Officers McCrone
Donald Stewart	St Margaret Academy Holy Family PS St Nicholas PS Howden St Andrews PS St John Ogilvie PS St Ninian's PS St Paul's PS Deans Community High School	CDT RME Curriculum for Excellence Learning and Teaching Development Officers
Colin Hutcheon	Bathgate Academy Balbardie P Boghall PS Torphichen PS Blackburn PS Murrayfield PS Seafield PS	McCrone Expressive Arts
Phyllis Wood	St Kentigern's Academy St Anthony's PS St Columba's PS Our Lady of Lourdes PS Our Lady's PS St John The Baptist PS St Joseph's PS, Linlithgow St Joseph's PS, Whitburn St Mary's PS, Bathgate St Mary's PS, Polbeth St Thomas' PS	Citizenship Health Social Subjects Equality Issues

Education Officer	Cluster(s)	Areas of Responsibility
Margaret Cooper	Beattie School Campus Cedarbank School Pinewood School Education Support Resource: <ul style="list-style-type: none"> • James Young High School • Dedridge • Balbardie • Broxburn Primary • St Kent's 	Support for Learning QA and Improvement Autism Services Hearing Impairment Visual Impairment Child Protection Speech and Language Services Interagency Working Inclusion Pre 5 Special Provision
Kay Ryan	Ogilvie School Campus Burnhouse School	Outreach Services QA and Improvement PSHVT Alternatives to Exclusion
Susan Cowan (Pre-School Development Officer)	Pre-School Partner Establishments	
Ann Doyle	Curriculum Support Team Member – Early Years/Early Intervention	

PUPIL SUPPORT MANAGERS

School	Name
Armadale Academy.....	Carol McDonald
Bathgate Academy.....	Ellis McKay
Broxburn Academy.....	Linda Brough
Deans Community High School.....	Anne Craig
Inveralmond Community High School.....	Catriona Scott
Linlithgow Academy.....	Jack Laurie
St Kentigern's Academy.....	David Glencourse
St Margaret's Academy.....	Winifred McCall
The James Young High School.....	Gillian Spence (Acting) Elaine Bain is on Maternity Leave
West Calder High School.....	Lisa Lorimer
Whitburn Academy.....	Paula Allison

**Education Development Manager
(Additional Support Needs)
Bryan Paterson**



Education Support Services

Lindsay House, South Bridge Street, Bathgate, EH48 1TS
01506 776110 / 01506 776394
bryan.paterson@westlothian.gov.uk
Bryan Paterson, Education Development Manager, Lindsay House

Summary of role of service and/or statutory duties (if any) Statutory duties include:

- to secure adequate and efficient educational provision for children and young people with additional support needs (including those with additional educational needs, a disability, high achievers and those for whom English is an additional language).
- to ensure that education provided is directed to the development of the personality, talents and mental and physical abilities of the child to their fullest potential and a presumption that education will be provided in a mainstream school.

Education support services provides a range of additional support to children and young people with additional learning needs, including:

- services for visually and/or hearing impaired pupils
- psychological service
- English as an additional language
- hospital and home teaching services
- support for learning teachers
- specialist provision for pupils with learning difficulties, social, emotional and behavioural needs or severe and complex needs

Through partnership with other agencies, there is also provision of:

- speech and language therapy
- occupational therapy
- physiotherapy
- social work

How the service is organised or its basic structure including whether it has any other offices in West Lothian

See service structure opposite

Details of other offices/locations

See subsequent page

Family Mediation Lothian

207 West Main Street, Whitburn, West Lothian, EH47 0LP
01501 749780
Fax: 01501 745094
fmwestlothian@btconnect.com

Summary of role of service and/or statutory duties (if any)

Family Mediation Lothian aims to prevent damage resulting from family break-up, principally emotional damage to children and young people, by:

- providing information and advice to separating parents
- working with the courts and solicitors to make mediation a ready alternative
- bringing together parents with a trained mediator to achieve agreement on future parenting
- providing centres where parents can enjoy contact with their children
- providing 'surviving the break-up' groups for recently separated people
- providing individual and group support for children

How the service is organised or its basic structure including whether it has any other offices in West Lothian

Service covers Edinburgh City, East, Mid and West Lothian.
Director: Carol Barrett
West Lothian Area Manager: Eleanor Higgins

Details of other offices/locations

37 George Street
Edinburgh
EH2 2HN
Tel: 0131 226 4507
Fax: 0131 220 4324
lothian@familymediation.freeserve.co.uk

Family Protection Unit

F Division, Lothian and Borders Police, Bathgate Police Station,
South Bridge Street, Bathgate, EH48 1TL
01506 652323 or via
Divisional Headquarters 01506 431200
Firstname.lastname@lbp.pnn.police.uk

Summary of role of service and/or statutory duties (if any)

The unit is responsible for the investigation of all allegations relating to sexual offences, reported within West Lothian, reporting of youth offending and child protection issues to the Scottish Children's Reporter's Administration, liaison with victims of Domestic Abuse and appropriate support agencies, monitoring of sex offenders and investigation of reported missing persons.

Statutory duties

- investigation of allegations relating to sexual offences;
- report findings, following investigation to the Procurator Fiscal and the Scottish Children's Reporter's Administration, where appropriate;
- liaise with and provide reports to the Scottish Children's Reporter's Administration, regarding youth offending and child protection issues;

Domestic Abuse Liaison Officer: Anne Robertson
01506 656023

Deals with victims of Domestic Abuse to give them advice and support about criminal proceedings and other agencies that can assist.

Sex Offender Assessment Officers: Murdo Stewart, Frances Faulds
01506 656023

Deals with the perpetrators and monitors them through the registration period, and makes risk assessments of their conduct in the community.

How the service is organised or its basic structure including whether it has any other offices in West Lothian

Detective Inspector Willie Guild has line management responsibility for all detective officers and liaison officers based within the Family Protection Unit. Overall responsibility for the FPU lies with Detective Chief Inspector Keith Anderson.

Details of all police stations within West Lothian are contained below. Whilst FPU officers are based at Bathgate, contact can be made via any of the police station referred to below.

Details of other offices/locations

Livingston Police Station

Divisional Headquarters
Almondvale South
Livingston EH54 6PX
Tel: 01506 431200

Armadale Police Station

69/71 West Main Street,
Armadale EH48 3PZ
Tel: 01501 730219

Whitburn Police Station

West Main Street, Whitburn
EH47 1LR
Tel: 01501 740222

Broxburn Police Station

West Main Street, Broxburn
EH52 5LJ
Tel: 01506 852121

Linlithgow Police Station

High Street, Linlithgow
EH49 7EQ
Tel: 01506 843235

West Calder Police Station

9 East End, West Calder
EH55 8RF
Tel: 01506 871218

First Steps Playgroup

Beatlie School Campus, The Mall, Craigshill,
Livingston, EH54 5EJ
01506 777883

Summary of role of service and/or statutory duties (if any)

First Steps operate a playgroup for pre-school children with special needs in the Beatlie Campus, Craigshill, Livingston. It has registered charitable status.

Hearth Project

C/O Blackburn Homeless Unit, 151 Rowan Drive,
Blackburn, EH47 7NZ
01506 653360
hearth@fsu.org.uk

Summary of role of service and/or statutory duties (if any)

The Hearth Project provides intensive support to children and families affected by parental drug and/or alcohol use in West Lothian including:

- Support to parents with parenting issues and on developing a safer lifestyle
- Encouraging and supporting parents to engage with drug and alcohol services
- Individual and group support to children and adults
- Support to access other services for children and families

Referrals can be made by a parent or professional.

Homeaid West Lothian

12 Gideon Street, Bathgaten, EH48 4HD
01506 652230
Contact: Jackie Agnew
firstname@homeaid.freeserve.co.uk

Summary of role of service and/or statutory duties (if any)

Recycle donated furniture for homeless and low income families and individuals at low cost

How the service is organised or its basic structure including whether it has any other offices in West Lothian

Co-ordinator responsible to management committee

Home-Start West Lothian

37a McLeod Street, Broxburn, EH52 5BN
01506 854529
homestartwl@lineone.net

Summary of role of service and/or statutory duties (if any)

Home-Start offers a unique service. We recruit and train volunteers who are usually parents themselves to visit families at home who have at least one child under 5 and offer them informal, friendly and confidential support. Home-Start schemes are rooted in the communities they serve. They are managed locally but supported by the national organisation. This offers direction, training, information and guidance to schemes and ensures consistent and quality support for parents and children wherever they are. Home-Start West Lothian volunteer befrienders offer support to families throughout the whole of west Lothian.

How the service is organised or its basic structure including whether it has any other offices in West Lothian

Home-Start West Lothian is a voluntary organisation and registered charity. Each Home-Start scheme has a Management Committee who employ staff. We have one full-time Senior Co-ordinator, one part-time Co-ordinator and one Administration Assistant. We recruit and train volunteers to support families.

Staff Team : 1 Senior Co-ordinator (37hours)
1 Co-ordinator (32 hours)
1 Admin Assistant (25 hours)

The scheme's core funding is from West Lothian Council via the Sure Start budget. Funding for the pt-time Co-ordinator's post comes from the Big Lottery via the Community Fund.

Integrated Children and Young People Support Teams

John Howe, Group Manager, School Services,
25 North Bridge Street, BATHGATE
01506 776929
john.howe@westlothian.gov.uk

Team Leaders:

Lisa MacFarlane South Locality

Kay Pearson West Locality

Ian Colgan North Locality

01506 776929

Three teams, consisting of Youth Strategy Workers, Education Welfare Officers and Family Support Workers, have been established to offer a pupil and family support service. The teams will be based in school clusters and will work, in collaboration with appropriate partners, to help ensure that children and young people with difficulties are prevented, as much as possible, from finding themselves the subject of referrals to statutory services, through early intervention and the use of a range of innovative methods.

Lothian Autistic Society

66A Newhaven Road, Edinburgh, EH6 5QB
0131 554 9362
office@lothianautistic.com

Summary of role of service and/or statutory duties (if any)

Providing advice and support to families affected by autistic spectrum disorder. Services operating in West Lothian area include flexible respite scheme and play scheme in the Easter and summer holidays.

How the service is organised or its basic structure including whether it has any other offices in West Lothian

Board of directors. Management committee.
Development manager responsible for managing all aspects of society business on a day-to-day basis.

NCH Scotland

Gilmerton Road Project, 408 Gilmerton Road, Edinburgh,
EH17 7JH
0131 672 1702

Summary of role of service and/or statutory duties (if any)

Provision of the following services in partnership with social work and health services within Lothian:

- short breaks
- outreach
- assessment
- emergency provision
- psychological services (for families affected by learning disabilities)

Takes referrals from West Lothian.

How the service is organised or its basic structure including whether it has any other offices in West Lothian

NCH has no offices in West Lothian. NCH is a national organisation with around 500 projects, covering a range of family-related services. Gilmerton Road is one of these. NCH also has overseas projects.

Details of other offices/locations

NCH Scotland (Head Office for Scotland)
17 Newton Place
Glasgow
G3 7PY
0141 332 4041

NHS Lothian - West Lothian Community Health & Care Partnership Children's Services

West Lothian Community Health & Care Partnership
Address of main service/HQ, Strathbrock Partnership Centre,
189a West Main Street Broxburn, West Lothian, EH52 5LH
01506 771841
Doreen.trainor@wlt.scot.nhs.uk

Summary of role of service and/or statutory duties (if any)

Provision of integrated Children's and Young Peoples Services between Primary Care, Community and acute/secondary care services for the population of West Lothian

How the service is organised or its basic structure including whether it has any other offices in West Lothian

Children's and Young People's Services are provided within Health Centres, Schools, other community settings, Children's Ward and out patient departments in St. John's Hospital and include the following services

- Acute Paediatrics
- Child Adolescent Mental Health Services
- Child Development Centre
- Child and Family Psychiatry
- Community Child Health
- Community Children's Nurses
- GPs and Primary Health Care Teams
- Health Visiting Services
- Obstetrics
- Psychology
- School Health – Main Stream and Special Schools
- Special Care Baby Unit

Allied Health Professionals – Physiotherapists, Occupational Therapists, Speech Therapists, Podiatrists and Dieticians provide services to children within the hospital, community, school and home setting.

Health - Responsibilities

- Health and Wellbeing for all Children and Young People within West Lothian
- Promotion of Health and Prevention of Illness
- Provision of health care services to children, young people and their families
 - Primary, community and
 - Secondary care
- Child Health Surveillance Programme (pre school and school)
- Immunisation Programmes (pre school and school)

- School Health Service
- Children with Disability
- Child Protection
- Looked After and Accommodated Children

Within health services we aim to enhance the provision of seamless Integrated Services across the acute/community interface. There is a strong history of effective interagency working with other Statutory and Voluntary Agencies which will be strengthened by the development of West Lothian Community Health & Care Partnership.

Details of other offices/locations

Dr. Helen Hammond
Dr. D. Theodosiou
 Consultation Paediatricians
Dr. J. Ritchie, Senior
 Clinical Medical Officer
 Community Child Health
 Department
 St. John's Hospital
 01506 419666 ext: 2783

Doreen Trainor
 Chief Nurse
 Strathbrock Partnership Centre
 Broxburn
 01506 771481

Margaret Somerville
 Office Manager
 Community Child Health
 Department
 St. John's Hospital
 01506 419666 ext: 2783

Community Children's Nurses
 St. John's Hospital
 01506 419666 ext: 2018

Susan McGill
Pam McLean
 Paediatric Nurse Specialists
 St. John's Hospital
 01506 419666 ext:2553

Louise Jarman
 Co-ordinator
 Child Development Centre
 Beatlie Campus, Craigshill,
 Livingston
 01506 777584

Sister Lynn Haddow
 Children's Ward
 St. John's Hospital
 01506 419666 ext: 3115

Dr. Susie Hume
 Consultant Psychiatrist
 Child and Family Psychiatry
 St. John's Hospital
 01506 419666 ext: 2734

Terri Griffiths
 Head of Department
 Clinical Psychology
 St. John's Hospital
 01506 419666 ext: 4530

GP Practices Within West Lothian

CENTRAL LOCALITY

Ash Grove Medical Practice

Health Centre, Ash Grove,
Blackburn EH47 7LL
01506 652956

Deans and Eliburn Medical Practice

Health Centre, Carmondean,
Livingston EH54 8PY
01506 432270

Carmondean Medical Group

Health Centre
Carmondean, Livingston
EH54 8PY
01506 430031

Dr. Shah

Health Centre, Carmondean,
Livingston EH54 8PY
01506 440050

Dedridge Medical Practice

Health Centre, Nigel Rise,
Dedridge, Livingston
EH54 6QQ
01506 414586

Howden Medical Practice

Health Centre, Howden,
Livingston EH56 6TP
01506 423800

West Calder Medical Practice

Health Centre, Stewart Street,
West Calder EH55 8HB
01506 871359

Murieston Health Centre

Health Centre, Hamilton
Square, Livingston
01506 461464

WEST LOCALITY

Whitburn Medical Practice

Health Centre, Weavers Lane,
Whitburn EH47 OQU
01501 740297

Dr. Ritchie and Dr. Jones

Health Centre, Blackfaulds
Place, Fauldhouse EH47 9AS
01501 770282

Dr. Milne and Partners

Health Centre, Main Street,
Stoneyburn EH47 8BY
01501 762515

Newlands Medical Practice

Primary Care Centre,
Whitburn Road, Bathgate
EH48 2SS
01506 655155

Simpson Medical Practice

Primary Care Centre,
Whitburn Road, Bathgate
EH48 2SS
01506 654444

Kingsgate Medical Practice

Primary Care Centre,
Whitburn Road, Bathgate
EH48 2SS
01506 653134

Armadale Group Practice

18 North Street, Armadale
EH48 3QB
01501 730432

Blackridge Health Centre

Health Centre, Fleming Place,
Blackridge EH48 3SS
01501 751238

GP Practices Within West Lothian

EAST LOCALITY

Dr. Wood and Partners

Strathbrock Partnership Centre
189a West Main Street,
Broxburn EH52 5LH
01506 771800

Dr. Gunn and Partners

Strathbrock Partnership Centre
189a West Main Street,
Broxburn EH52 5LH
01506 771771

Dr. Ferguson and Partners

Strathbrock Partnership Centre
189a West Main Street,
Broxburn EH52 5LH
01506 771700

Winchburgh GP Practice

Health Centre, Niddry Road,
Winchburgh EH52 6RX
01506 890737

Linlithgow Medical Group Practice

Health Centre, High Street,
Linlithgow EH49 7ER
01506 670027

Linlithgow Family Practice

Health Centre, High Street,
Linlithgow EH49 7ER
01506 670036

Dr. Handley and Partners

Health Centre, The Mall,
Craigshill, Livingston
EH54 5DY
01506 432621

East Calder Medical Practice

147 Main Street, East Calder
EH53 OEW
01506 882882

Health Centres with Attached Health Visitors - West Lothian

CENTRAL LOCALITY

Health Centre

Ash Grove, Blackburn
01506 654965
Alison Baxter
Carol Denholm

Health Centre

Carmondean, Livingston
01506 836675
Bernadette McGuigan
Emma Beattie
Gail Connell
Nancy Yuille

Health Centre

Nigel Rise, Dedridge,
Livingston
01506 414586
Marion Brown
Linda Wilson
Lynne Cooper
Liz Marks

Health Centre

Howden, Livingston
01506 423800
Norma Martin
Irene Meldrum
Lesley Hunt

Health Centre

Stewart Street, West Calder
01506 871359
Janette Anderson

Clinic

Polbeth Road, Polbeth
01506 871274
Liz Lavelle

Health Centre

Murieston, Livingston
01506 463347
Brenda Jones-Murty

WEST LOCALITY

Health Centre

Weavers Lane, Whitburn
01501 740719
Jean Lugton
Alison Shaw
Adrienne Campbell

Health Centre

Blackfaulds Place, Fauldhouse
01501 772038
George Hamill
Karen McKeown

Health Centre

Main Street, Stoneyburn
01501 762515
Joan Watson

Primary Care Centre

Whitburn Road, Bathgate
01506 630771/2
Shona Russell
Louise Boyd
Sharon Houston

Clinic

North Street, Armadale
01501 730339
Sharon Ferguson
Gerry Connor

Health Centre

Fleming Place, Blackridge
01501 654965
Alison Scholes

Whitdale Family Centre

55 Whitdalehead Road,
Whitburn
01501 744380
Carol Middleton

Health Centres with Attached Health Visitors - West Lothian

EAST LOCALITY

Strathbrock Partnership Centre

189a West Main Street, Broxburn
01506 771830
Maggie McNeil
Mags Woodward
Jill Douglas
Heather Smith

Health Centre

Niddry Road, Winchburgh
01506 891078
Aileen Morrison
Margaret Morris

Health Centre

High Street, Linlithgow
01506 670044
George Scott
Joyce Dishington
Judy Rankin

Health Centre

Main Street, East Calder
01506 880582
Elspeth Neilson
Johanna McGavigan
Morag Park

Health Centre

The Mall, Craigshill, Livingston
01506 432621
Joyce Mowbray
Lesley Milligan
Trudi Starritt
Helen Boxall

Other health professionals providing services to children and young people within the above health centres include

- Community Midwives
- Community Psychiatric Nurses
- Allied Health Professionals - Physiotherapists, Speech and Language Therapists, Dietician, Podiatrists
- Treatment Room Nurses
- District Nurses
- Practice Nurses

School Nurses within West Lothian

School Nurse Base

Howden Health Centre
01506 423800

Inveralmond Community High School

Vicki Jones
01506 423800

Armadale Academy

Morag Blair
01506 423800

West Calder High School

Marie Watt
01506 423800

Whitburn Academy

Marilyn Woodhead
01506 423800

Broxburn Academy

Jackie Baggott
01506 423800

St. Margaret's Academy

Jackie Baggott
01506 423800

James Young High School

Lorraine McLean
01506 423800

Linlithgow Academy

Moyra Rodgers
01506 423800

Bathgate Academy

Dorothy Fleming
01506 423800

Deans Community High School

Beth Fleming
01506 423800

St. Kentigern's Academy

Marie MacNamee
01506 423800

Specialist Provision

Nurses in Special Schools are based in Beattie Campus and Pinewood School. Isobel Graham is the Lead Nurse for Children with Disability.
07709 400 758

Beattie Campus

Craigshill, Livingston
Isobel Graham
Frances Turnbull
Janet Cormack
01506 777598

Pinewood School

Elm Grove, Blackburn
Isobel Graham
Theresa Kirk
01506 656374

Cedarbank School

Cedarbank, Livingston
Isobel Graham
01506 442172

Open Door Accommodation Project

7/12 Adelaide, Street, Craigshill, Livingston, EH54 5HG

01506 430221

Fax: 01506 431185

herona@blueyonder.co.uk

Summary of role of service and/or statutory duties (if any)

To provide emergency homeless accommodation, support and advice to Young People age 16-21 years in our 10-bedded hostel.

To Provide practical, emotional, social and intellectual support to young people living in our outreach flats.

To provide support to enable young people to maintain their own tenancies.

How the service is organised or its basic structure including whether it has any other offices in West Lothian

Project Manager (Richard Amos), responsible to voluntary Management Committee.

Outreach Operational Manager (Susan Harcourt) responsible to Project Manager.

Depute Hostel Manager (Audrey Heron) responsible to Project Manager.

Details of other offices/locations

Open Door Outreach Service

Unit U Kirk Lane

Livingston Village

01506 203237

Open Door Tenancy Support

Unit U Kirk Lane

Livingston Village

01506 204767

Save the Children

2nd floor, Haymarket House, 8 Clifton Terrace, Edinburgh,
EH12 5DR
0131 527 8223/2
j.sperber@savethechildren.org.uk

Summary of role of service and/or statutory duties (if any)

In addition to its direct work with children and young people, Save the Children in Scotland offers a range of training sessions for voluntary agencies, local councils schools (teachers) and university courses for education and social work. These courses are described in a series of Training Folders available from Save the Children.

The courses are:

1. Children's Rights,
2. Children's Rights in a wider context of Human Rights,
3. Promoting Participation in Children's Services and
4. Training on re:action Consultation Toolkit.

In addition to this, new courses include a one-day generic training course in equality and a training based on the publication 'Spice it up', which offers tools and techniques for youth participation and consultation.

How the service is organised or its basic structure including whether it has any other offices in West Lothian

Save the Children does not do any long term work with children and young people in West Lothian. However, training courses are available to staff in West Lothian.

Scottish Adoption Association

2 Commercial Street, Edinburgh, EH6 6JA
0131 553 5060

Summary of role of service and/or statutory duties (if any)

A registered adoption agency which provides information, counselling and support to anyone who has adopted, has been adopted or is interested in adoption. Services include:

- recruiting, preparing and supporting adoptive parents and permanent foster families
- confidential counselling, information, advice and support to adopted adults
- information, counselling and support to anyone considering adoption for their child or expected baby and to birth parents of children adopted

How the service is organised or its basic structure including whether it has any other offices in West Lothian

Services are generally available to people living in the Lothians (or within 60 miles of Edinburgh for prospective adoptive parents). There are no offices in West Lothian.

Scottish Children's Reporter Administration

Edinburgh Road, Bathgate, West Lothian, EH48 1BA
01506 632741

Summary of role of service and/or statutory duties (if any)

Children and young people can be referred to the Reporter by anyone who has concerns for the child's safety, welfare or behaviour. The Reporter has a legal duty to consider the referral and decide if a children's hearing is required. The children's hearing will decide if a legal order (a supervision requirement) should be made to assist the child.

How the service is organised or its basic structure including whether it has any other offices in West Lothian

The Authority Reporter manages the service for West Lothian, which is part of the East Region of the national administration. Individual Reporters in West Lothian deal with referrals arising in a particular geographical area.

Signpost

Beatlie School Campus, Craigshill, Livingston, EH54 5EJ

Helpline: 01506 431 123

Office: 01506 431133

Email: enquiries@signpost-online.co.uk

Website: www.signpost-online.co.uk

Signpost is a voluntary organisation (registered charity SCV32398) which offers information and support to families of young people (birth to 18) who have disabilities or other special needs. We offer a helpline, drop-in office, regular newsletter and website, as well as individually tailored information for enquirers. Open to families, carers and professionals who support them. A 'one-stop shop' so that people do not have to phone around many different agencies. Staff discuss and identify the needs of the whole family then put them in touch with the most appropriate support. Every staff member is also a parent of a child with special needs so families appreciate our understanding of their situation. Informal emotional support is also offered.

Office hours:

Monday - Thursday 9.30am to 2.30pm

Friday 9.00am - 12.00pm

We have no other offices in West Lothian.

Sure Start

Unit G, Kirkton Business Centre, Kirk Lane, Livingston,
EH54 7AY
01506 775836
surestart@westlothian.gov.uk
www.wlcsurestart.org.uk

Summary of role of service and/or statutory duties (if any)

The aim of Sure Start is to give very young children (from pre-birth to 3 years) the best possible start in life by working closely with parents and health, voluntary and local authority services to provide a cohesive service to parent and child in a non-stigmatising way.

Services offered are:

- local groups which aim to improve parent-child interaction through play and provide advice and support to parents in furthering children's development
- group work for those at risk of social exclusion, through e.g. mental or physical ill health, domestic violence, drug or alcohol misuse, minority groups and looked after children
- individual support to parents to enable them to develop parenting skills and to access other support services
- career development advice for parents

How the service is organised or its basic structure including whether it has any other offices in West Lothian

Sure Start has one office in Livingston but holds groups and supports parents throughout West Lothian.

Victim Support West Lothian

15-19 Jarvey Street, Bathgate, EH48 4EZ
Tel & Fax: 01506 635050
vswl@btconnect.com

Summary of role of service and/or statutory duties (if any)

Victim Support is a voluntary organisation providing a free, confidential and independent service to all victims of reported and unreported crime and those affected by crime.

- Emotional support
- Practical help
- Information on the Criminal Justice System
- Support at court
- Free assistance with Criminal Injuries Compensation claims and
- Information on other sources of help.

Our services can be provided by means of a home visit, telephone contact or an office appointment.

How the service is organised or its basic structure including whether it has any other offices in West Lothian

Victim Support West Lothian is a voluntary organisation run by an Area Management Committee. It is part of a National Organisation, affiliated to Victim Support Scotland.

The area office is staffed by a part-time Area Co-ordinator plus a part-time Administrator, the core hours are Monday - Friday 10.00am to 2.00pm and the frontline services are provided by a trained team of dedicated volunteers.

Voluntary Action West Lothian

19 Jarvey Street, Bathgate, EH48 4EZ
01506 634115
vawl@btinternet.com

Summary of role of service and/or statutory duties (if any)

Voluntary Action exists to provide support to local voluntary organisations. Some of the main services include:

- Funding Advice
- Support in the development of funding applications
- Advice on legal structures
- Information on Charity law
- Voluntary Sector Forum
- Newsletter
- Information Events
- Good Practice Guides
- Access to ICT
- Training Information
- New Deal
- Business Plan Development
- Organisational support.

How the service is organised or its basic structure, including whether it has any other offices in West Lothian

The service is based in Bathgate with outreach throughout West Lothian.

Voluntary Sector Overview

In Scotland there are an estimated 50,000 voluntary organisations providing a wide range of services to a diverse client group and has an estimated income of over £2.62 billion annually which equates to 1.2 % of the annual turnover of the Scottish Economy.

There has been increasing recognition of the strategic value of the voluntary sector not only as providers of services but also as a force for economic growth and social inclusion. The commitment of the Scottish Parliament to the value of the sector was underlined in February 2004 by the launch of the Scottish Compact which underpins the relationship between the Scottish Executive and the sector.

The West Lothian Voluntary Sector provides as diverse and vibrant a picture as the national perspective. There is in-excess of 1,800 voluntary organisations in operation in West Lothian ranging from the small volunteer run group to large organisations delivering services which contribute both directly and indirectly to the local and national policy framework. Collectively the local sector has an income of in excess of £30 million per annum.

The sector locally has a key role to play in the following:

- Providing the first point of contact
- Service provider
- Referrer to mainstream services
- Key partner

The West Lothian organisations provide a diverse range of services to all parts of society including:

- Anti-poverty initiatives
- Children's Services
- Training
- Community Economic Development
- Counselling
- Environmental Initiatives
- ICT Training
- Mediation
- Regeneration
- Provision of information and advice
- Services for older people
- Services for people with disabilities
- Specialist support
- Training for Work
- Promotion of Social Inclusion

The sector has a key role to play in cross-sectoral working and cross-agency collaboration to respond to the complex needs of society, which often cannot be compartmentalised.

West Lothian Community Health and Care Partnership (CHCP)

**Strathbrock Partnership Centre, 189a West Main Street,
Broxburn, West Lothian, EH52 5LH
01506 775535**

West Lothian Community Health and Care Partnership was established in April 2005 to bring together a wide range of Health and Council services including children's services, community care, personal care, residential care, health improvement/promotion, continuing care, mental health, general practitioners, dentists, opticians, pharmacists, district nursing, learning and physical disabilities and health visiting.

Summary of role of service

The vision of the West Lothian CHCP is to develop an organisation that will further enhance and develop the delivery of integrated health and social care services to the people of West Lothian. The CHCP will operate for an initial two years and will be subject to independent evaluation and formal agreement to continue within this period.

Structure

The work of the CHCP is governed by the Partnership Board which is made up of

Bob Anderson (Chair)

NHS Lothian

Jane Houston

NHS Lothian (Partnership Representative)

Lesley Jamie

NHS Lothian

Dr Mike Boyle

NHS Lothian

Councillor Graeme Morrice

West Lothian Council

Councillor Bruce Ferrie

West Lothian Council

Councillor John McGinty

West Lothian Council

Councillor Peter Johnston

West Lothian Council

The CHCP Management Team is made up of

David Kelly

Director

Grahame Blair

Head of Council Services

Jim Forrest

Head of Health Services (interim)

Dr Cindy Brook

Clinical Director

West Lothian Drug & Alcohol Service

43 Adelaide Street, Craigshill, Livingston, EH54 5HQ
01506 430225
enquiries@wldas.org

Education Service

Delivers sessions on drugs, alcohol, tobacco and sexual health in secondary schools throughout West Lothian. Tobacco education is also delivered in all primary schools.

Sessions are also available to community groups, youth clubs and uniformed organisations.

Back on Track

This service works with young people who are experiencing problems due to their own or a significant other's misuse of drugs or alcohol.

Cloud Nine

Assists and supports vulnerable young people up to 21 who want to reduce or stop smoking.

Packit In

This tobacco education and smoking cessation project works with young people, parents and staff who wish to address smoking issues in Inveralmond High School and Whitburn Academy and their feeder primaries.

Healthy Respect

Runs five drop-in sexual health clinics for young people in Deans and The James Young Community High Schools, Whitburn Academy, Boghall Health Clinic and Strathbrock Partnership. Access to contraception and pregnancy testing are available.

Wise Up on Drugs

Offers drug education to parents in their workplace.

All these services operate within Child Protection Guidelines.

For further information on the wide range of WLDAS services, contact Margot Ferguson, General Manager on 01506 430225 or 01506 446640.

West Lothian Women's Aid

92 Ivanhoe Rise, Dedridge, Livingston, West Lothian, EH54 6HZ
01506 413721
wlwa@wlwalivingston.fsnet.co.uk

Summary of role of service and/or statutory duties (if any)

To provide refuge, support and advice for women and any accompanying children fleeing from domestic abuse.

There are two designated children's workers who support children and young people one of which is involved in outreach through referral. This is tailored to the child's needs and can be one-to-one, group work, outings and follow-on support.

How the service is organised or its basic structure including whether it has any other offices in West Lothian

West Lothian Women's Aid operates as a collective and as such does not have a hierarchical structure. We have only one office in West Lothian, two refuges and four cluster houses and the staffing is comprised of one finance worker, one administration worker, two children's workers, one cluster house worker and three refuge workers.

West Lothian Youth Action Project

33 Aller Place, Eliburn, Livingston, West Lothian, EH54 6RF
01506 461588
wlyapoffice@yahoo.co.uk
wylaphelen@yahoo.co.uk

Summary of role of service and/or statutory duties (if any)

The project provides information support and advice services to young people aged 10-21 throughout West Lothian. We particularly focus on young people that do not engage with other youth services. The project is a voluntary charitable organisation

Services provided include:-

- 1) A detached youth service
- 2) Early Intervention work (offending)
- 3) A befriending scheme
- 4) Youth Forum work
- 5) School work (challenging behaviour workshops, self esteem and confidence building etc)
- 6) Internet Café facilities
- 7) C. Card Service
- 8) Drug and Alcohol Peer Education Programme
- 9) Youth Consultation
- 10) Active Steps (activity programme for those at risk of offending)

How the service is organised or its basic structure including whether it has any other offices in West Lothian

Project Director – Helen Davis
The Project Director manages a team of twenty staff + and volunteers. The organisation is steered by a management committee including representatives from Social Work (Youth Crime), Lothian and Borders Police, Community Education, Local Councillors, The Royal Bank of Scotland, Ecumenical Church and other independent members.

Details of other offices/locations

Yacc.com - Internet Café
Located on the corner of Almondell Road and Strathbrock Place, Broxburn
open Wednesday evening 6.00 to 9.00pm and Friday 2.00pm until 5.00pm.

Wee Croft Bents/Stoneyburn Monday 6.00 to 9pm, Friday 2.00 to 5pm and Saturday 5.00 to 8.00pm

The Detached youth work is carried out using a specially converted vehicle, this is located at specific venues throughout the region, for details of these please contact the project on 01506 461588.

Who Cares? Scotland

1st Floor, Oswald Chambers, Glasgow, G1 4QR
0141 226 4441
enquiries@whocaresscotland.org
www.whocaresscotland.org

Summary of role of service and/or statutory duties (if any)

To provide advocacy, support and information for young people in care, foster care and residential schools. To act as a voice for young people and campaign for change.

How the service is organised or its basic structure including whether it has any other offices in West Lothian

Director - Deirdre Watson.
Please see attached staffing structure

Details of other offices/locations

West Lothian Who Cares?

worker:
Ray MacLean
07787 560471

Manager: Janice Ringrose

07793 447251

Dundee sub-office

11 Castle Street, Dundee DD1 3AA
01382 202888
Fax: 01382 202889

Kilmarnock sub-office

28-30 Grange Street, Kilmarnock KA1 2DD
01563 573015
Fax: 01563 573122

Edinburgh sub-office

c/o BAAF
40 Shandwick Place, Edinburgh
0131 226 7403
Fax: 0131 226 3778

Wraparound Care

Education Services, Lindsay House, South Bridge Street,
Bathgate, EH48 1TS
01506 776127
rebecca.wilson@westlothian.gov.uk

Summary of role of service and/or statutory duties (if any)

To provide childcare alongside pre-school education, for three and four year olds, and for children in Primary 1-3, where space permits. Wraparound care is available in eleven locations. Further information is available from the Childcare Information Service on 01506 776660 or at www.childcarelink.gov.uk or email chis@westlothian.gov.uk

How the service is organised or its basic structure including whether it has any other offices in West Lothian

The service is managed by the Headteachers of the schools concerned, with an Education Officer based in Lindsay House, being responsible for policy development.

Details of other offices/locations

See list of educational establishments under Education Development and Quality Assurance.

YWCA Livingston

31 Canberra Street, Craigshill, Livingston, EH54 5HA
01506 432911
Fax: 01506 439708
livingstonywca@care4free.net

Summary of role of service and/or statutory duties (if any)

YWCA Livingston aims to enable women, particularly those under 30, to develop their full potential and participate at all levels of society.

It does this by providing education, information and advice to girls and women in the Livingston area.

On Offer:

- Drop-in service
- Information and advice on issues such as housing, health, educational opportunities and career development
- Summer playscheme for children aged 5 - 12 years
- Young mothers group
- Young women's group for 16 - 19 year olds
- Girls clubs
- Volunteering opportunities

