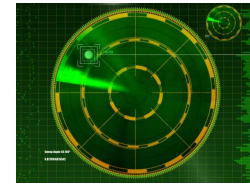


RADAR



(Respiratory And Diabetes
Awareness Resource)

Aiming to keep Primary Care staff informed of Respiratory and Diabetes developments.

LTC Education Programme for Nursing Home Staff

This RCN accredited course is offered to support the professional development of registered nurses working in care homes to effectively manage Long Term Conditions (LTC). The 2 day course is delivered by CHCP LTC professionals and covers a variety of LTC/Assessment Tools.

Next course: 10TH and 24th September 2010

West Lothian CHCP Website

A specific "Respiratory Services" section has been developed in order to communicate relevant information to staff, patients and the public:

- ❖ Patient Information Guide
- ❖ Publications
- ❖ Local Services
- ❖ Patient/Carer Support Group
- ❖ Pulmonary Rehabilitation Service
- ❖ WL Respiratory Care Partnership

Diabetes section "in development"

COPD Self Management Classes

A pilot education programme has been developed in partnership with WLCHCP, WLC and CHSS looking at the early stages of COPD. The aim is to find out if early education improves the quality of life for people with COPD.

The classes will run throughout June 2010 and are open to patients/family members registered at practices in

- ❖ Livingston
- ❖ Fauldhouse, Stoneyburn and Whitburn

DOLI (Diabetes Ownership for Lifestyle Improvement)

- ✓ Encourage at risk patients from diagnosis
- ✓ Fast track for exercise

For more information contact Anne Munro
01506 651917

FUTURE TRAINING EVENTS

Long Term Conditions

03/06/10 LTC "Nursing Forum"

Conference Room, Bathgate PCC

01/09/10 LTC "Nursing/G.P Forum"

Further details to follow

Useful Web Addresses

Lothian Respiratory (COPD) MCN - www.lothianrespiratorymcn.scot.nhs.uk

NHS Lothian Diabetes - www.lotdiabnet.scot.nhs.uk

Chest, Heart & Stroke, Scotland - www.chss.org.uk

British Lung Foundation - www.lunguk.org

Asthma UK - www.Asthma.org.uk

Diabetes UK - www.diabetes.org.uk

Diabetes - www.mydiabetesmyway.scot.nhs.uk

West Lothian Community Health and Care Partnership - www.westlothian.chcp.org.uk

For further information contact:

Shena Brown, Respiratory Care Facilitator, Laura Hunter, Project Co-ordinator, Anne Munro, Diabetes Facilitator, Bathgate Primary Care, Tel: 651916