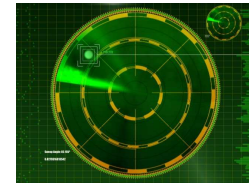


RADAR



(Respiratory And Diabetes
Awareness Resource)

Aiming to keep Primary Care staff informed of Respiratory and Diabetes developments.

RE-DESIGNED PULMONARY REHABILITATION (PR)

Following on from the NHS Lothian PR audit 2009, the West Lothian PR programme has been re-designed. The main change is the programme will now be delivered over a 6 week period.

Revised paperwork has been circulated electronically:

- PR referral pathway
- Referral forms
- A guide for patients

DESMOND

- ✓ We have a new West Lothian DESMOND co-ordinator. Please send new referrals to Ray Brown, Strathbrock Partnership. (referral form attached with this update - also available on intranet (<http://intranet.lothian.scot.nhs.uk/NHSLothian/Healthcare/A-Z/Diabetes>) and via SCI referrals)
- ✓ Patients who have attended a DESMOND session are encouraged to bring their self management plans with them when in for review – do ask to see them and encourage continued use.
- ✓ Lothian wide training took place in January. Following mentoring and ongoing training, we will have a team of 9 educators in WL. This will allow us to continue to expand without waiting times.

DESMOND (Lay Study)

Final education session takes place 22 February 2011. Final data collection from practices still ongoing. A big thank you to all the practices who participated in what has been a very successful project.

LOTHIAN RESPIRATORY MCN GUIDELINES

(available to download from
www.lothianrespiratorymcn.scot.nhs.uk)

- Lothian COPD Guidelines
- Lothian COPD Guidelines – treatment charts
- Lothian Guideline for Domiciliary Oxygen Therapy Service for COPD
- Lothian Guideline for Diagnosis and Treatment of Adult Bronchiectasis
- Lothian Palliative Care in Advanced Lung Disease

FUTURE TRAINING EVENTS

3.3.11 Long Term Conditions Nursing Forum – Conference Room, Bathgate Primary Care, 1-4pm